

# Continuation of Land Management Plan Built Upon Success of Previous 10 Years



Kevin Thuesen, Ph.D.

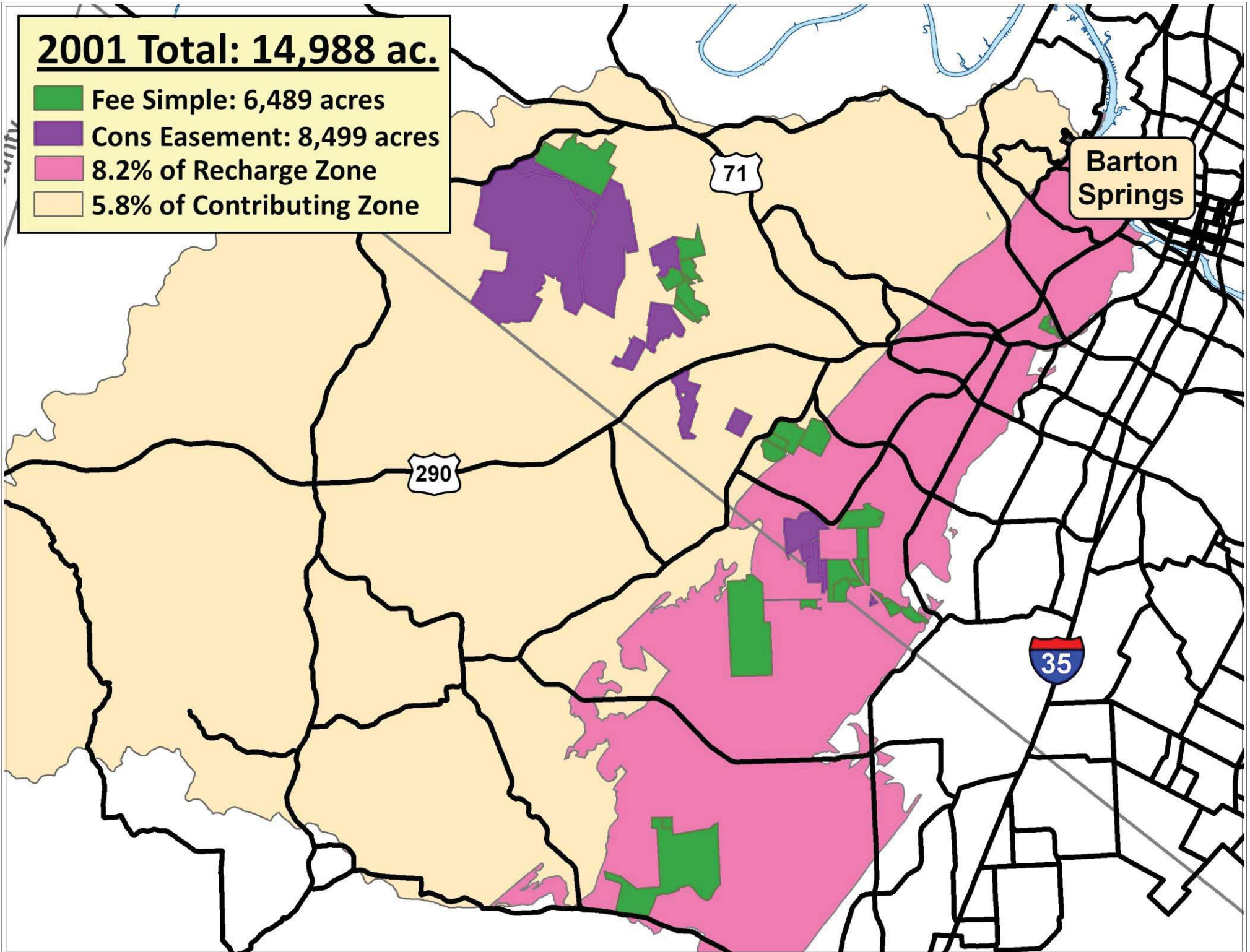
Environmental Conservation Program Manager/ WQPL

# Accomplishments of the Past 10 years

- Addition of over 10,000 acres
- Thinning of over 2,900 acres
- Seeding of native grass on over 1,800 acres
- Burning of over 4,800 acres
- Karst Management
- 12,437 volunteer hours logged
- 989 volunteers participated
- 16,686 individuals reached by outreach

**2001 Total: 14,988 ac.**

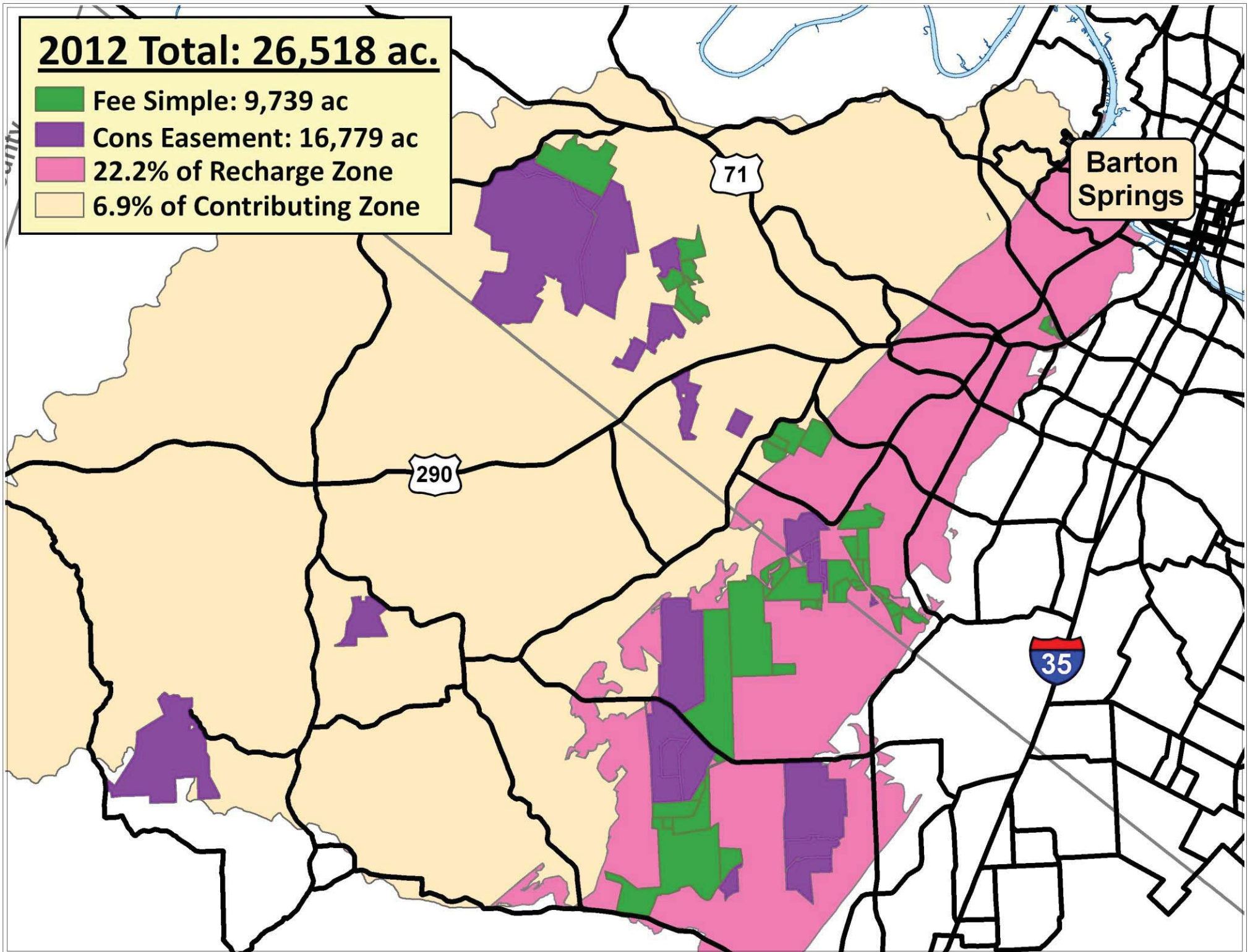
- Fee Simple: 6,489 acres
- Cons Easement: 8,499 acres
- 8.2% of Recharge Zone
- 5.8% of Contributing Zone





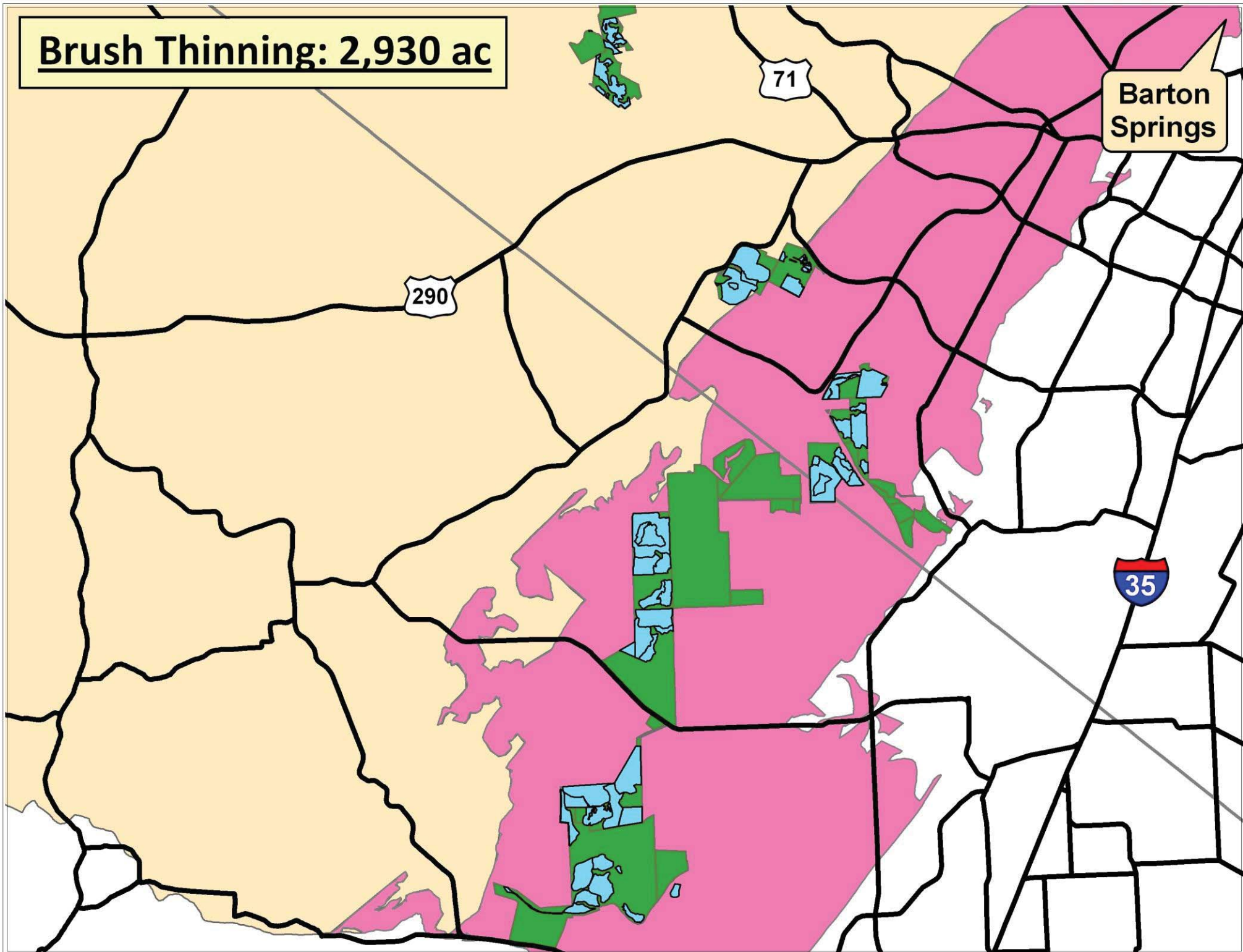
# 2012 Total: 26,518 ac.

- Fee Simple: 9,739 ac
- Cons Easement: 16,779 ac
- 22.2% of Recharge Zone
- 6.9% of Contributing Zone



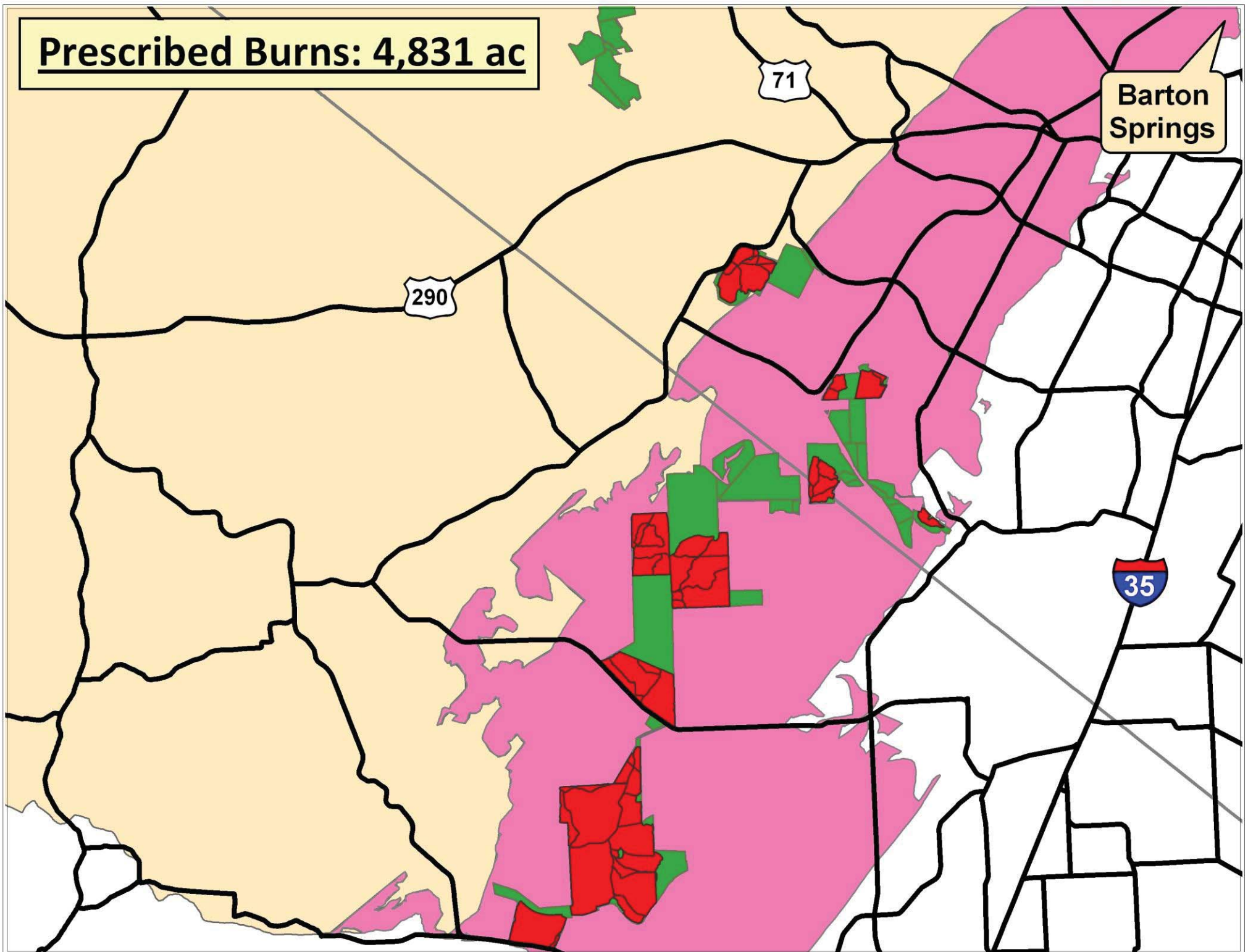
**Brush Thinning: 2,930 ac**

**Barton Springs**





**Prescribed Burns: 4,831 ac**



**Barton Springs**

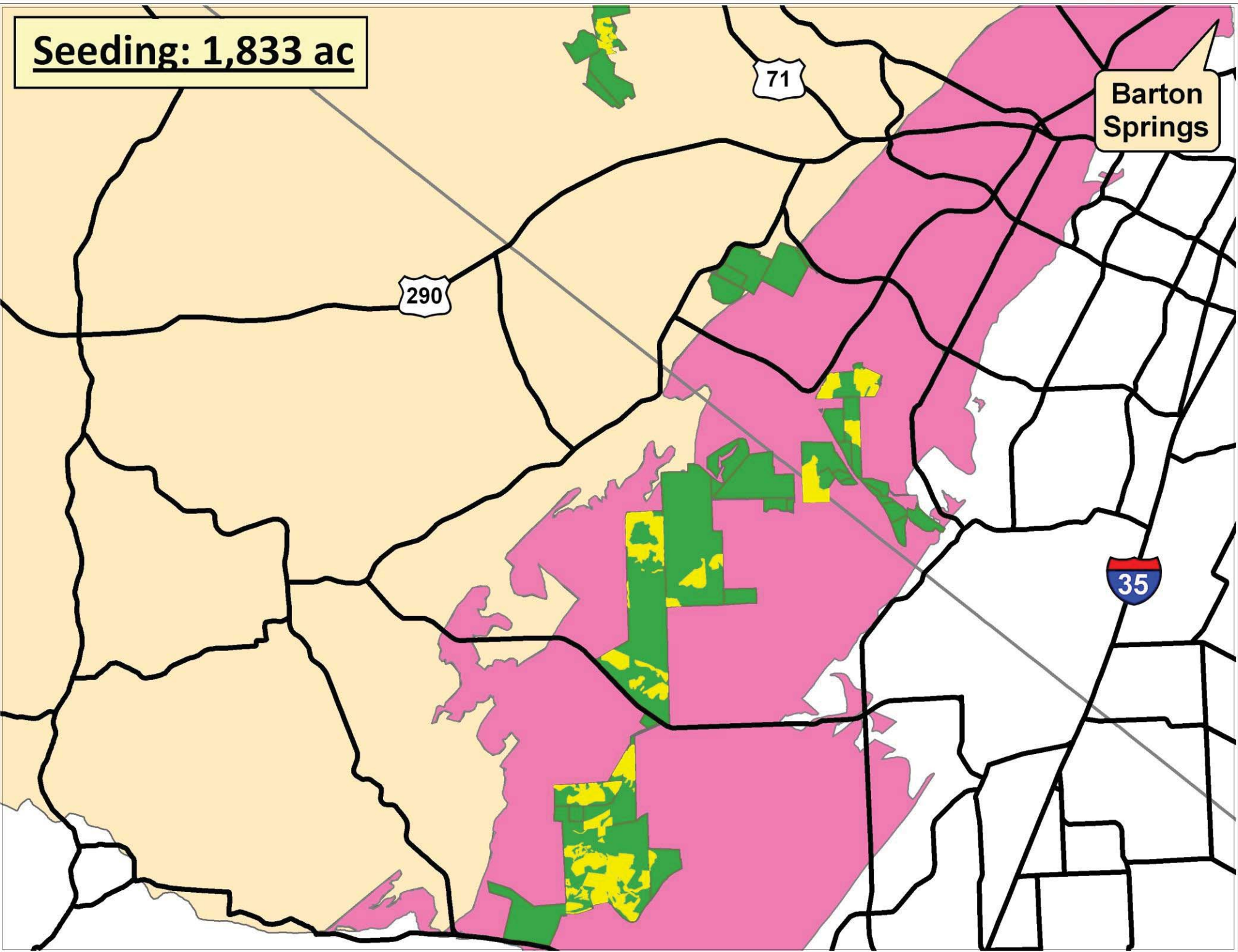
71

290

35

**Seeding: 1,833 ac**

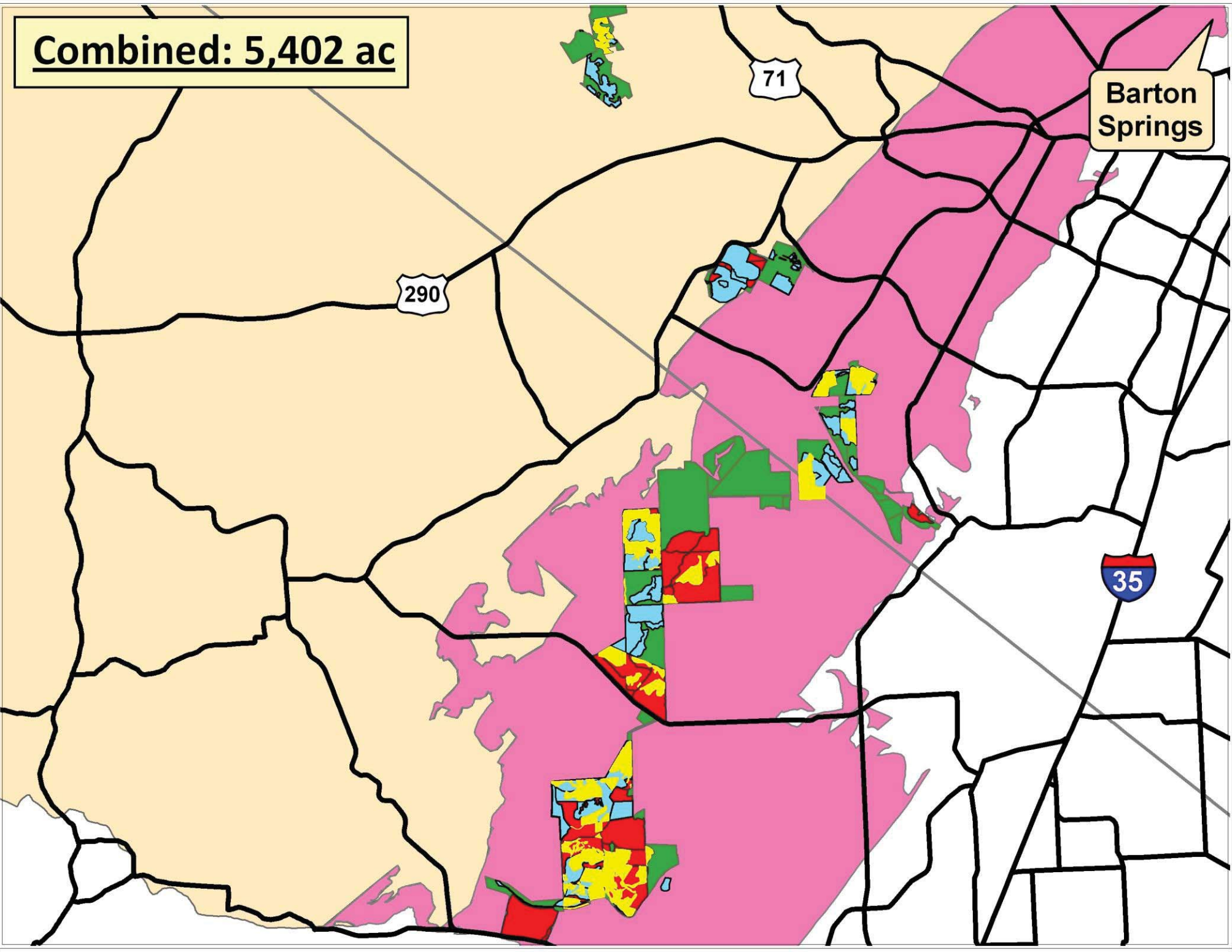
**Barton Springs**





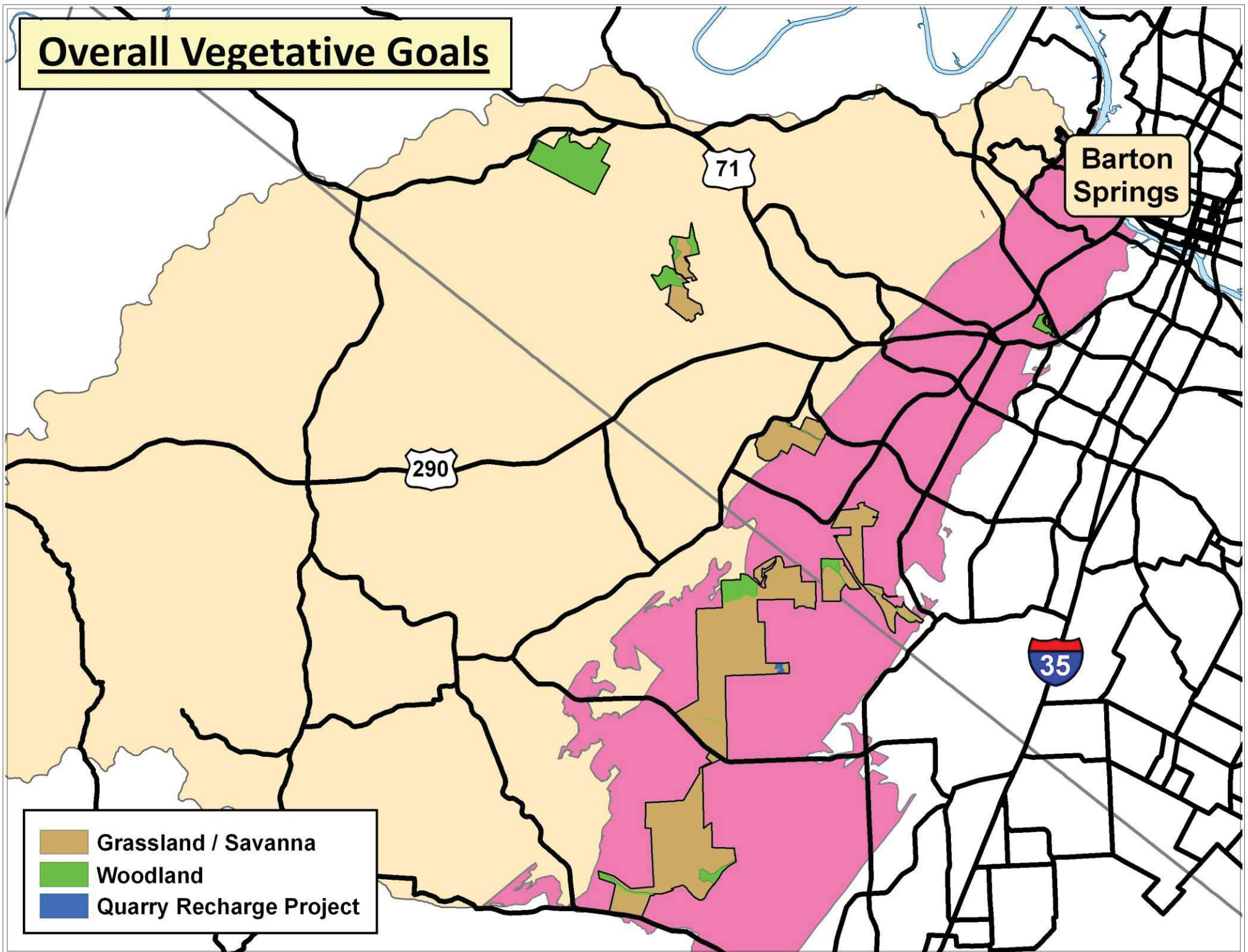
**Combined: 5,402 ac**

**Barton Springs**





# Overall Vegetative Goals



Barton Springs

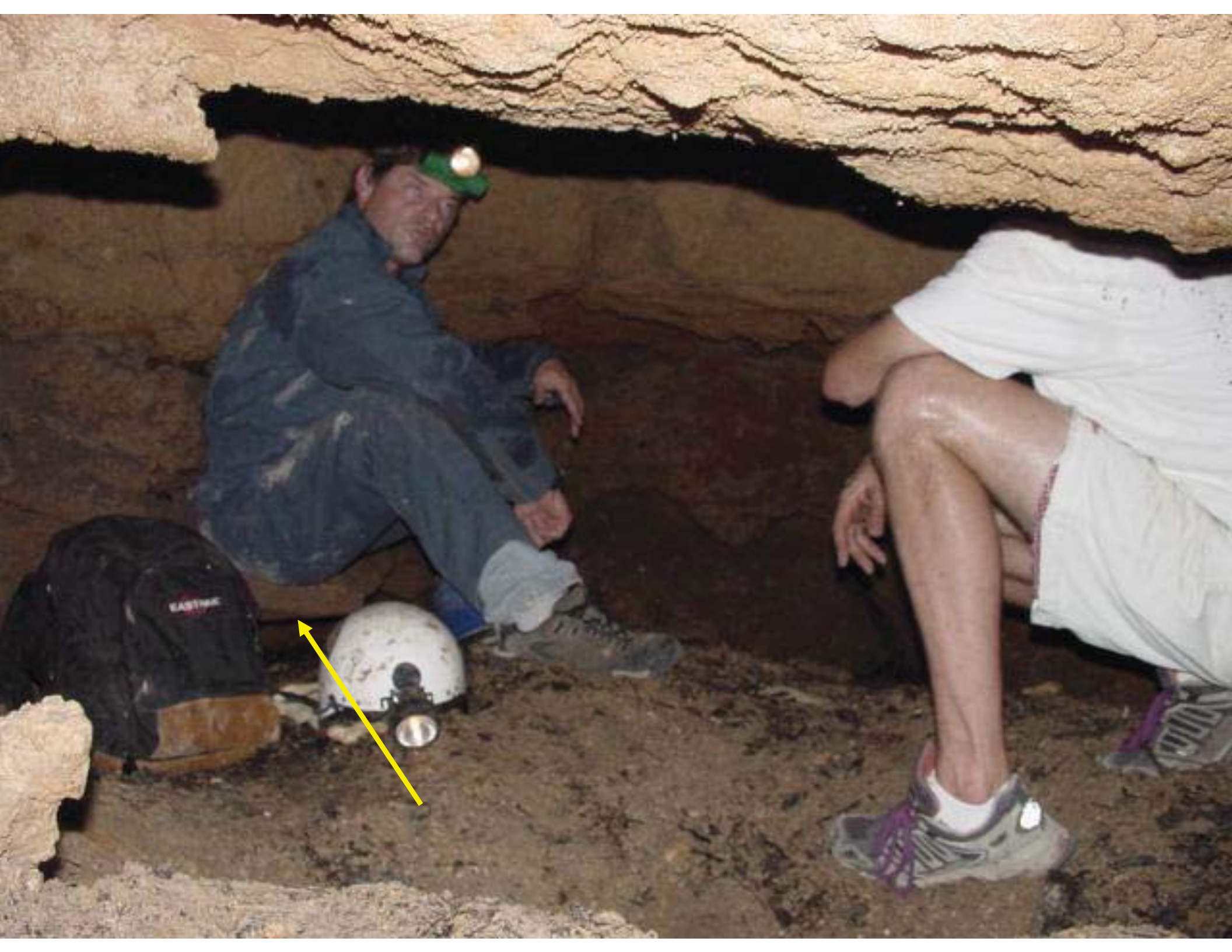
71

290

35

- Grassland / Savanna
- Woodland
- Quarry Recharge Project





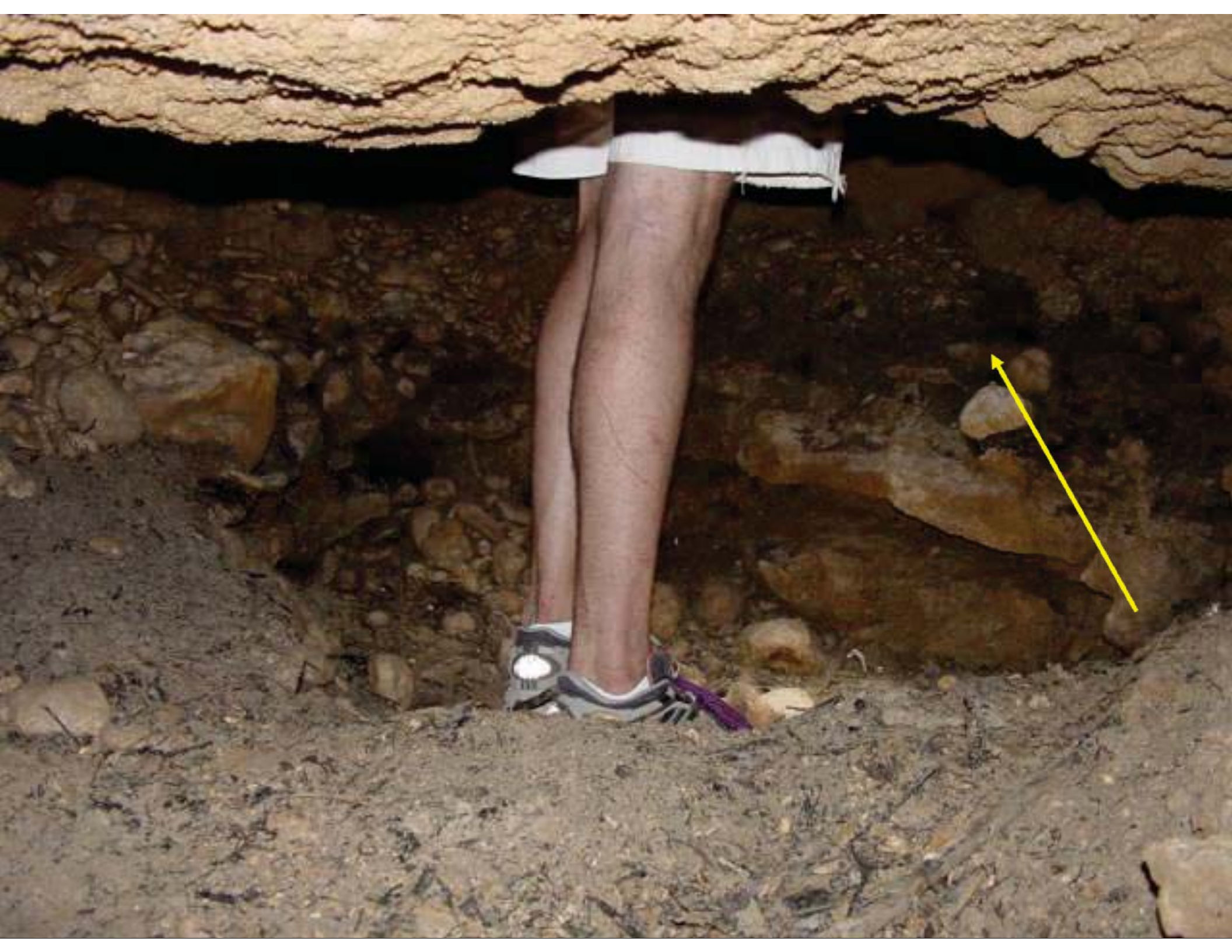






























Show Video

# Removal of Impervious Cover



2002



# Removal of Impervious Cover



2009















# Updates from Previous Plan

- Updated Scientific Literature Review
- Designation of woodland areas
- Simplification of seed list
- Adaptive management discussed
- Technical improvements standardized
- Quarry as recharge structure
- Active trails on Stenis and Slaughter
- Planning for Violet Crown Trail



















Thank You