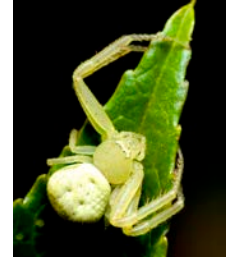




## Field Macro Photography Workshop

June 20-22, 2014

MO Ranch, Hunt Texas



Join award-winning naturalist and photographer Brian Loflin at Mo Ranch in the very heart of the magical Texas Hill Country for a three-day macro photography workshop geared to shooting in a field setting. This workshop will be packed with hands-on instruction to help you grow your photographic abilities with newfound skills, techniques and proficiency.

The historic, 500 acre Mo Ranch is located in a beautiful setting on the North Fork of the Guadalupe River. Here, habitats include: aquatic, riparian areas, grasslands, oak-juniper woodlands, and limestone hills. We will make use of all of them.

The workshop will feature hands-on learning and demonstrations with native flora and fauna of the area and will cover many subjects including discussions on:

- ◆ Equipment for getting close
- ◆ Tools to make macro work easier
- ◆ Grip and support equipment
- ◆ Backgrounds
- ◆ Wide Angle Close-Ups
- ◆ Lighting with Flash
- ◆ High Speed Flash
- ◆ High Key and White Box
- ◆ Tank Photos
- ◆ Macro Panorama
- ◆ Infrared Triggers
- ◆ Focus Stacking
- ◆ Extreme Macro
- ◆ How big is it? (Mensuration)

### Tentative Schedule:

Arrival 1:00 PM on Friday June 20, Departure at 1:00 PM on Sunday June 22

### Cost and Payment:

**Total price per person \$495.00 (Tentative) Single occupancy. Fifty percent (50%) of total required with booking. Balance due May 1, 2014.**

**Send payments through PayPal to: [bkloflin@austin.rr.com](mailto:bkloflin@austin.rr.com).**

**This includes all instruction, two nights lodging, two breakfasts, two lunches and two dinners, the use of a work room, and the Larkin Digital Lab. Does not include transportation to Mo Ranch or Hunt, Texas.**

**Minimum of six participants; maximum of ten.**

# Field Macro Photography Workshop

## Workshop Schedule (Tentative)

### **Friday, June 20, 2014**

1:00 - 5:00 PM	Initial meeting, instruction and discussions
5:00 – 6:00 PM	Check into rooms
6:00 - 7:00 PM	Dinner, King Dining Hall
7:30 – 8:30 PM	Evening Instruction/Shoot

### **Saturday, June 21, 2014**

7:30 – 8:30 AM	Breakfast, King Dining Hall
9:00 – 12:00 PM	Morning Instruction/Shoot
12:00 – 1:00 PM	Lunch, King Dining Hall
1:30 – 5:30 PM	Afternoon Instruction/Shoot and image processing
6:00 – 7:00 PM	Dinner, King Dining Hall
7:30 – 9:00 PM	Instruction/Shoot / Digital lab open

### **Sunday, June 22, 2014**

7:30 – 8:30 AM	Breakfast, King Dining Hall
9:00 – 12:00 PM	Morning Instruction/Shoot
12:00 – 1:00	Lunch, King Dining Hall
1:00 PM	Workshop concludes, Room checkout.



## Equipment to Bring:

Digital SLR camera recommended

Camera batteries and charger

Macro lens(es) and lenses from wide angle to telephoto are suggested.

Extension tubes and/or Bellows

Macro slider

Memory cards and Memory card reader (USB)

Electronic flash and spare batteries

Tripod

Diffuser and reflector

Filters: Polarizer, Split neutral density

Knee pads, kneeling pad and/or ground cloth

Flashlight

Comfortable, sturdy shoes (no flip-flops please)

Hat

Sunscreen, Insect repellent

Water bottle, canteen

Specialized tools including:

Small scissors, tweezers or forceps, bamboo shish-k-bob skewers,

Q-tips, small watercolor paintbrush, 4-inch flat paint brush, millimeter ruler,

Hand lens, lens cleaning kit, small spade, pruning shears, pencil and notebook.

