



THCCN Water Equity Project

Angelica Lopez

29 September 2022



Presentation Overview

- NRI Contributors
- Sponsors/Partners
- Project Background
- Final Report
 - Access
 - Organization
 - Key Findings
- Web Tool

texas hill country
conservation network

THCCN PARTNERS INVOLVED IN THIS PROJECT:



National Wildlife Federation
Texas Coast and Water Program



THE MEADOWS CENTER
FOR WATER AND THE ENVIRONMENT
TEXAS STATE UNIVERSITY



THE WATERSHED ASSOCIATION
LAND · WATER · CONNECTION



hill country alliance



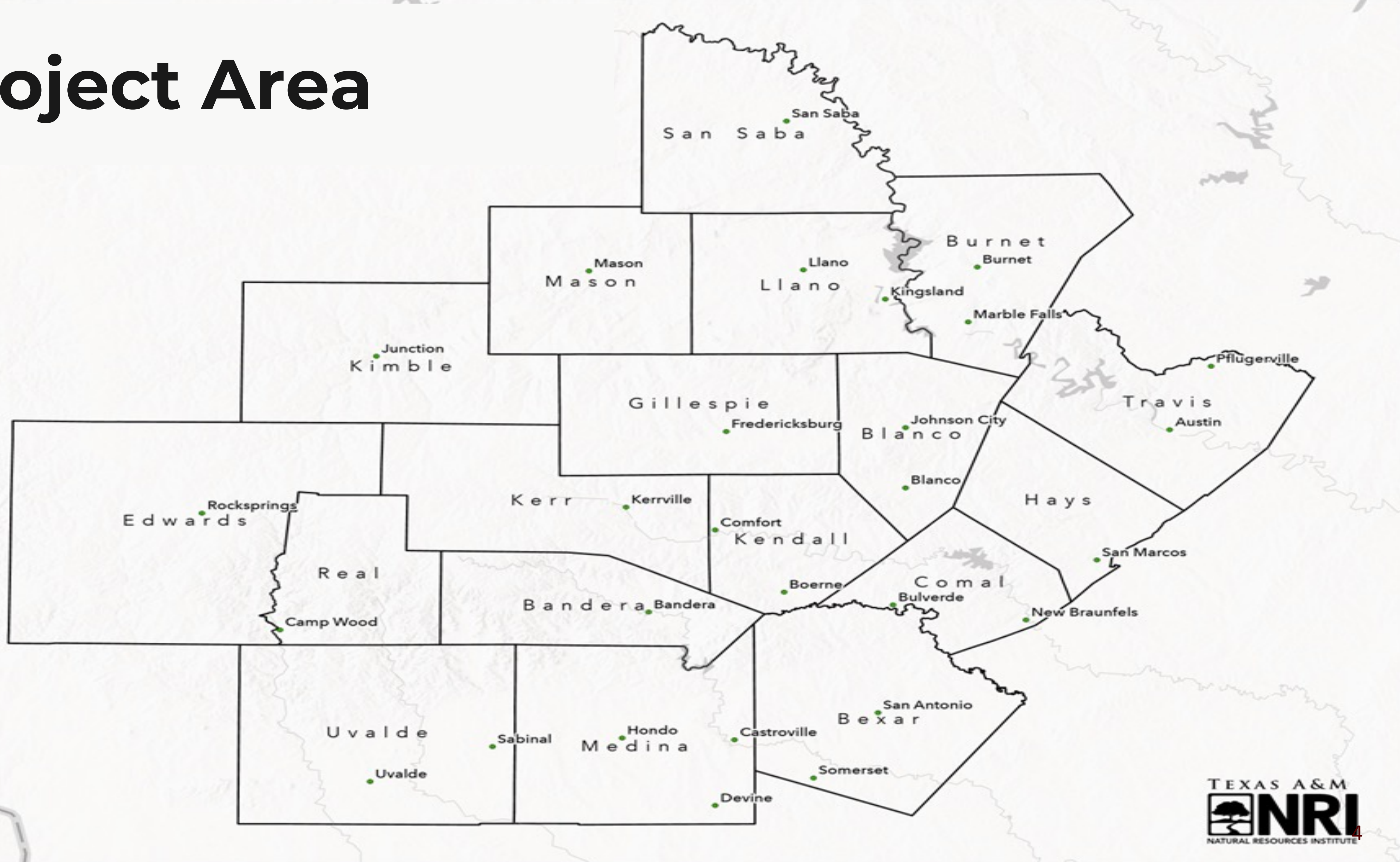
TEXAS WATER TRADE



Goals and Objectives

- Provide baseline, holistic understanding of where DEI and EJ issues intersect with water in the Hill Country
- Identify communities that are potentially impacted by and experiencing water inequity and water injustice
 - (Task I) Collect and curate demographic data.
 - (Task II) Collect water management information.
 - (Task III) Synthesize collected information and offer key recommendations.

Project Area



Report Organization

- Three Primary Sections to Report
- Demographics
- Water Characteristics
- Water Challenges/Concerns (Survey)

Water and Equity in the Texas Hill Country

Final Report:
The Hill Country Conservation Network

Texas A&M Natural Resources Institute
1919 Oakwell Farms Parkway, Suite 100
San Antonio, Texas 78218
Telephone: 210-277-0292 x 101
Report Contact Email:
angelica.lopez@ag.tamu.edu



Report Partners:

texas hill country
conservation network

THCCN PARTNERS INVOLVED IN THIS PROJECT:

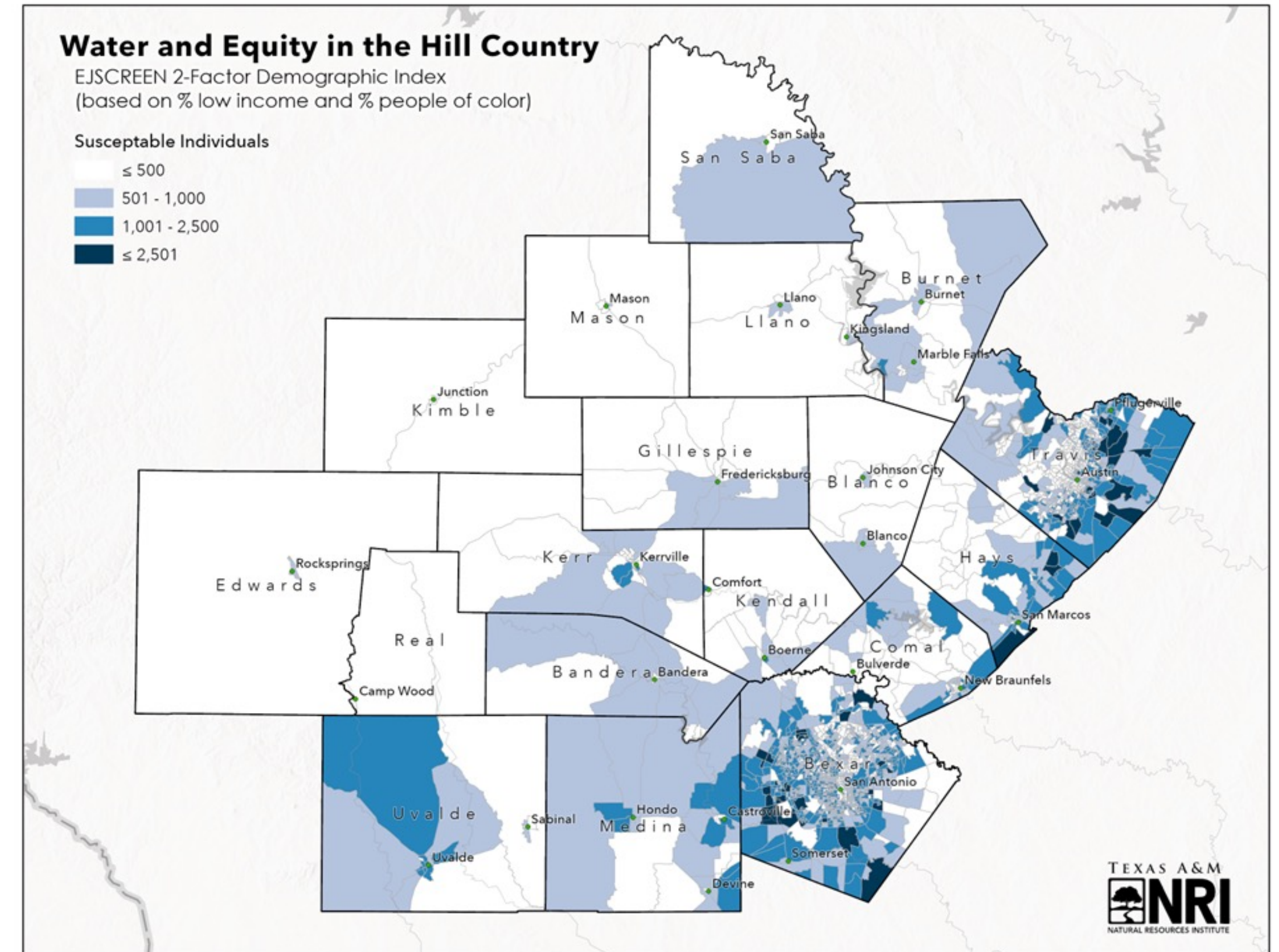


This project made possible with support from the Water Funders Initiative

June 2022

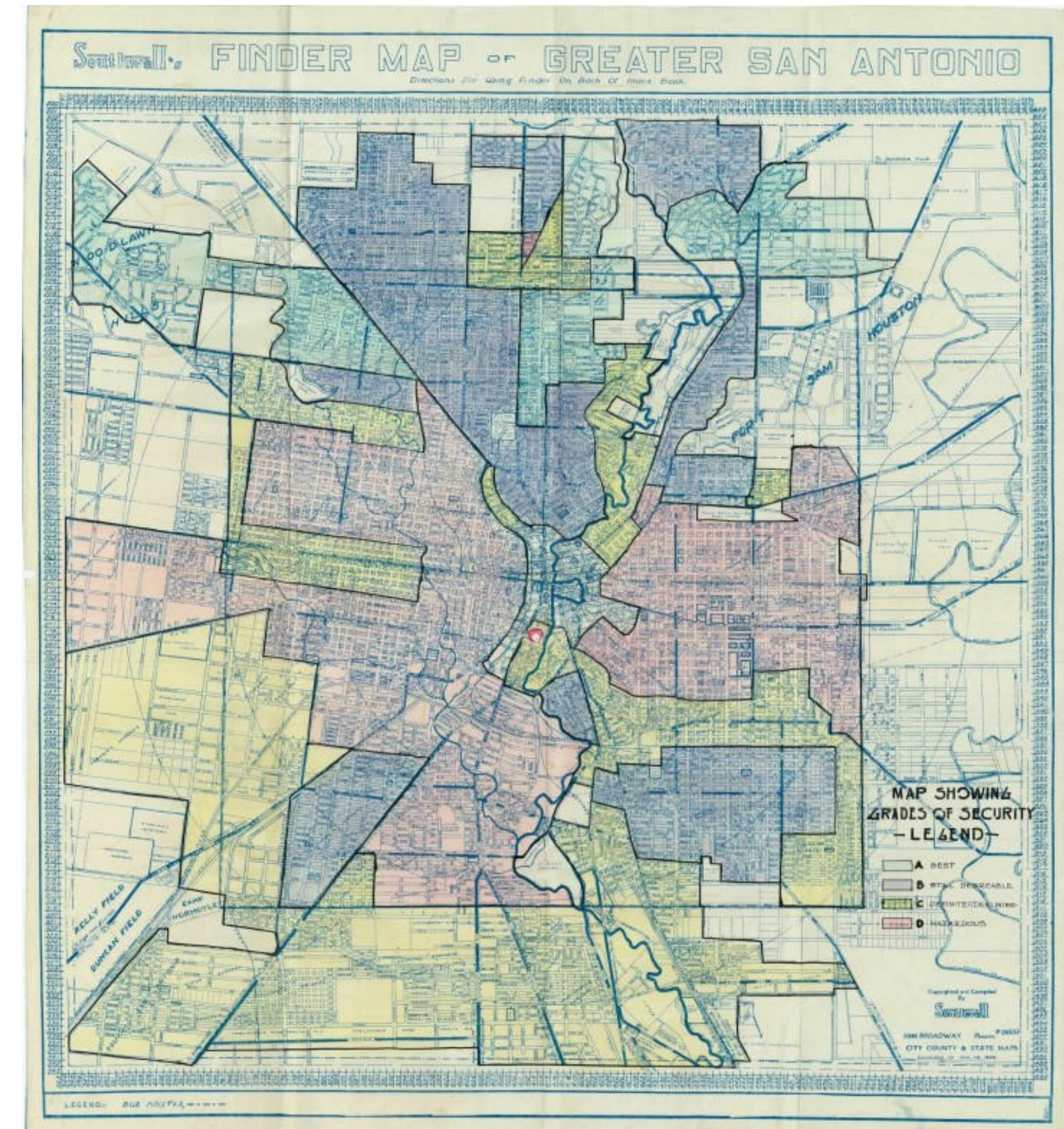
Section I: Demographics in HC

- Overview
- Historical Demographics
- Current Demographics
- Landowner Demographics
- Policymakers Demographics
- Communities At-Risk



Demographics - *Historical*

- Historical events played an important role in the current demographic makeup
- Development and displacement were not random acts, were influenced by historical drivers





Demographics – *Current*

- Latinos followed by African Americans, primary Communities At-Risk (CAR) in Hill Country
- CAR are younger, primarily found in urban areas, higher population density
- White and older populations, primarily found in rural areas, lower population density
- Action: Programming and engagement, specific to targeted communities
- Action: We continue to shape history of Hill Country with collective decisions



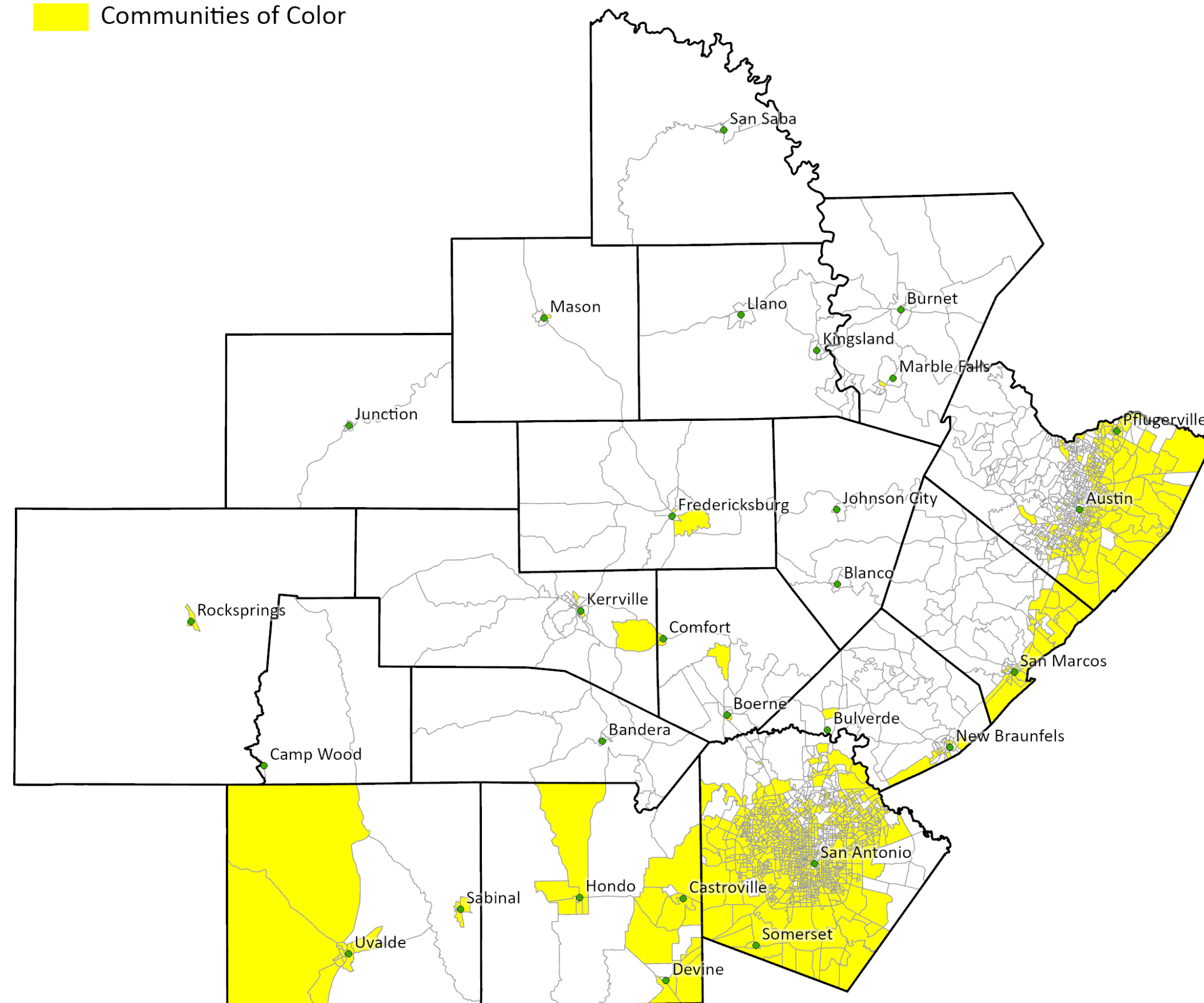
Demographics – *Landowner/Policy Makers*

- Hill Country rural landowners are primarily non-Latino White, male and older, reflective of rural communities (86-94%, operations, producers, acres operated)
- Policymaker structure reflects county population with respect to race, age, and ethnicity, as in rural and urban counties, with some exceptions
- Action: Because pockets of CAR in rural areas are small in number, may not be well represented in policy-maker structure.

Demographics - CAR

Water Challenges in Texas Hill Country

Communities of Color



Water and Equity in the Hill Country

EJSCREEN 2-Factor Demographic Index
(based on % low income and % people of color)

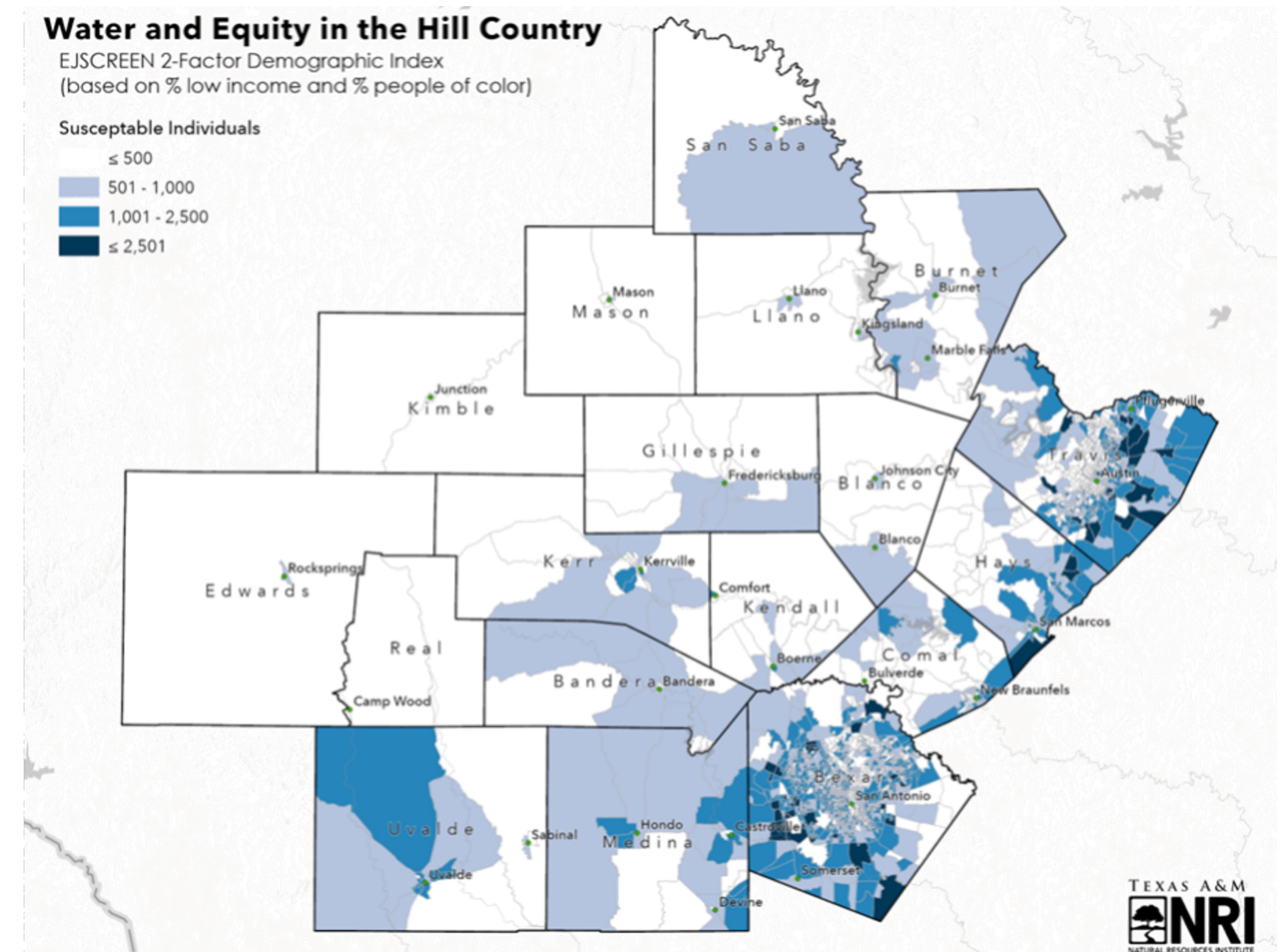
Susceptible Individuals

≤ 500

501 - 1,000

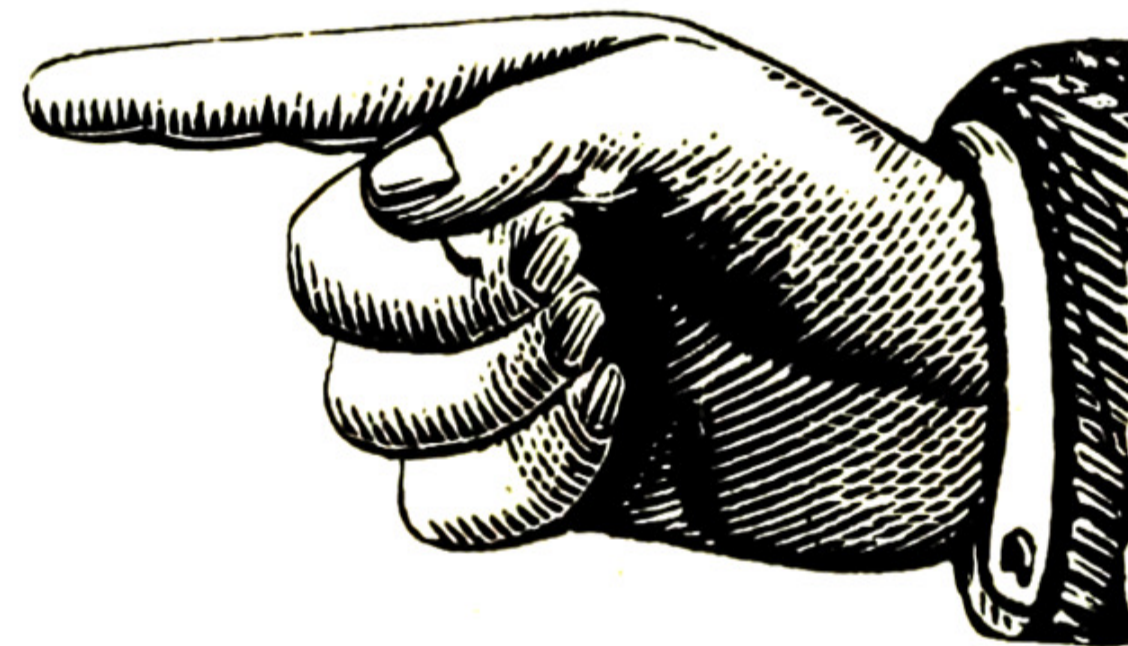
1,001 - 2,500

≥ 2,501

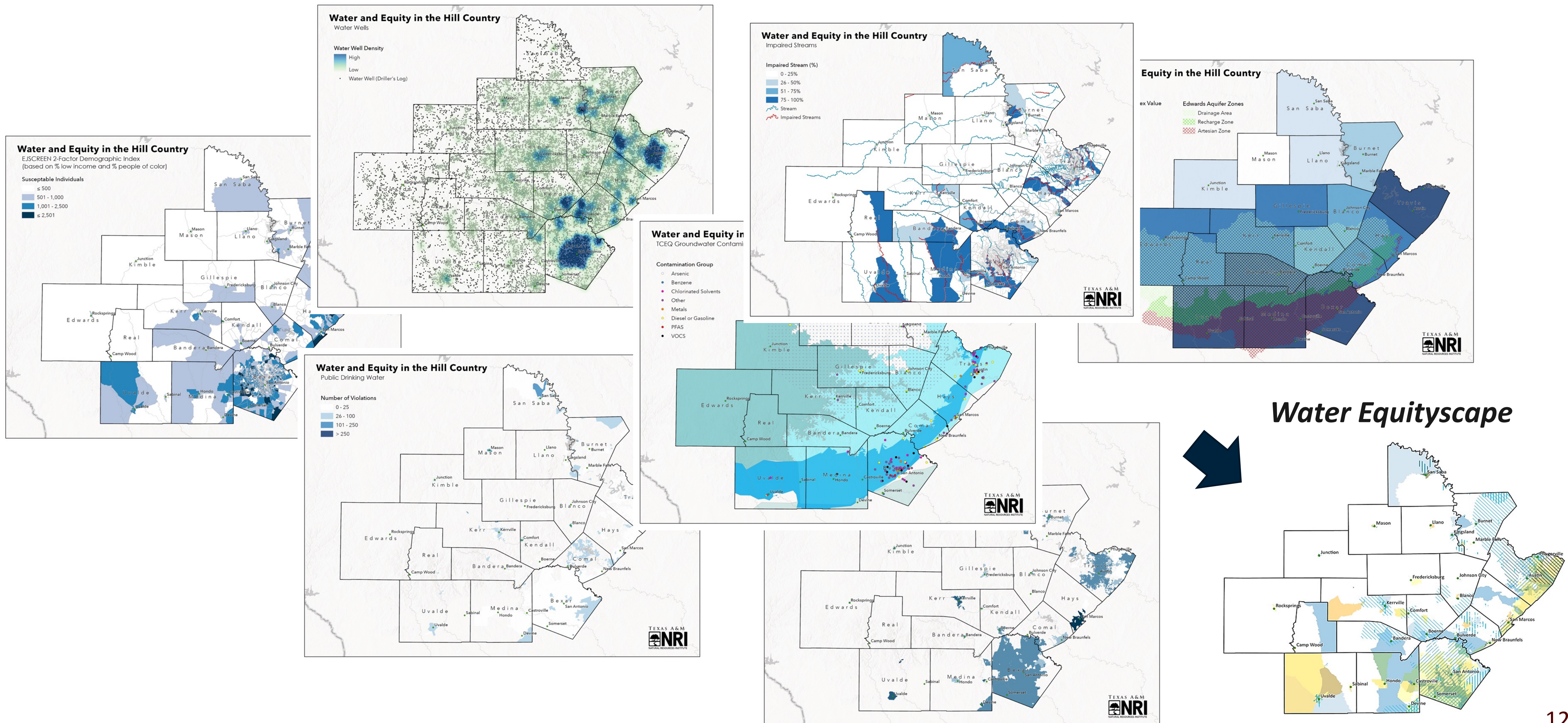


Section II: Water Characteristics

- Overview
- Water Supply
- Water Quality
- Water Affordability
- Flood Risk
- Water Recreation
- Water Equityscape
- Key Take-Aways

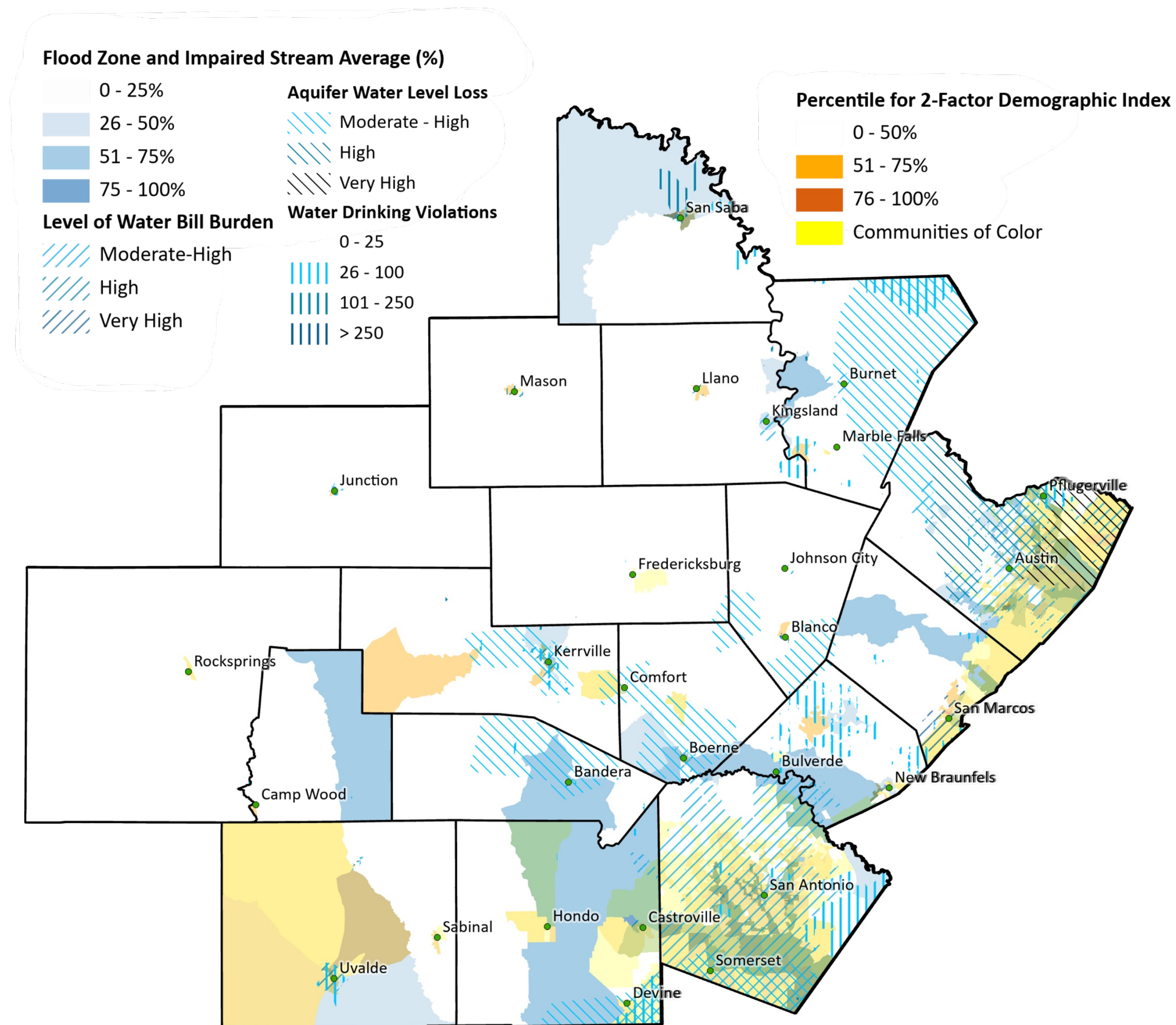


Bringing it Together...

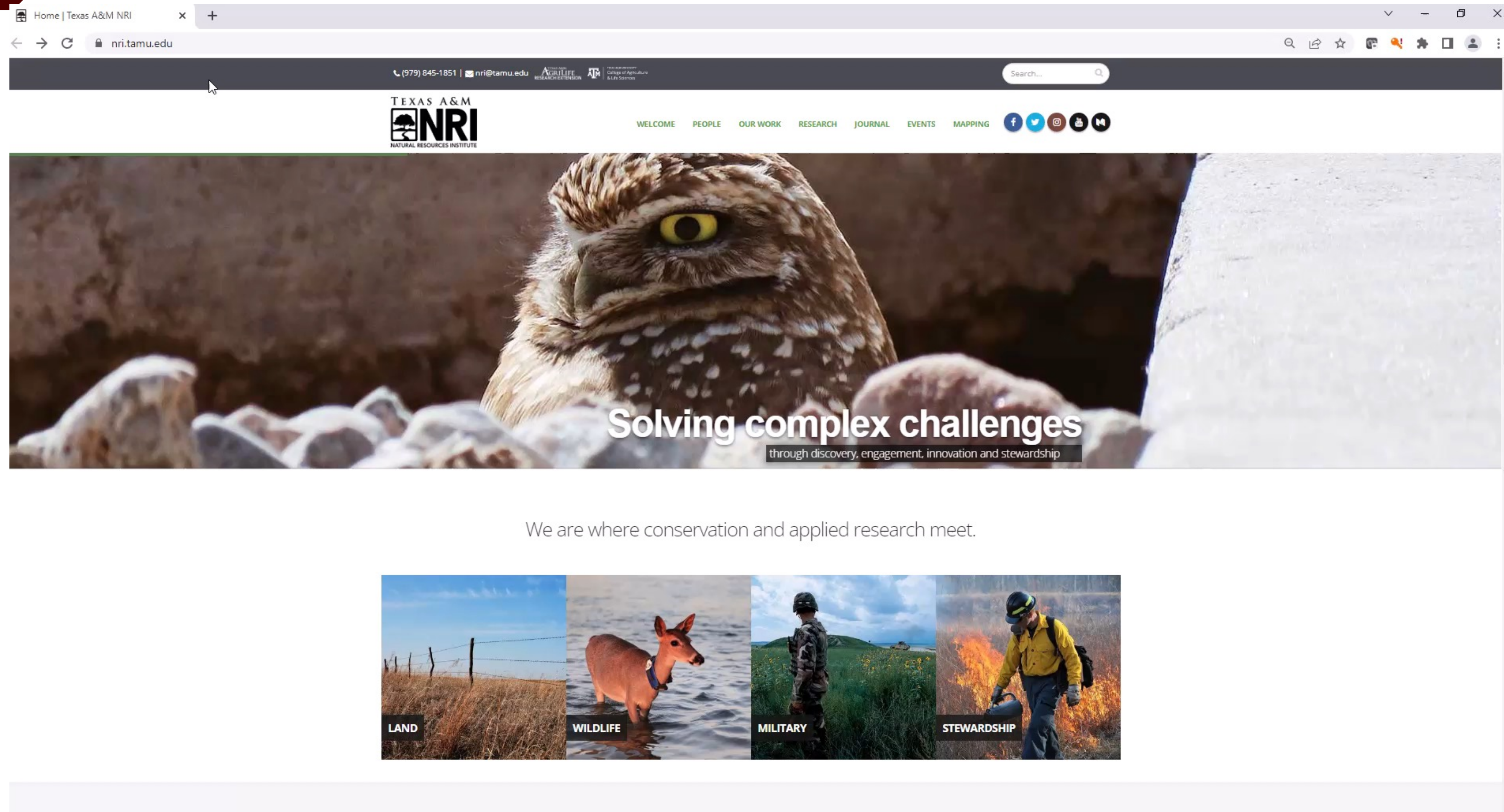


Water Equityscape

- Communities of Color
- High EJSCREEN (%)
- Impaired Stream (%)
- Flood Zone Area (%)
- High Water Bill Burden
- Drinking Water Violations
- Aquifer Water Level Decline



Water Equityscape Demo

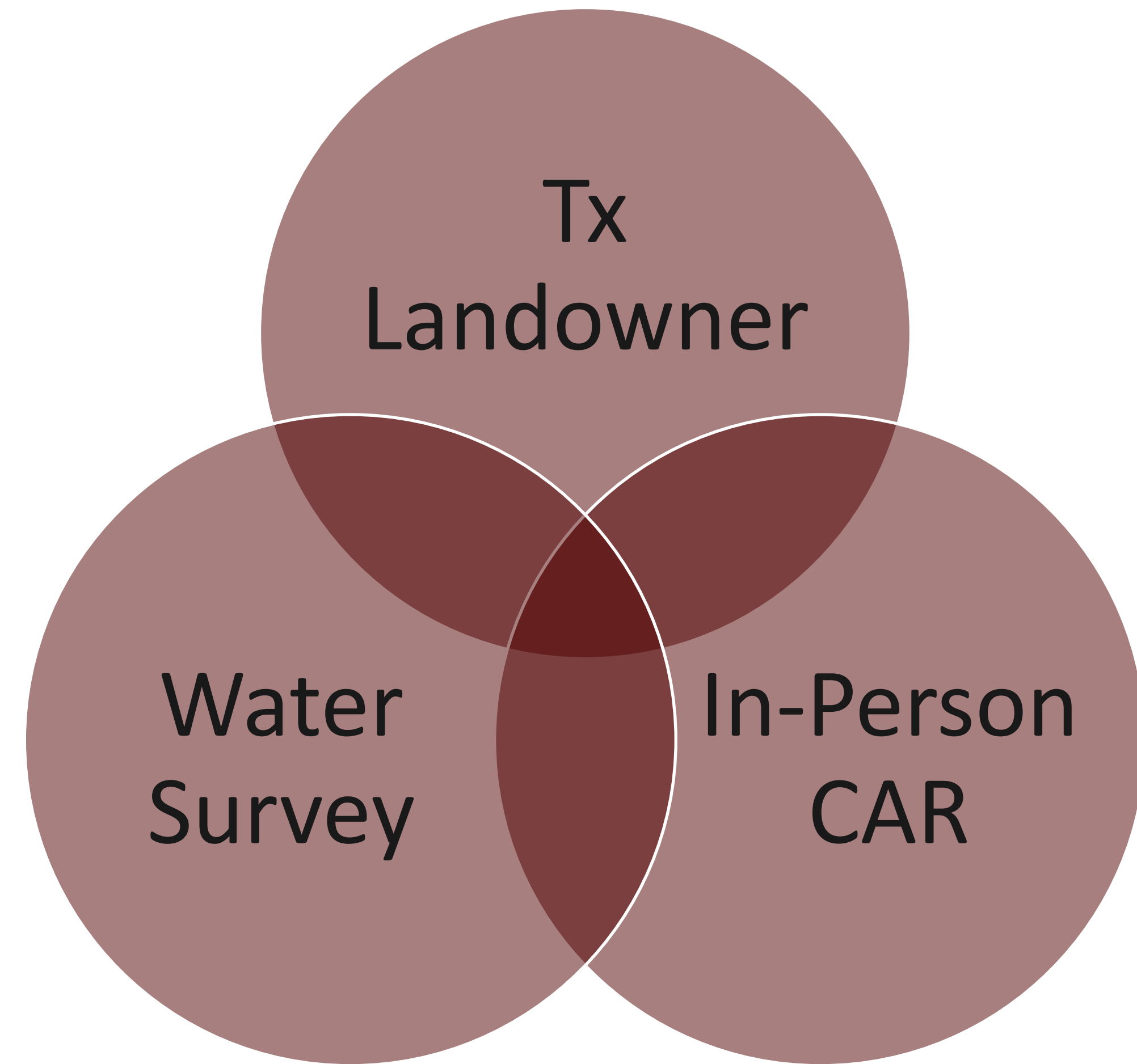


Section III: Water Issues/Concerns (Survey)

- Water Uses
- Ground Water Management
- Water Concerns
- Dependability and Access

Audiences

- Landowners
- Water User/Customer
- Community Representative
- Water Provider
- Water Administrator



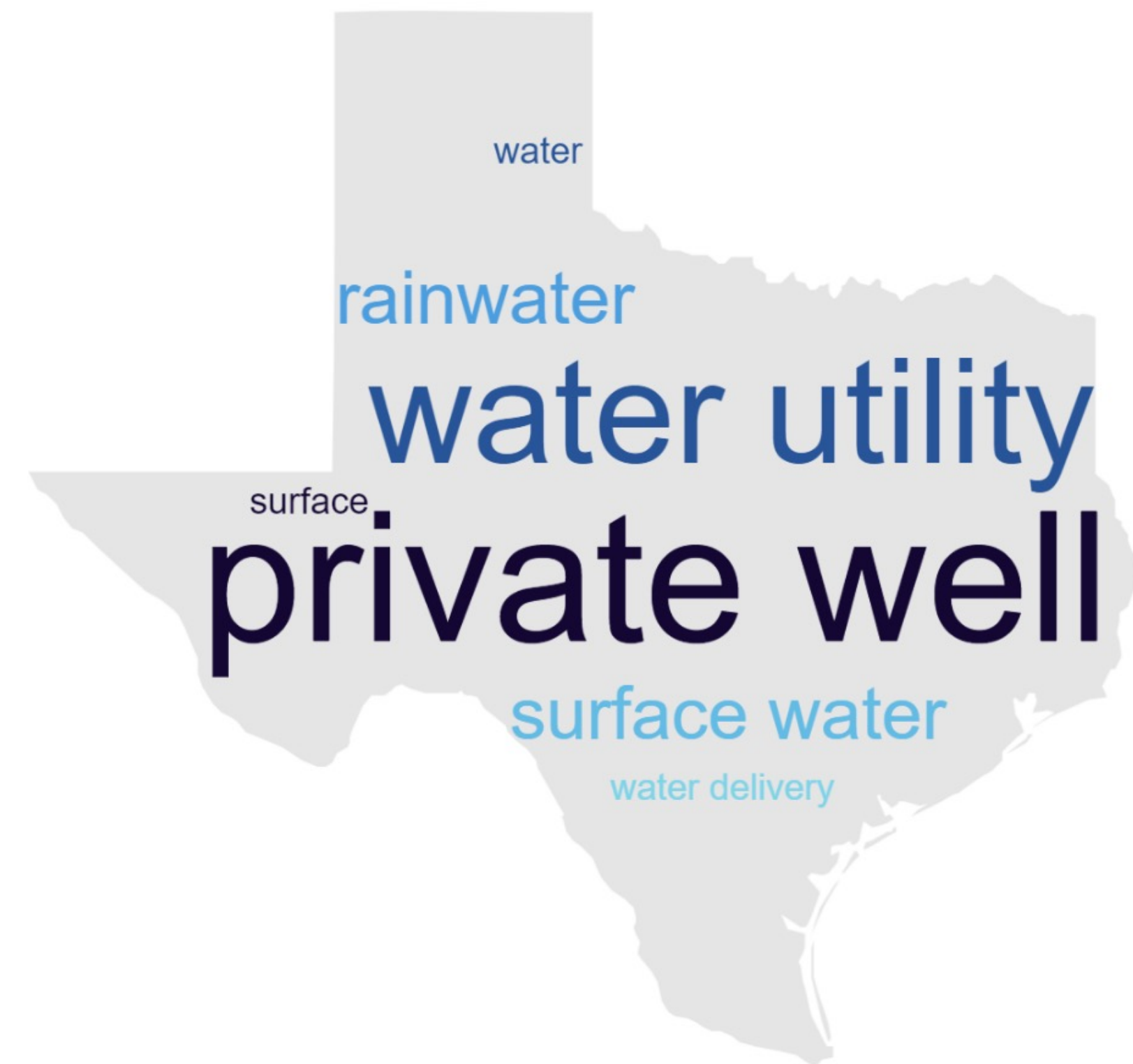
Online Surveys = 406

In-person = 28

Water Survey – *Water Uses*

- Water uses vary by water source
- Dependency on groundwater wells
- Awareness of need for conservation efforts related to population growth and drought

Top three water sources?



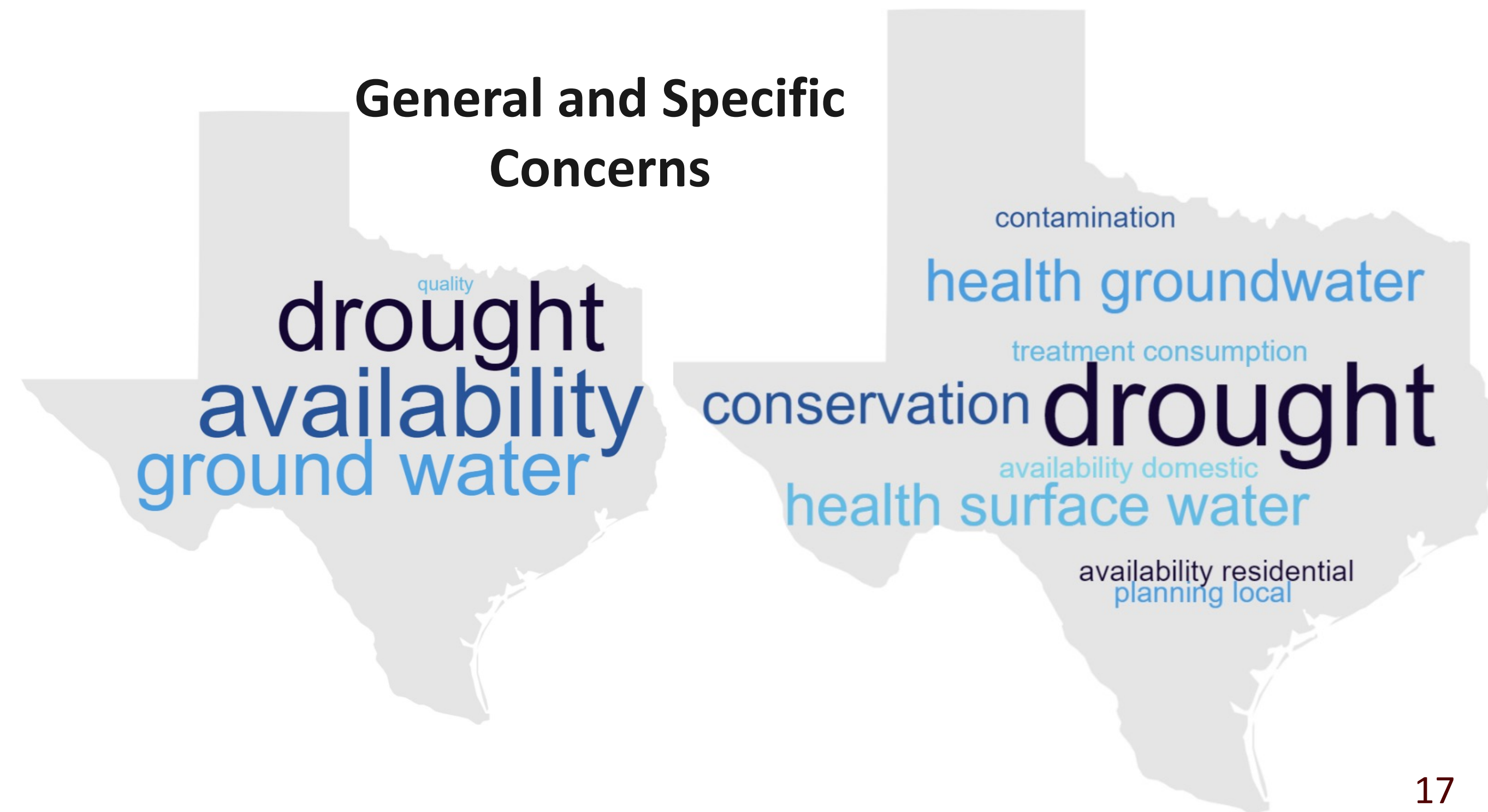
Water Survey – *GW Management and Water Concerns*

- Reliance on groundwater sources
- Drought, water availability and water conservation relevant across all survey groups

Who is responsible for water quality of wells?



General and Specific Concerns





Questions?

<http://nri.tamu.edu/>
<http://txlandtrends.org/>

Report Location

<https://nri.tamu.edu/publications/research-reports/2022/water-and-equity-in-the-texas-hill-country/>



[WELCOME](#)

[PEOPLE](#)

[OUR WORK](#)

[RESEARCH](#)

[JOURNAL](#)

[EVENTS](#)

[MAPPING](#)

[Home](#) / [Research](#) / [Research Reports](#) / [2022](#)

Water and Equity in the Texas Hill Country

[Full text](#)

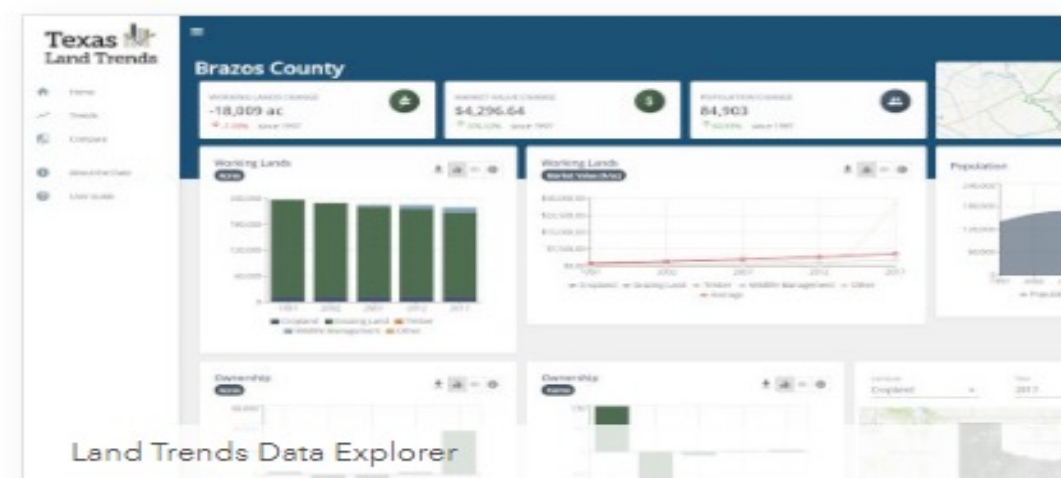
Authors: Angelica Lopez, Roel Lopez, The Hill Country Conservation Network

The Texas Hill Country Conservation Network (THCCN) coordinates partnerships working to scale up the impact of conservation-focused organizations in the region. In order to achieve their respective missions, the partnership needed an assessment of water challenges and how these challenges impact Hill Country communities, particularly those communities comprised of underserved or at-risk populations. This report provides a baseline, holistic understanding of where diversity, equity and inclusion (DEI) and environmental justice (EJ) issues intersect with water issues and challenges within the Texas Hill Country, and, further, outlines key findings and defines action items moving forward.

Web Tool Location/Demo

[Mapping](#) [Web Mapping Applications](#) [Portal](#) [Data Hub](#) [Education Resources](#) [Contact Us](#)

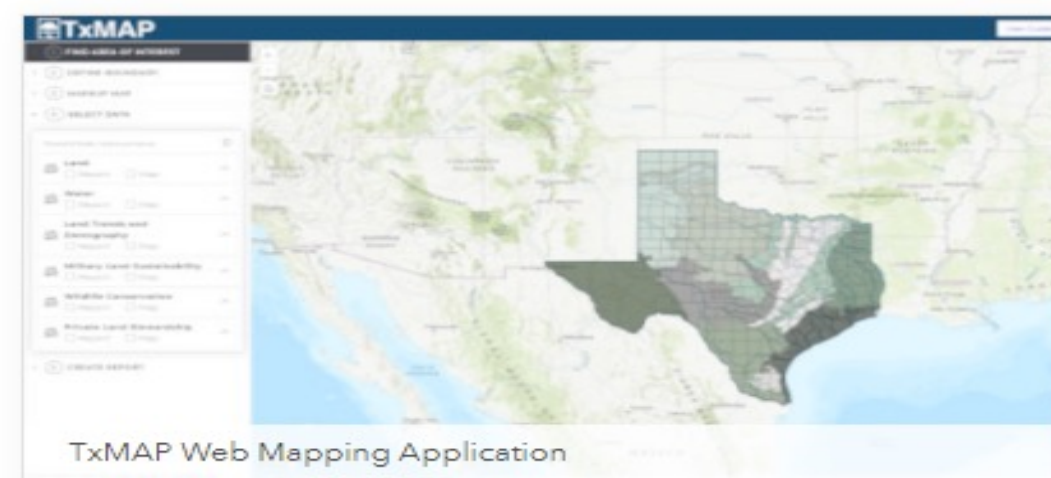
Web Mapping Applications



Land Trends Data Explorer

The Land Trends data explorer allows users to explore working land trends for Texas from 1997-2017.

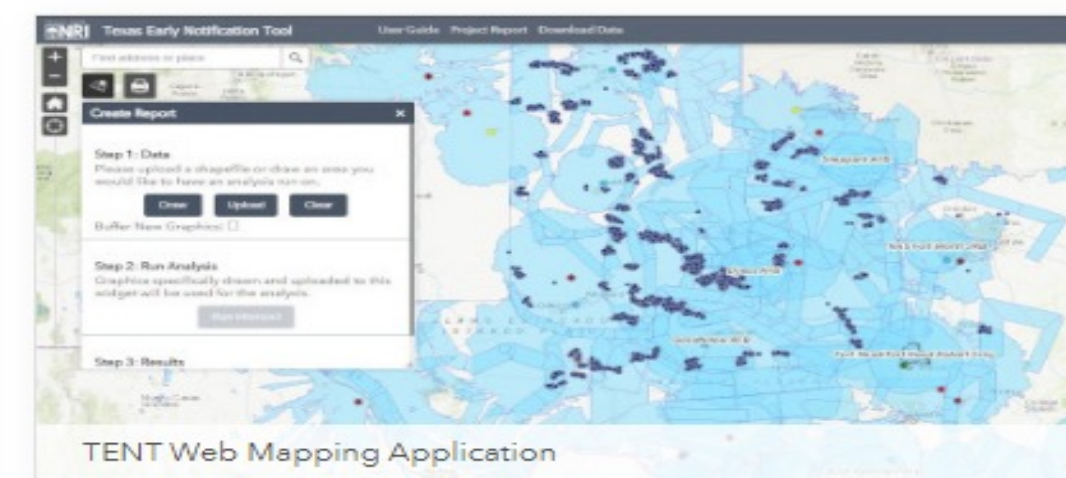
[View Dashboard](#)



TxMAP

TxMAP allows users to customize a map by defining areas of interest to perform an intersect on selected layers. Results can be printed directly, or exported as an informative report.

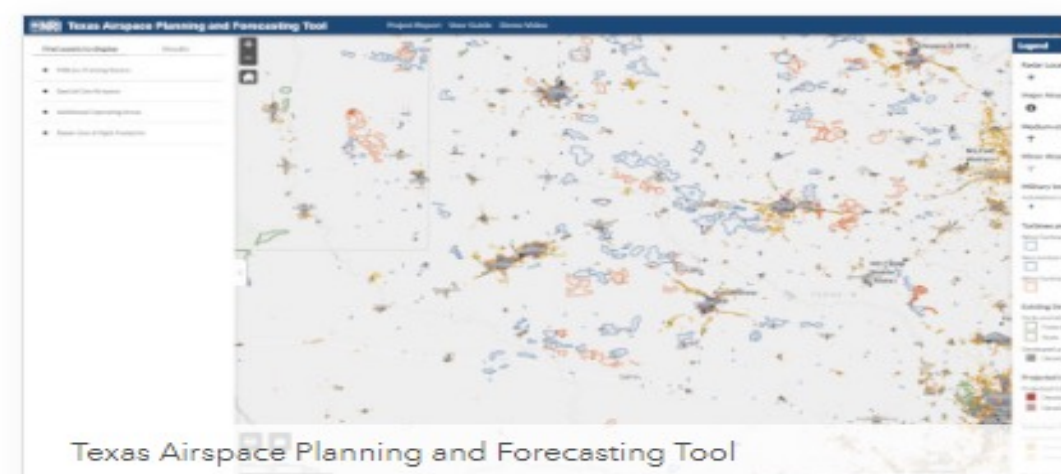
[View Web App](#)



Texas Early Notification Tool

Texas Early Notification Tool (TENT) is a tool built for wind energy professionals that allows for strategically planning future wind energy development.

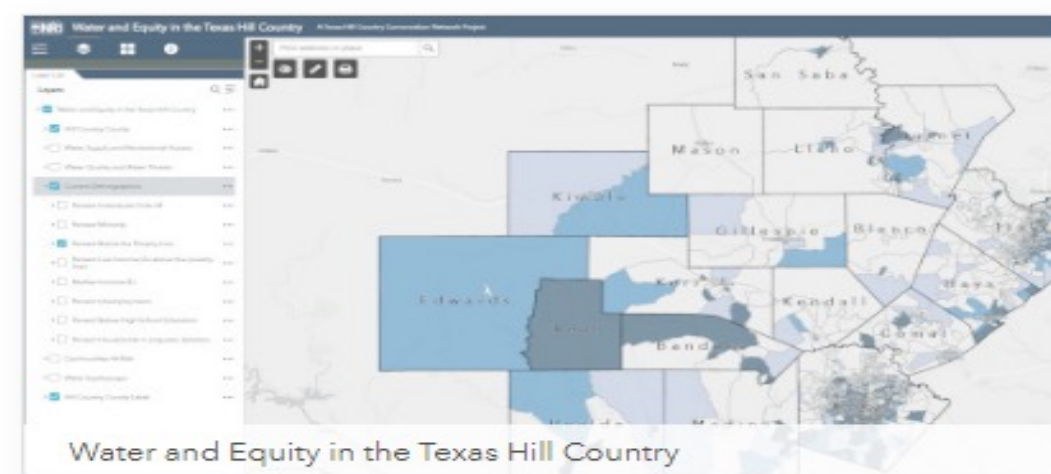
[View Web App](#)



Texas Airspace Planning and Forecasting Tool

Texas Airspace Planning and Forecasting Tool provides Texas military installations with an interactive way to visualize future land use change that may have adverse implications on military test and training spaces, especially aviation assets.

[View Web App](#)



Water and Equity in the Texas Hill Country

The goal of this project is to provide a baseline, holistic understanding of the intersection between diversity, equity and inclusion (DEI) and environmental justice (EJ) issues and water threats and challenges within the Texas Hill Country.

[View Web App](#)

<https://gis.nri.tamu.edu/>