

Large Landscape Conservation in the Texas Hill Country *UT Hill Country Studio*

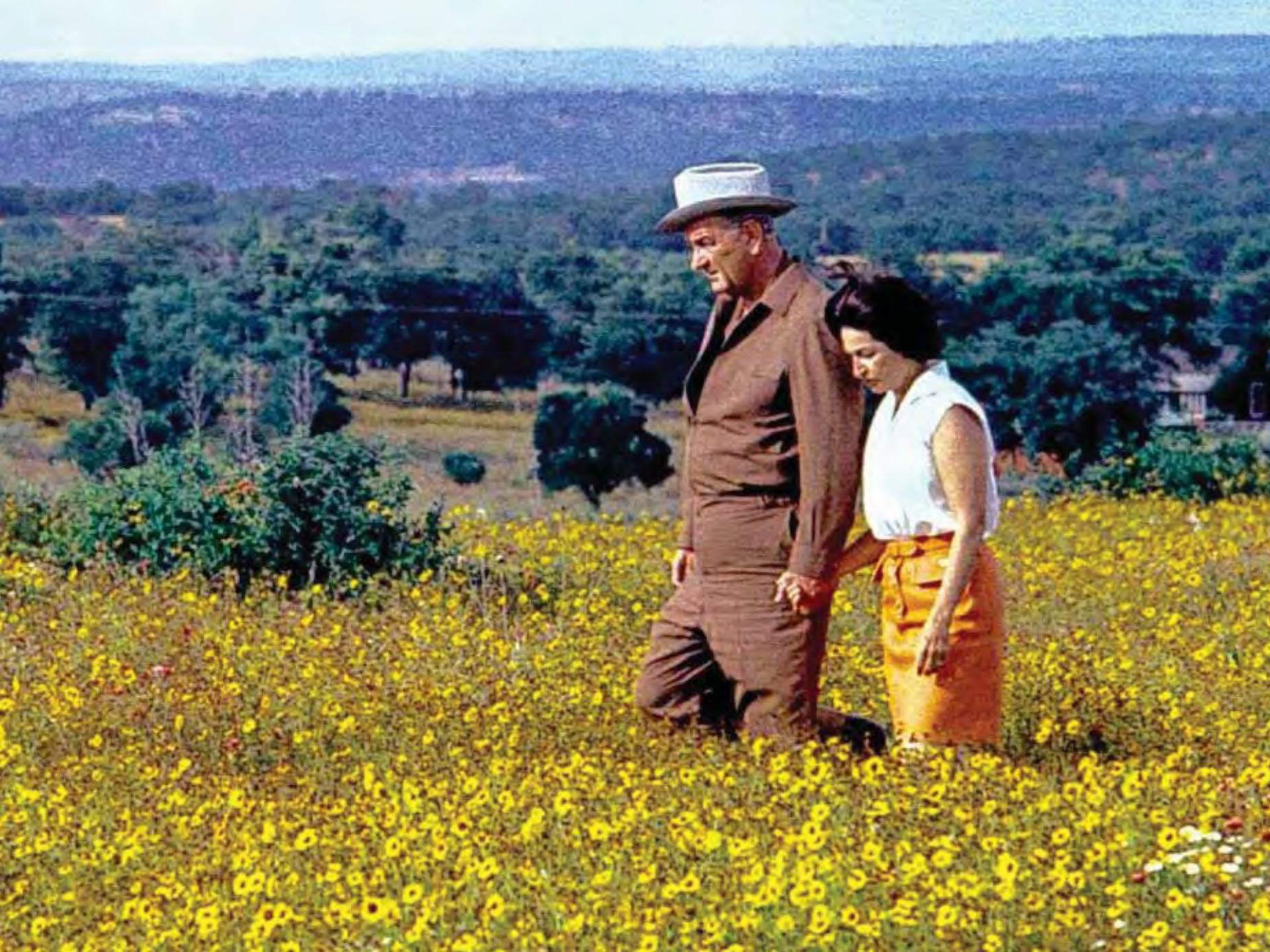
Robert Yaro, Potter Rose Visiting Professor
University of Texas School of Architecture











The Hill Country Studio's Goals:

1. Identify the region's most significant resources
2. Identify the threats to these resources and the potential impacts of their loss or degradation
3. Study how similar regions across the country are being preserved
4. See which best practices might be adapted to the Hill Country to protect the region's landscape and resources











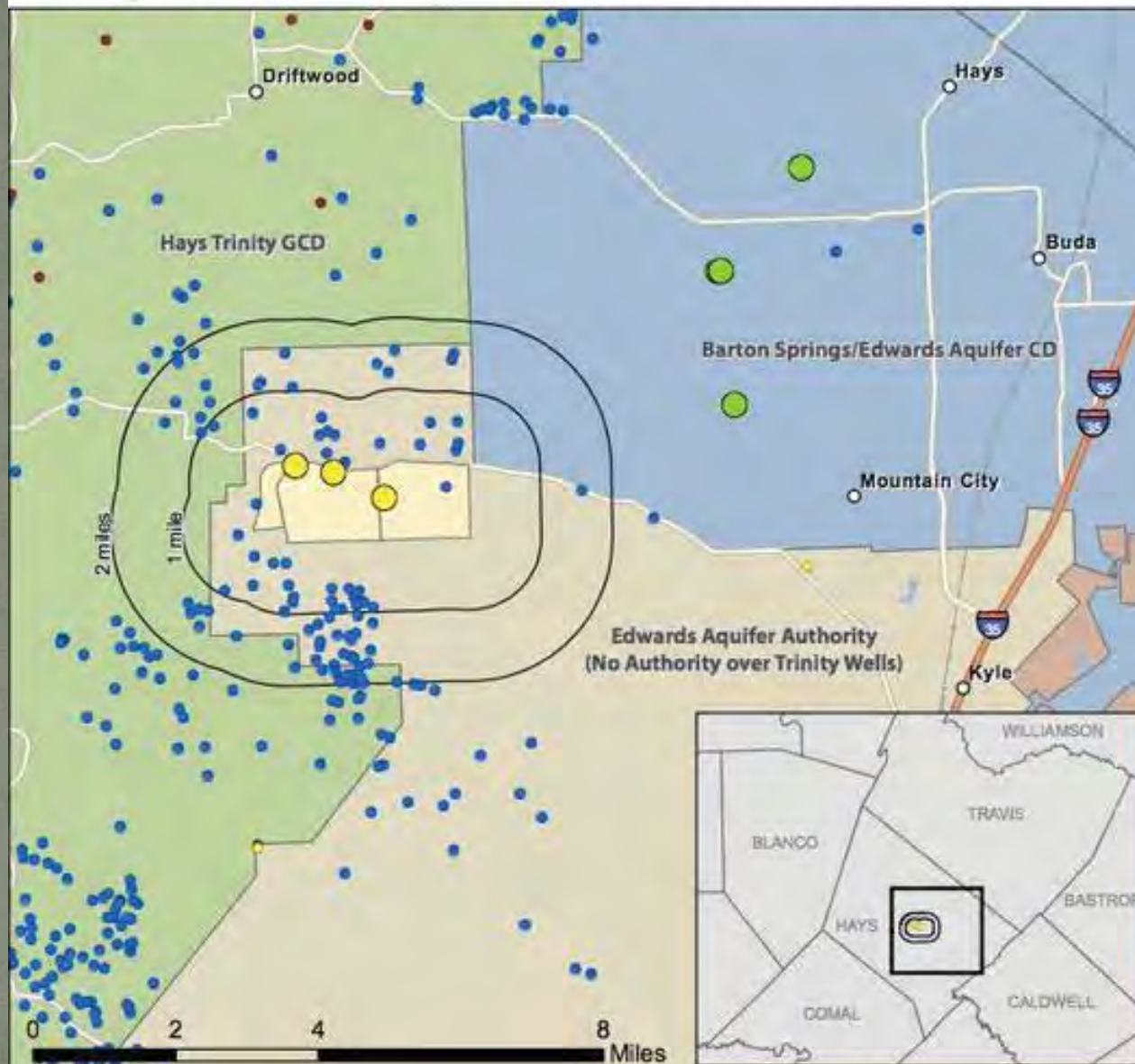








Trinity Wells near Proposed Electro Purification Well Field

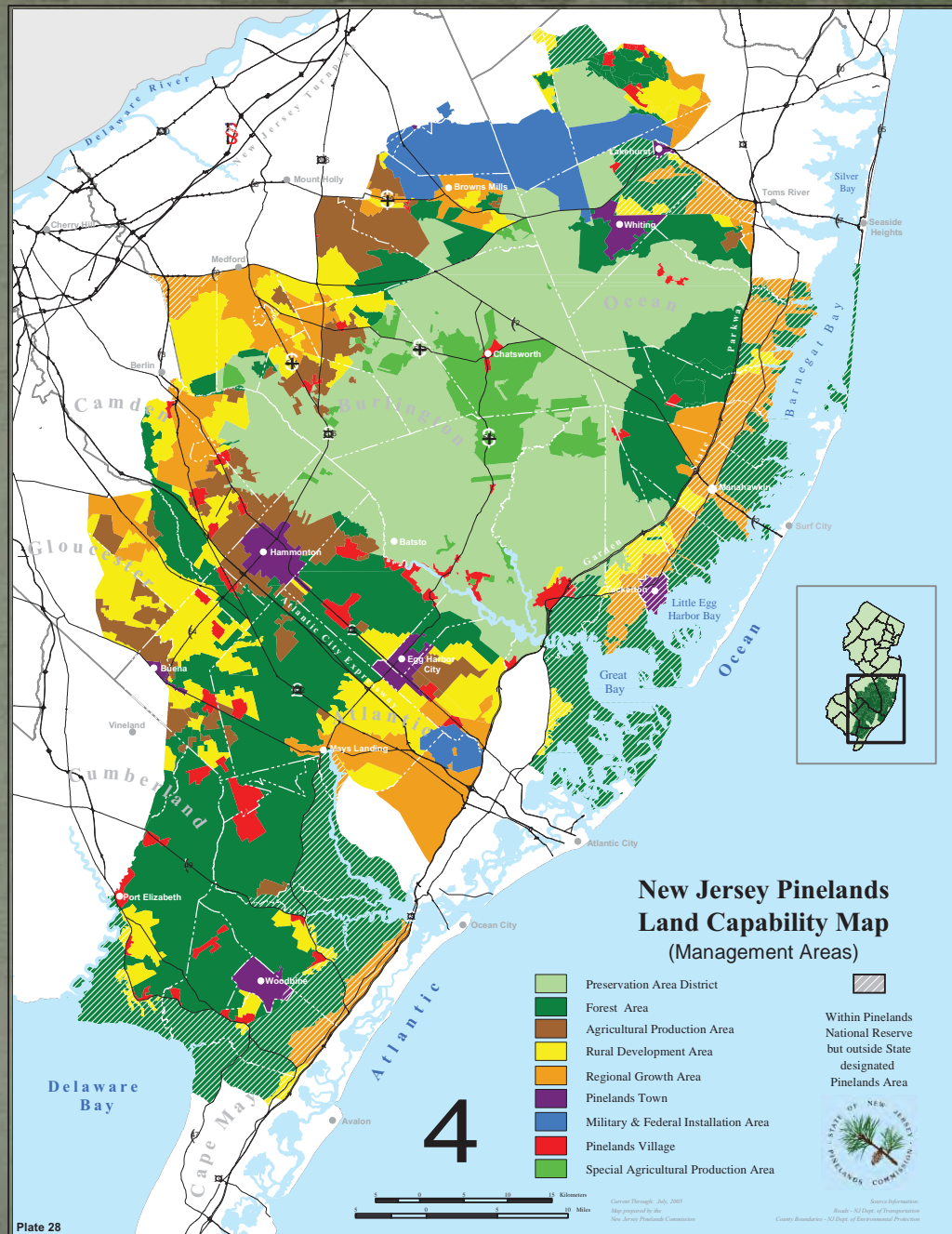












4

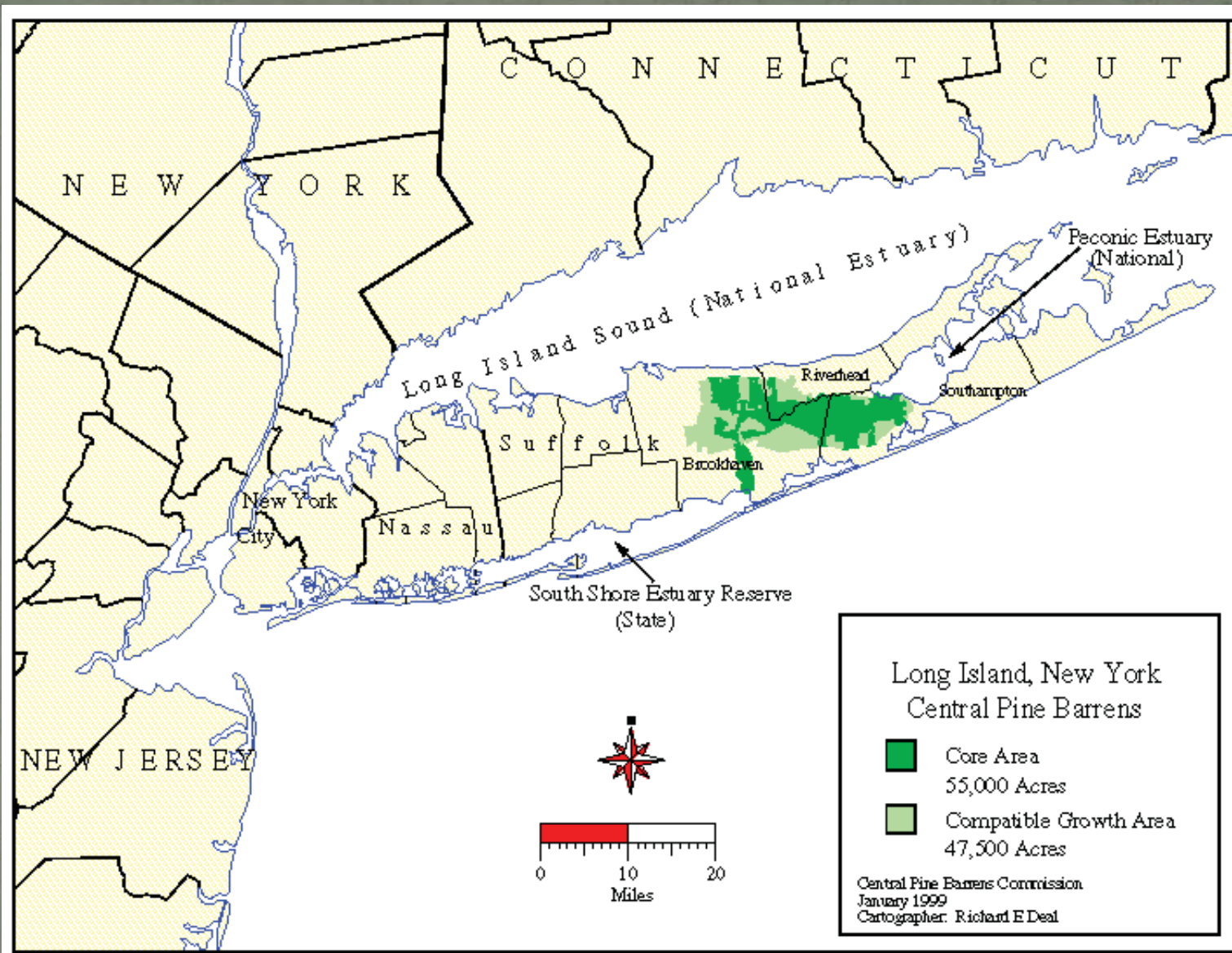
Current Through: July, 2003
Map prepared by the
New Jersey Pinelands Commission

Source Information:
Base: 1:50,000 Scale of Topographic
County Boundaries: NJ Dept. of Environmental Protection













Land Use Map

The Land Use Map Provides a Generalized Picture of the Goals and Policies Contained in the Land Use Element Report. Using Eight Broad Land Use Classifications and Eight Symbols. The Map Presents a Graphic Overview of the General Distribution and Location of Major Land Use Areas and Facilities.



A Tradition of Stewardship
A Commitment to Service

The Land Use Element of The Napa County General Plan

Including the Map was amended by the Napa County Board of Supervisors by Resolution No.

2013.60 on June 04, 2013

Paul Wagner

Paul Wagner
Chair, Board of Supervisors District 1

Mark Lutz

Mark Lutz
Vice Chair, Board of Supervisors District 2

David Olson

David Olson
Board of Supervisors District 3

Neil Smith

Neil Smith
Board of Supervisors District 4

John Galt

John Galt
Board of Supervisors District 5

Attested by: Mary O. O'Neil

Mary O. O'Neil
County Clerk

Legend

- Limited Access Highway
- Major Road
- - - American Canyon ULL
- - - City of Napa RUL
- 1 Landfill - General Plan
- Secondary Road
- Airport
- Railroad
- Airport Clear Zone

General Plan

URBAN

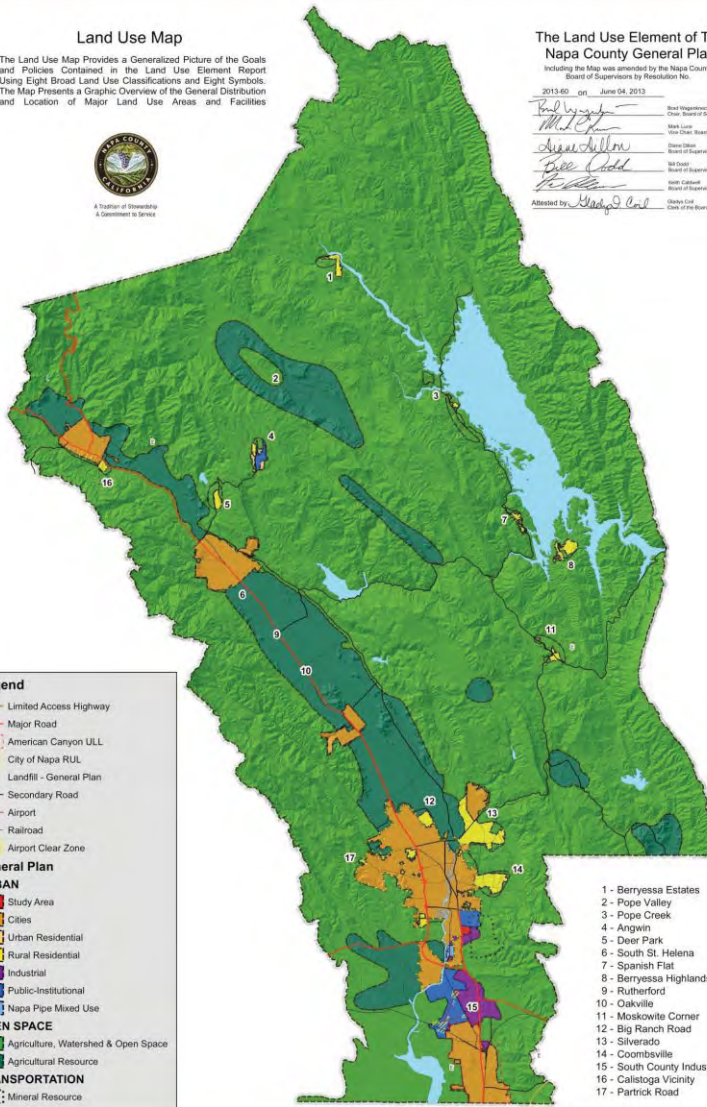
- Study Area
- Cities
- Urban Residential
- Rural Residential
- Industrial
- Public-Institutional
- Napa Pipe Mixed Use

OPEN SPACE

- Agriculture, Watershed & Open Space
- Agricultural Resource

TRANSPORTATION

- Mineral Resource



- 1 - Berryessa Estates
- 2 - Pope Valley
- 3 - Pope Creek
- 4 - Angwin
- 5 - Deer Park
- 6 - South St. Helena
- 7 - Spanish Flat
- 8 - Berryessa Highlands
- 9 - Rutherford
- 10 - Oakville
- 11 - Moskowite Corner
- 12 - Big Ranch Road
- 13 - Silverado
- 14 - Coombsville
- 15 - South County Industrial Areas
- 16 - Calistoga Vicinity
- 17 - Parlick Road

Revised Date: 06/02/13
Historical Datum: NAD 83
CA State Plane Coordinates,
Zone 10 N

Disclaimer: This map was prepared for informational purposes only. No liability is assumed for the accuracy of the data delineated herein.

Napa County Land Use Plan 2008 - 2030

County of Napa



Planning, Building
and Environmental Services

0 0.5 1 2 3 4 Miles















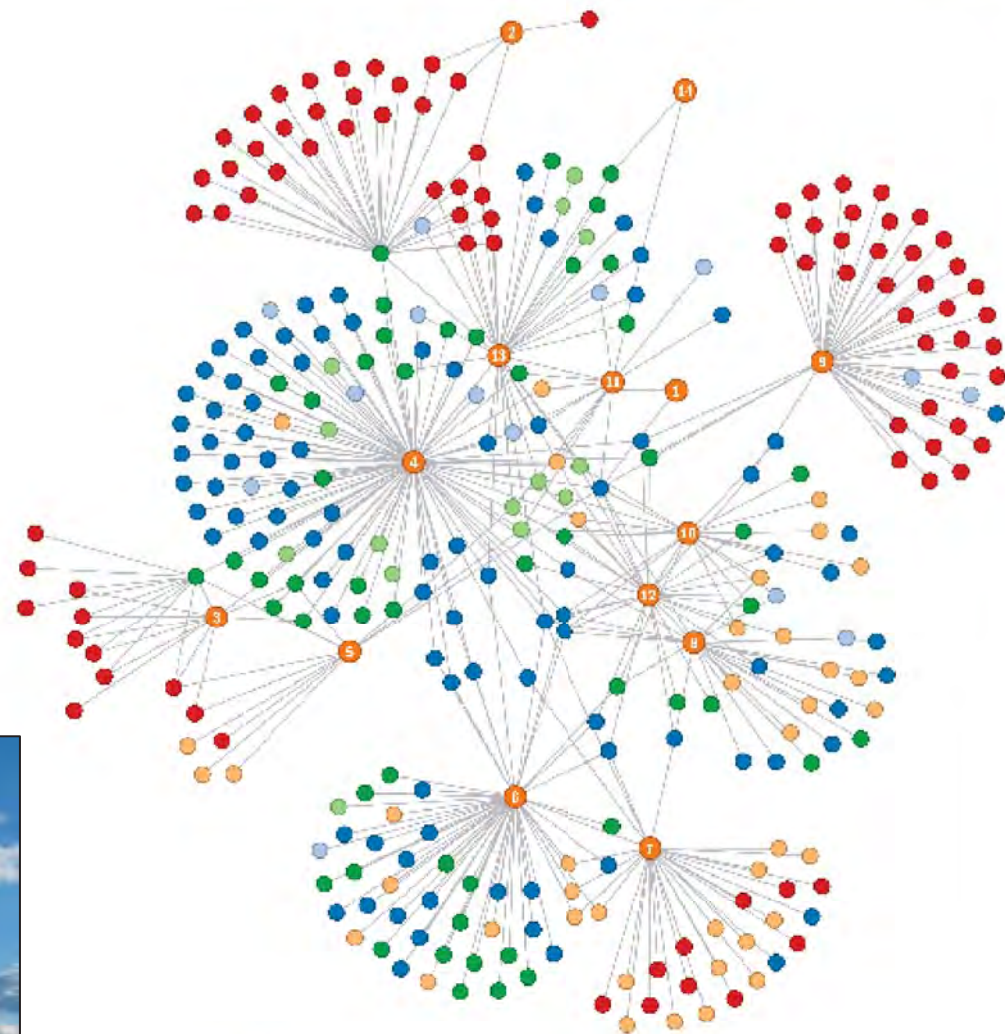






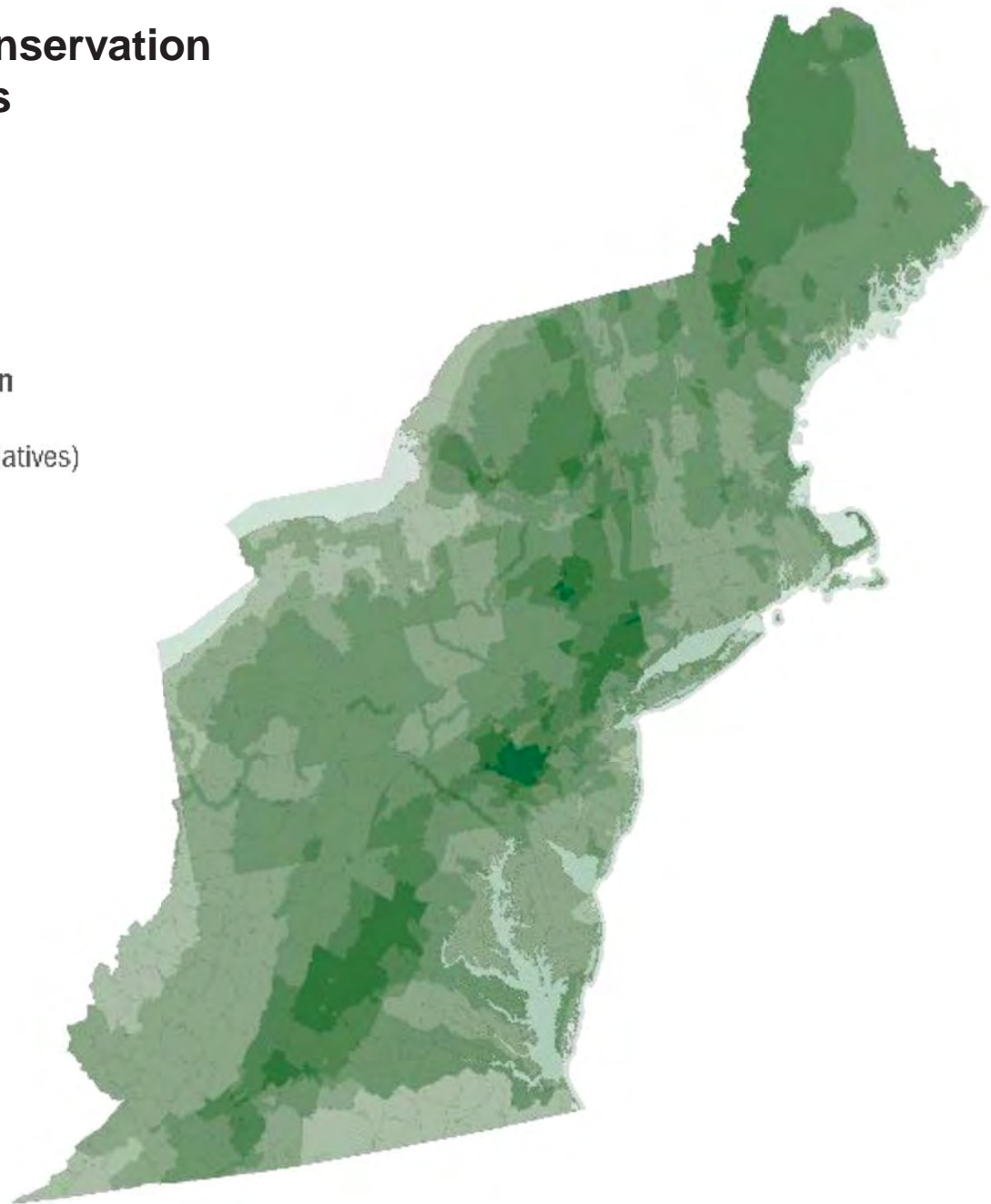
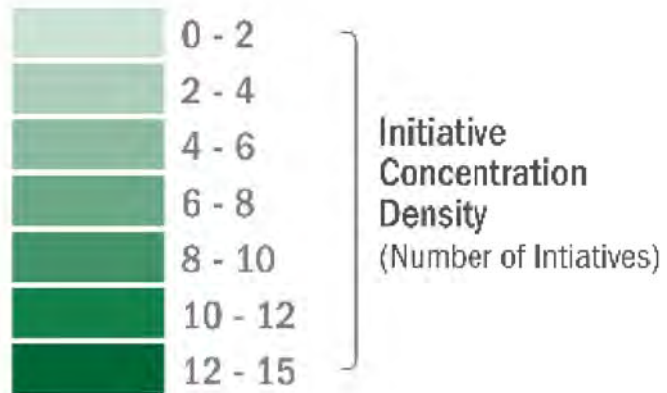
The Conservation Network in the Connecticut River Valley

In the Connecticut River Valley, federal, state, and civic initiatives work with each other as well as with local government and academic institutions.



- Landscape Initiatives
- Towns
- NGOs
- Local/State Government/Regional Commissions
- Federal Government
- Universities
- Land Trusts

Northeast Landscape Conservation Initiatives Concentrations

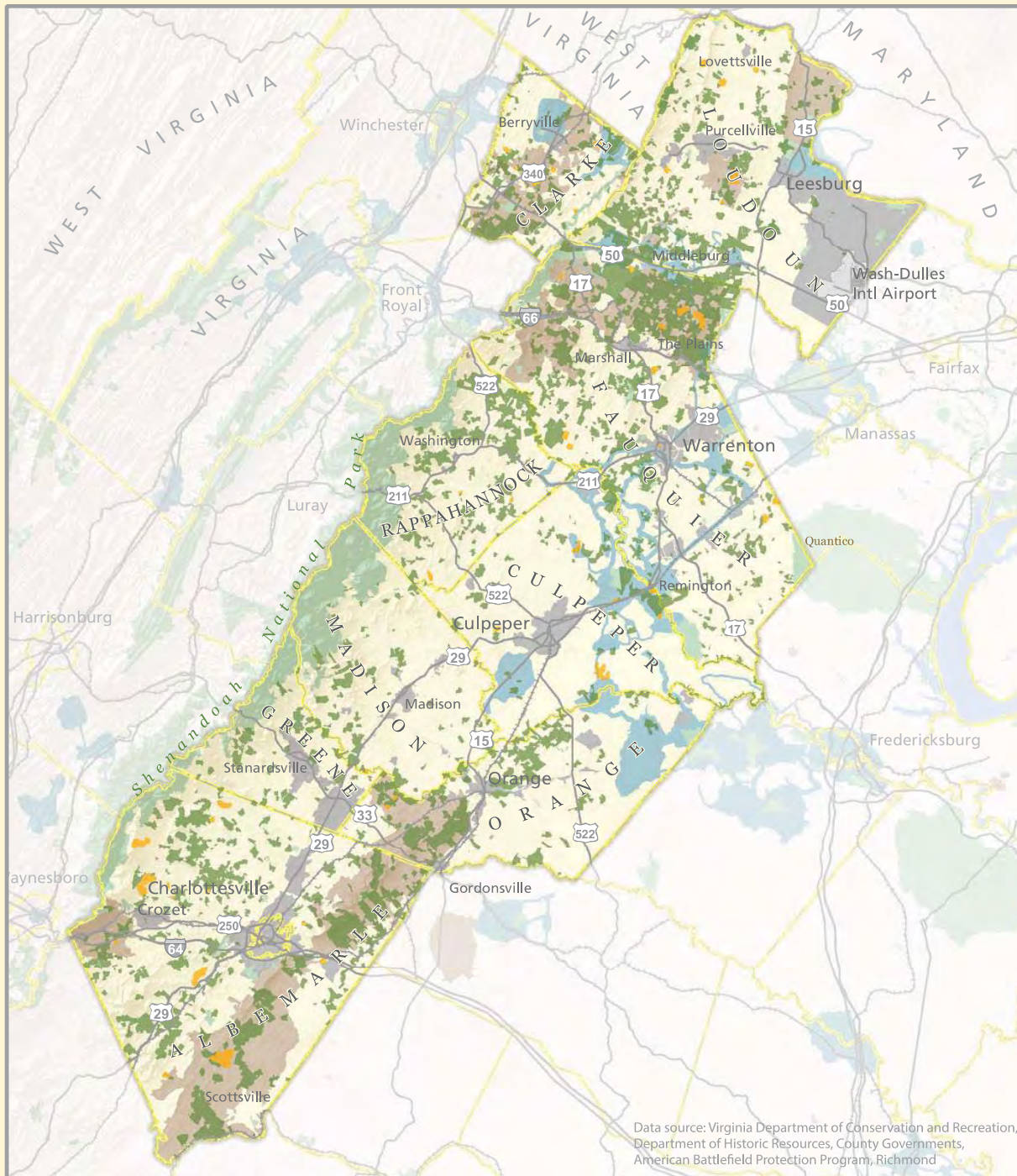


Threats and Tools for Landscape Initiatives By Land Use, Objectives, and Geography

With just a few exceptions, landscape initiatives cite similar threats and use common tools even if their surrounding land use, geographic location, or key objectives differ. The darker the color in the chart, the greater the number of initiatives citing common factors.

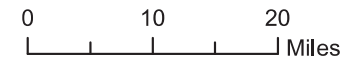
		Factors				Land Use				Selected Objectives				Geography			
		Total Initiatives				Urban (50-100% Developed)				Suburban (20-49% Developed)				Rural (<20% Developed)			
Tools	Total Initiatives	65	10	44	11	60	132	109	67	69	125	63	96	33			
	Education, Outreach, Interpretation, & Visitor Services	145	10	42	93	50	115	86	62	63	108	50	88	26			
	Planning	106	7	32	62	32	86	72	51	45	77	33	66	16			
	Advocacy	98	8	28	58	33	78	68	48	43	73	30	57	21			
	Research, Science, & Monitoring	91	8	25	56	26	76	65	40	28	62	37	55	16			
	Coordination	87	7	28	52	30	67	59	44	40	64	25	63	13			
	Acquisition & Easements	75	1	16	49	30	58	48	26	31	51	20	40	12			
	Technical Assistance	72	3	20	40	27	54	47	34	27	51	24	41	8			
	Grants	63	4	18	28	16	42	34	27	25	40	17	33	9			
	Tourism & Promotion	51	4	13	17	11	16	13	16	22	30	5	28	3			
	Regulatory	40	2	10	20	8	28	25	14	14	22	11	23	3			
	Land Management	47	2	9	23	15	31	23	20	17	25	9	26	4			
	Inventory & Assessment	44	8	14	23	16	38	38	30	21	34	14	30	5			
	Incentives	36	2	4	12	10	13	12	11	12	11	4	13	5			
	Greenway & Trails	34	1	10	10	6	17	15	12	14	18	3	17	2			

Initiative cells are shaded with varying intensity depending on the percent of the total initiatives in the column that selected the specific threat, or tool.



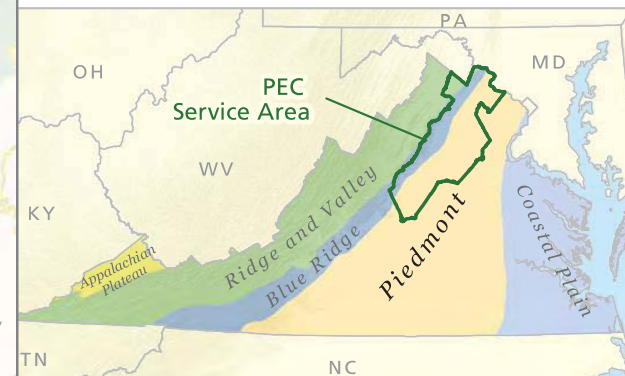
The Piedmont Region

- Conservation Easements
- Easements Recorded in 2014
- Publicly Owned Lands
- Civil War Battlefields
- Historic Districts
- Planned for Growth



Virginia's northern Piedmont is an exceptional place. Located at the foot of the Blue Ridge Mountains, the Piedmont is beloved for its scenic beauty, unparalleled in its significance to America's history, and valuable for its productive family farms, thriving communities and vibrant economy.

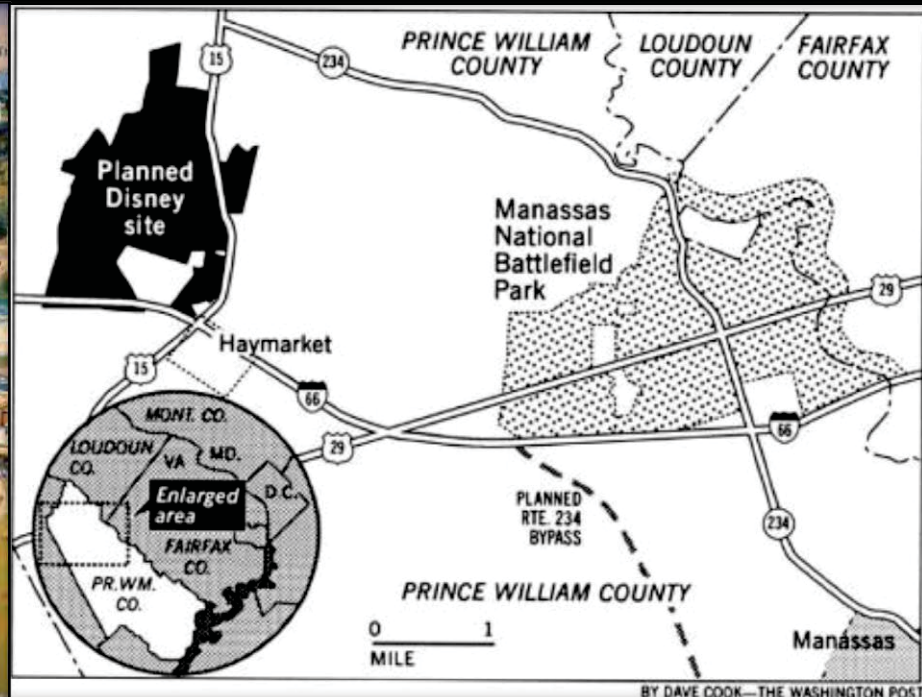
Physiographic Regions of Virginia











BY DAVE COOK—THE WASHINGTON POST









Thank you!