



hill **country** **alliance**



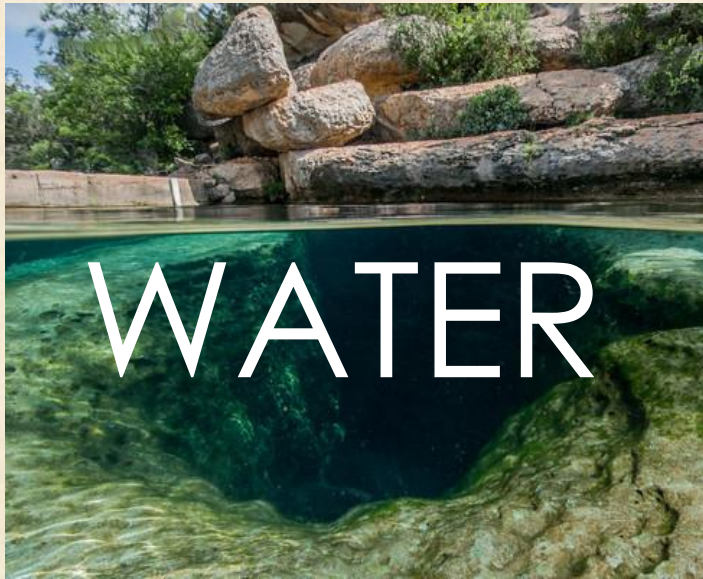




hill country alliance

Landscape Scale Collaborative Networking

Katherine Romans
Hill Country Alliance Leadership Summit
September 21, 2017



LAND



- Travis County Bond Process- **\$15 mill for Conservation Easements**
- Worked with more than **80 landowners in the Pedernales Basin** on riparian stewardship and invasive species control
- Convened the land trusts working in the Hill Country, maintained the **All Conserved Lands Map** and hosting **Conservation Easement Workshops**

WATER



- Completed a **Guadalupe River Literature Review** for the Guadalupe River Association
- Creating a **Water Law & Policy Paper** in support of the burgeoning Headwaters Initiative
- Hosted our **7th Annual Rainwater Revival** and raised \$4000 in funds for school grant program

COMMUNITY



- Joined League of Women Voters Comal Area + Greater Edwards Aquifer Alliance in hosting 2-day **Planning for Growth in Comal County**
- Hosted a Rural Planning workshops in **Bandera and Llano**
- **Convened corridor city officials** to discuss the need to work collaboratively with the Hill Country

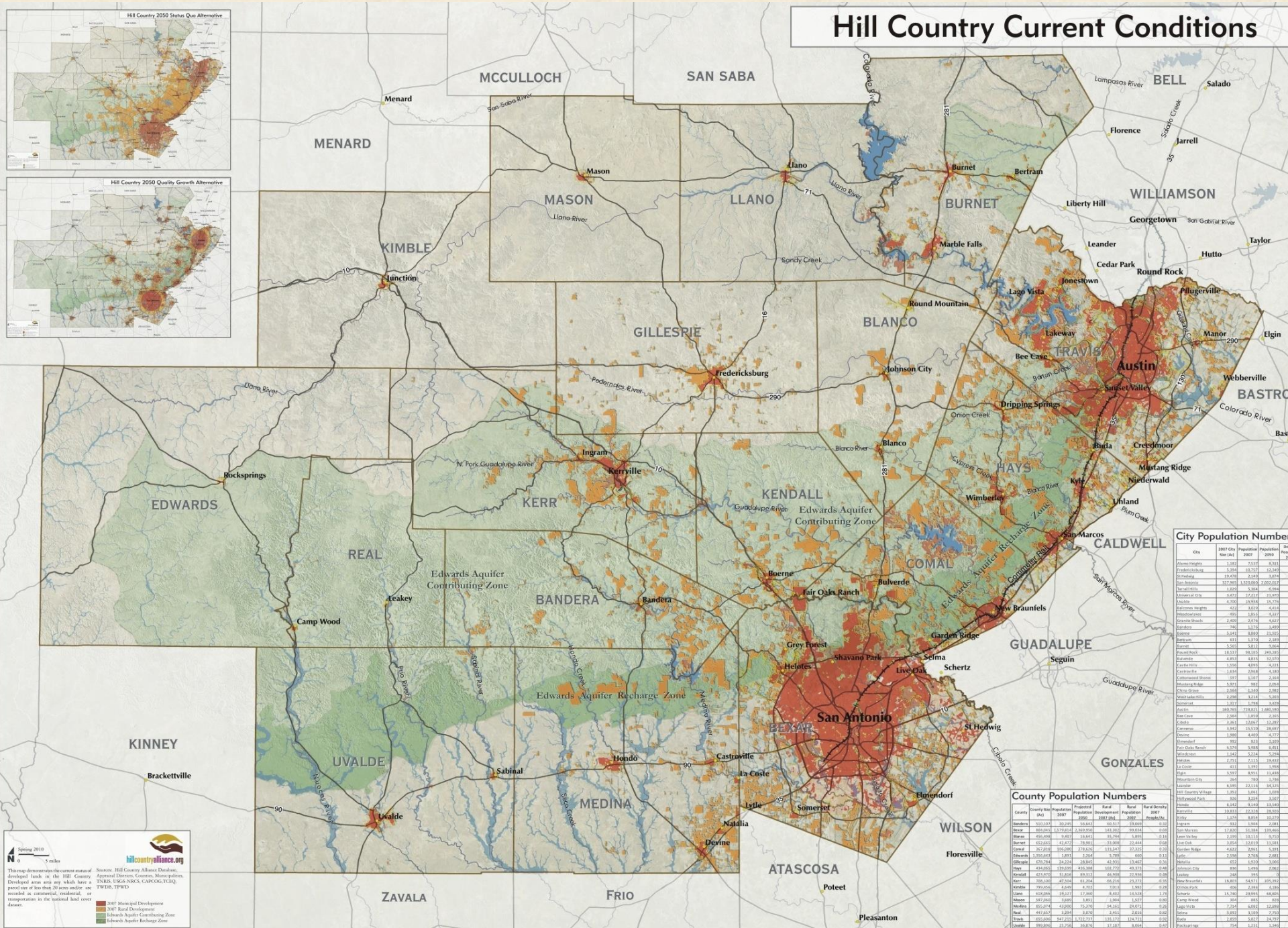
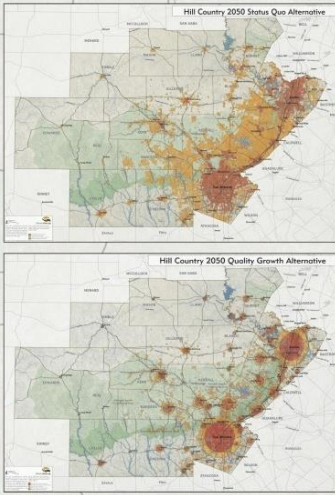
NIGHT SKY



- Partnered with City of Fredericksburg for the first ever **Hill Country Dark Sky Conference**
- Saw ordinance pass in **Johnson City** and resolutions in **Bandera** and **Kerrville**
- Reinvigorated our **Night Sky Business Recognition Program** in Leakey and Wimberley
- Participated in **San Antonio's dark sky stakeholder committee** to review its outdoor lighting ordinance

And yet....

Hill Country Current Conditions



City Population Numbers

City	2007 City Size (sq)	Projected 2007	Projected 2050	Density
Alamo Heights	3,367	7,957	9,861	2.93
Anderson Mill	2,600	28,727	32,480	12.5
St. Matthew	13,670	2,450	3,870	0.28
San Antonio	377,353	1,020,000	2,000,000	5.35
Taylor	1,070	5,354	6,094	5.6
Universal City	2,672	12,217	21,370	7.99
Wentzville	4,706	20,950	29,720	6.3
Belton	482	3,050	4,450	9.2
Fredericksburg	490	3,010	4,530	9.2
Georgetown	2,400	26,716	46,277	19.28
Blanco	3,540	1,310	1,490	0.39
Boerne	481	3,170	3,180	6.59
Burnet	5,500	3,810	3,840	0.69
Flower Branch	18,537	88,151	249,385	13.46
Groesbeck	4,810	4,810	12,270	2.55
Guadalupe	3,100	4,900	6,620	2.13
Conroe	2,834	2,848	3,180	1.12
Georgetown	880	3,870	5,480	6.23
McCombs Bridge	5,931	821	2,070	0.35
Chimney Rock	2,798	3,214	3,250	1.16
San Marcos	280,756	278,841	1,046,000	3.71
Somerset	3,177	5,790	6,520	2.05
Waco	260,766	278,841	1,046,000	3.71
Blue Cave	2,064	3,870	3,365	1.63
Castroville	5,700	12,000	13,200	2.28
Converse	3,842	15,530	18,087	4.70
Dominion	3,868	4,870	4,777	1.23
Fredericksburg	490	4,020	5,140	10.49
Four Oaks Ranch	4,574	5,080	6,951	1.52
Marble Falls	3,416	3,270	3,290	0.94
Iranville	2,751	1,110	1,912	0.62
La Compe	411	1,370	1,950	4.74
St. Charles	3,670	8,920	11,440	3.12
Marathon City	764	700	1,748	2.28
Leander	5,200	23,816	32,480	6.23
Hill Country Village	1,932	1,931	1,188	0.61
International Park	6,145	6,145	11,930	1.94
Barrville	1,033	12,230	18,920	18.32
Del Rio	18,460	24,670	30,900	1.68
San Marcos	932	3,004	2,081	0.22
San Antonio	17,100	51,900	130,000	7.57
Universal City	2,150	10,100	15,400	7.11
San Oak	3,974	12,610	13,981	3.52
Del Rio	4,410	5,200	5,200	1.18
Del Rio	2,008	2,700	2,881	1.43
Del Rio	62	4,200	3,300	53.0
Del Rio	830	1,000	1,000	1.20
Del Rio	481	891	911	1.87
New Braunfels	13,400	34,670	55,990	4.18
Comstock	406	2,820	3,100	7.63
Del Rio	15,700	20,900	18,000	1.15
Camp Wood	504	8,300	8,200	16.26
Live Oak	7,110	6,800	12,800	1.81
Del Rio	3,870	3,870	7,990	2.06
Bluff	2,870	3,877	24,797	8.63
Fredericksburg	764	3,870	3,870	4.67

County Population Numbers

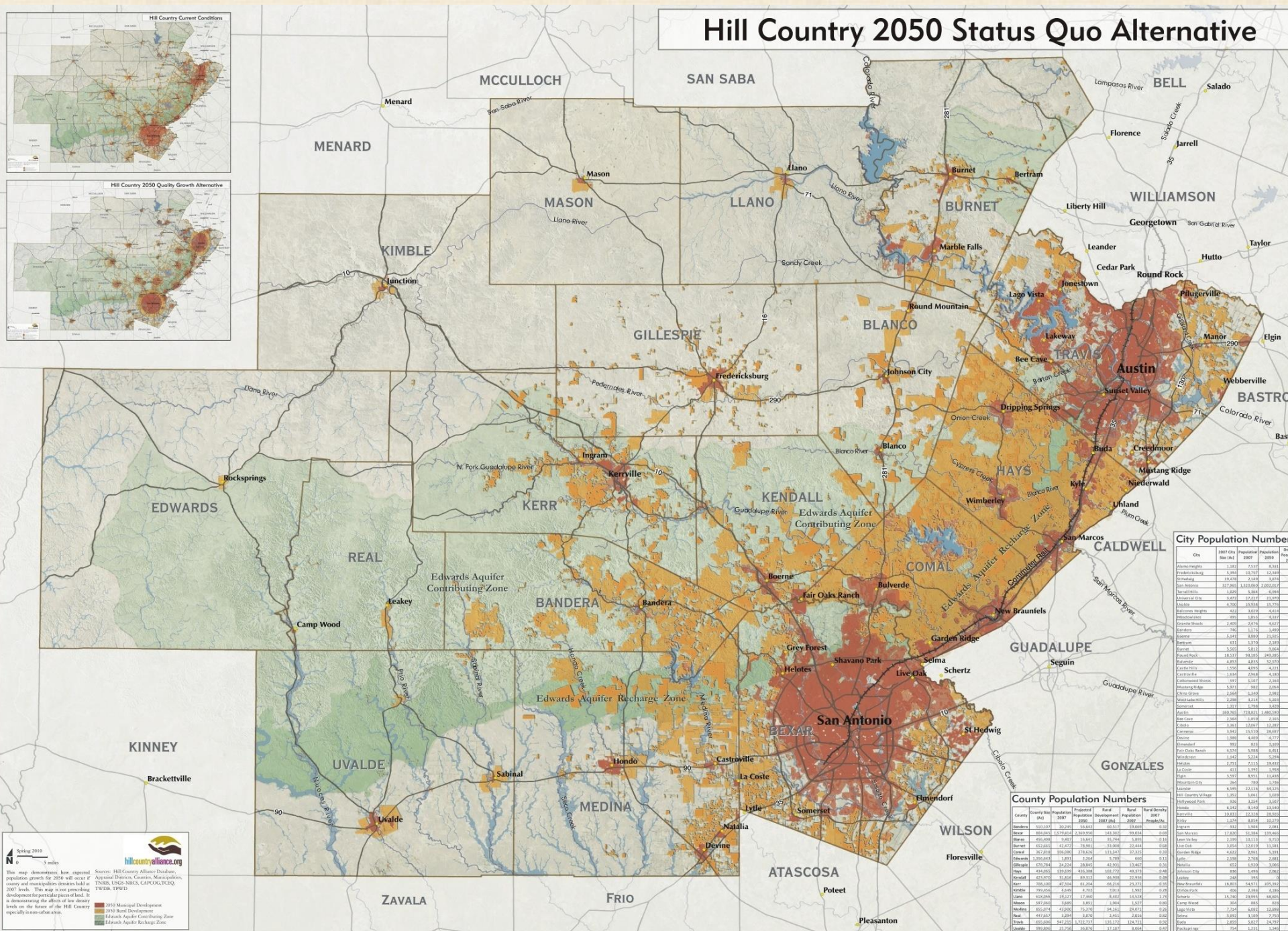
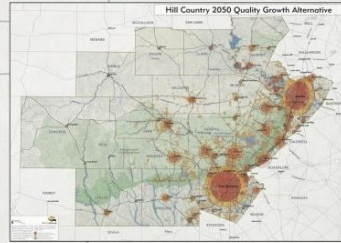
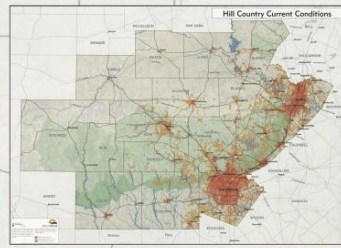
County	County Size (sq miles)	Population 2007	Projected Population 2007	Projected Population 2050	Population Density 2007	Population Density 2050
Brewster	313,107	30,345	34,642	60,317	0.10	0.20
Brewster	663,442	1,070,016	1,080,181	1,154,700	1.61	1.74
Brewster	663,442	1,070,016	1,080,181	1,154,700	1.61	1.74
Burnet	952,083	62,472	78,985	131,090	0.07	0.14
Comal	382,416	100,000	171,638	318,867	0.26	0.83
Edwards	1,196,643	3,981	2,394	5,700	0.00	0.13
Gilmer	478,704	28,124	29,167	62,001	0.06	0.13
Hays	424,085	139,689	418,188	559,771	0.33	1.32
Hendrick	453,570	31,838	99,333	145,200	0.07	0.32
Hill	790,206	49,094	61,264	162,261	0.06	0.21
Kansas	799,404	4,440	4,702	2,011	0.00	0.00
Kerr	553,000	103,117	112,001	246,401	0.20	0.44
Live Oak	387,600	8,689	8,881	18,944	0.02	0.05
Medina	851,074	43,000	75,000	145,000	0.05	0.17
Morales	447,073	1,004	1,004	2,410	0.00	0.00
Travis	850,000	847,135	1,022,737	1,131,111	1.02	1.32
Uvalde	660,804	31,704	36,824	57,800	0.05	0.09

Spring 2010
 0 5 miles

 Sources: Hill Country Alliance Database, Appraisal Districts, Counties, Municipalities, TFWB, USGS, NCS, CAPCOG, TFCO.
 Legend:
 Municipal Development
 Rural Development
 Edwards Aquifer Contributing Zone
 Edwards Aquifer Recharge Zone

This map demonstrates the current status of developed lands in the Hill Country. Developed areas may include some parcels of less than 20 acres and/or are not shown in commercial, residential, or transportation in the historical land cover data.

Hill Country 2050 Status Quo Alternative



City Population Numbers

City	2007 City Size (sq)	Projected 2050	2050 Density
Austin Heights	1,847	2,517	8.21
Bastrop	1,300	1,850	1.42
Bee Cave	1,300	1,400	1.08
Bertram	1,800	2,300	1.28
Buda	1,200	1,800	1.50
Comal	2,800	3,500	1.25
Dripping Springs	1,200	1,800	1.50
Floresville	1,200	1,800	1.50
Fredericksburg	2,000	2,800	1.40
Georgetown	1,200	1,800	1.50
Hutto	1,200	1,800	1.50
Johnson City	1,200	1,800	1.50
Marble Falls	1,200	1,800	1.50
Marble Falls	1,200	1,800	1.50
Mercedes	1,200	1,800	1.50
New Braunfels	1,200	1,800	1.50
Palmiton	1,200	1,800	1.50
San Antonio	1,200	1,800	1.50
Schertz	1,200	1,800	1.50
St. Hedwig	1,200	1,800	1.50
St. Louis	1,200	1,800	1.50
St. Soter	1,200	1,800	1.50
St. Vincent	1,200	1,800	1.50
St. Charles	1,200	1,800	1.50
St. Ignace	1,200	1,800	1.50
St. Joseph	1,200	1,800	1.50
St. Margaret	1,200	1,800	1.50
St. Mary's	1,200	1,800	1.50
St. Patrick	1,200	1,800	1.50
St. Raphael	1,200	1,800	1.50
St. Rose	1,200	1,800	1.50
St. Therese	1,200	1,800	1.50
St. Vincent	1,200	1,800	1.50
St. Ignace	1,200	1,800	1.50
St. Joseph	1,200	1,800	1.50
St. Margaret	1,200	1,800	1.50
St. Mary's	1,200	1,800	1.50
St. Patrick	1,200	1,800	1.50
St. Raphael	1,200	1,800	1.50
St. Rose	1,200	1,800	1.50
St. Therese	1,200	1,800	1.50

County Population Numbers

County	County Size (sq miles)	2007 Population	2050 Population	2050 Density
Blanco	1,313	24,944	30,116	22.92
Burnet	2,014	14,885	18,116	9.00
Comal	1,189	37,384	45,116	37.93
Davies	1,107	30,545	36,617	33.07
Hays	1,019	27,314	33,116	32.59
Kerr	1,292	31,812	38,116	29.49
Mason	1,107	24,944	30,116	27.19
Medina	1,200	28,116	34,116	28.43
Real	1,107	24,944	30,116	27.19
Travis	1,019	27,314	33,116	32.59
Willamson	1,107	24,944	30,116	27.19

Spring 2010
 0 1 2 3 miles
 Source: Hill Country Alliance Database, Aerial Photos, Census, Manpower, DNR, USGS-NMCC, CAPLOC, FERC, TRB, TPWD
 This map demonstrates low expected population growth for 2050 will occur if county and municipal density levels at 2007 levels. This map is not predicting development for parts of the Hill Country especially in non-urban areas.

2050 Municipal Development
 2050 Rural Development
 Edwards Aquifer Contributing Zone
 Edwards Aquifer Recharge Zone

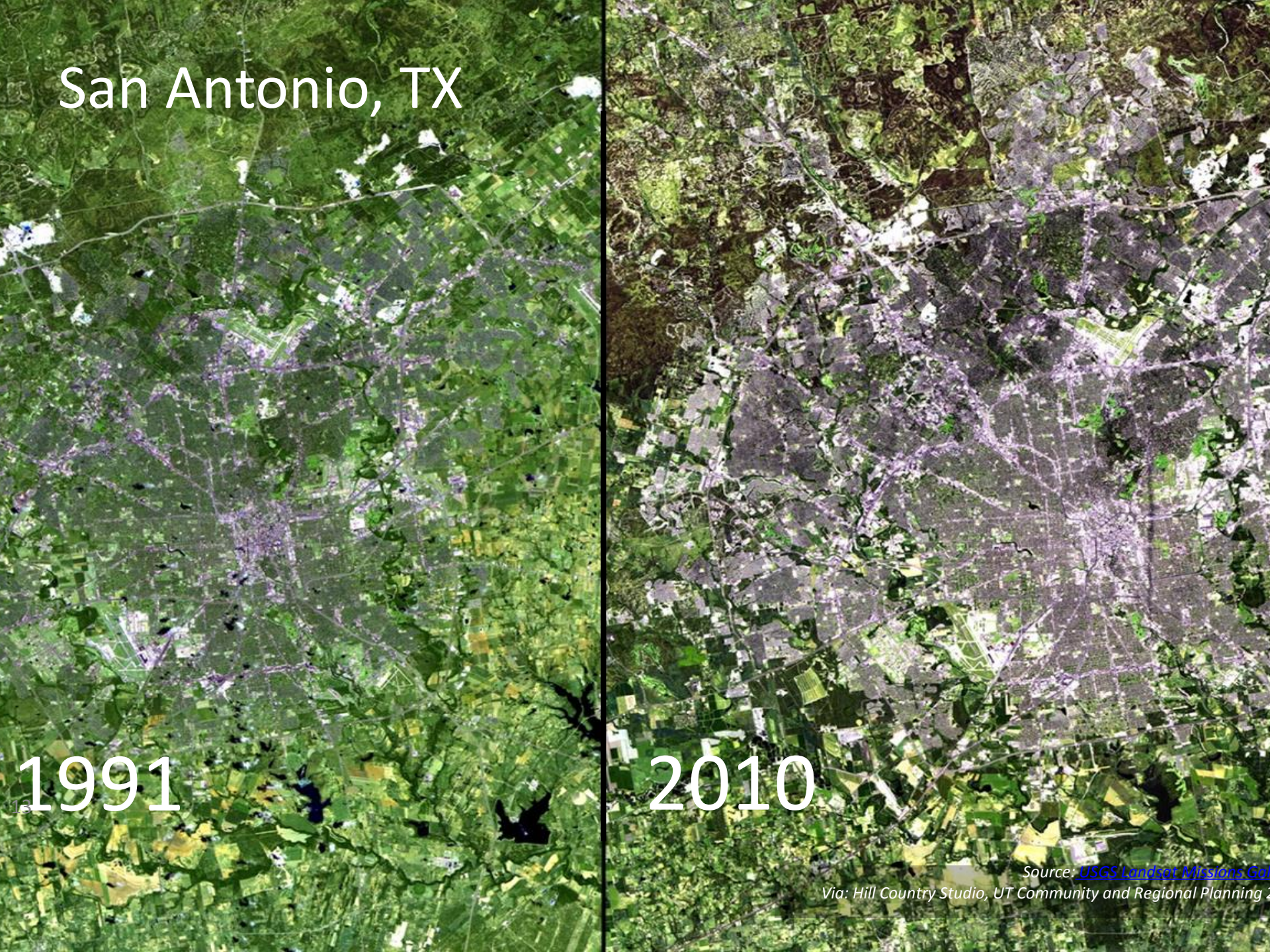
Hill Country Alliance.org

San Antonio, TX

1991

2010

Source: [USGS Landsat Missions](#)
Via: Hill Country Studio, UT Community and Regional Planning



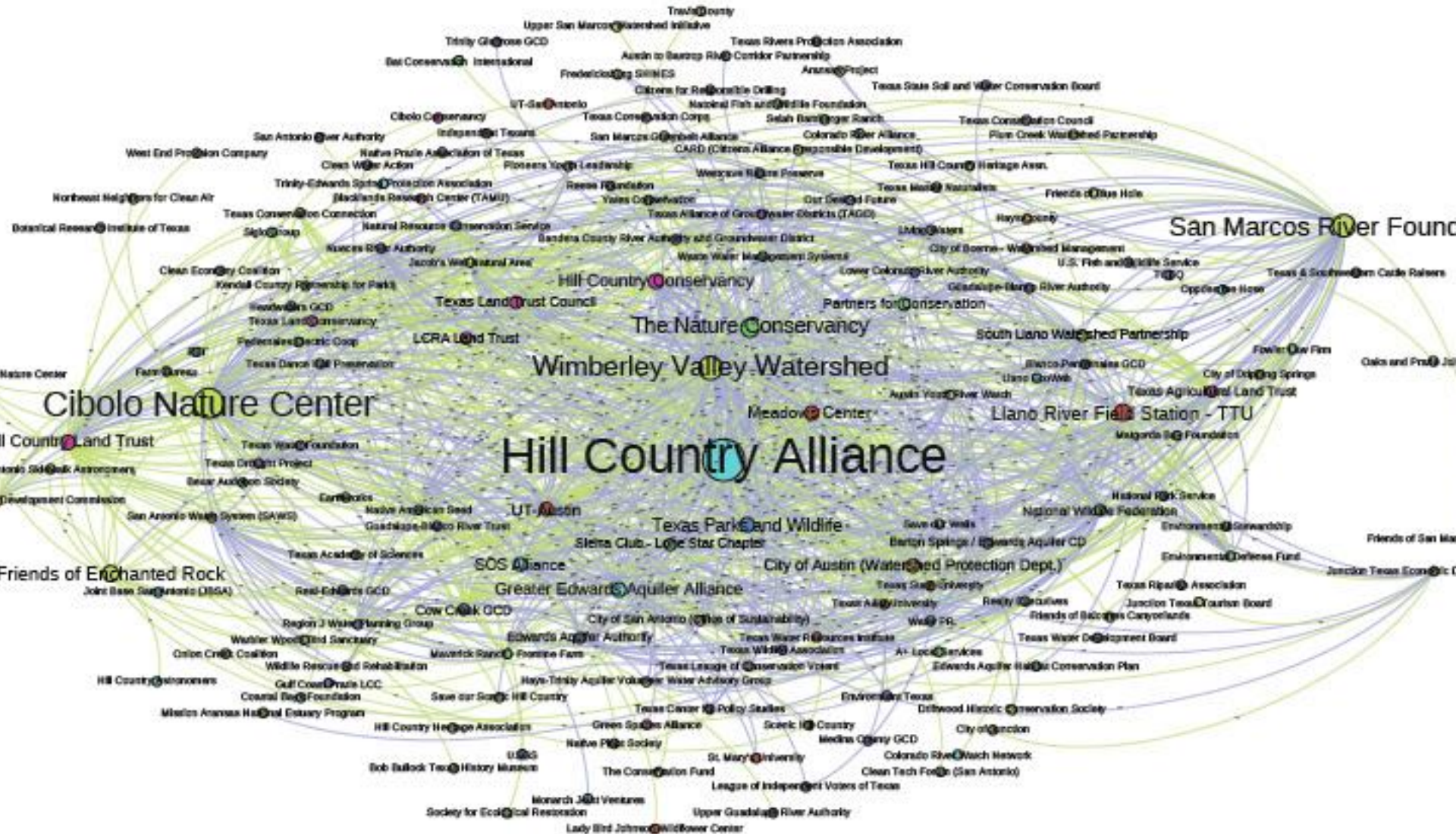


“The bottom line is, we gotta change the way we grow. We cannot keep doing things the same old way. We can’t keep falling back on the familiar, the easy, and the tired old phrase, *“But we’ve always done it this way.”*”

-Bill Neiman,
Native American Seed



HILL COUNTRY CONSERVATION NETWORK



SHARED VISION AND GOALS



Hill Country Conservation Network

Strategic Plan

Working Draft

July 18, 2017

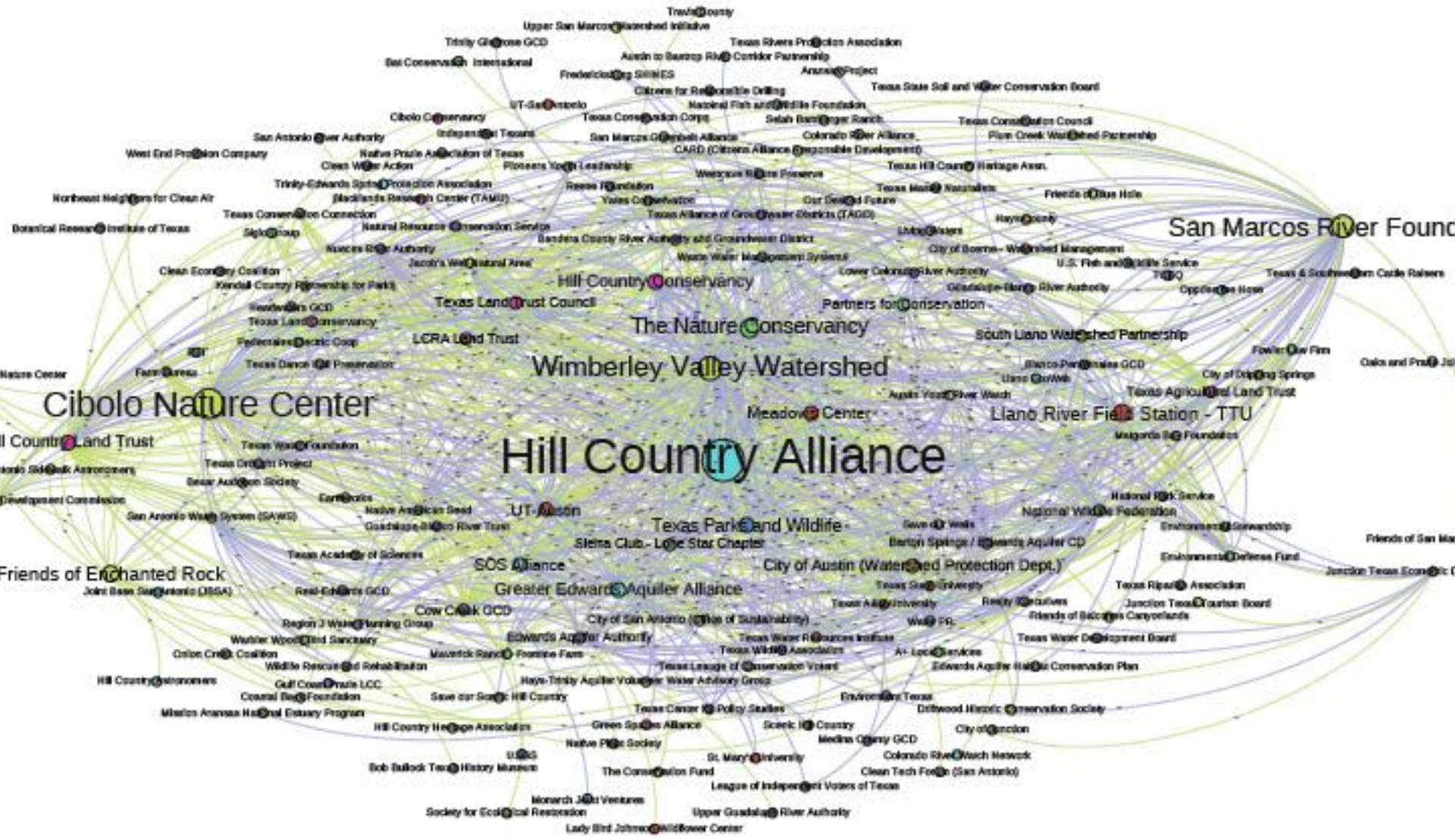
SCALED FUNDING



Regional Conservation Partnership Program

\$10 Million in NRCS funding for Hill Country Region

LOOKING AHEAD



LOOKING AHEAD

BIGGER. BETTER. MORE SOCIAL!



**RAINWATER REVIVAL
+ HILL COUNTRY LIVING
FESTIVAL**

**SAT | NOV 4 | 10AM TO 5PM
DRIPPING SPRINGS RANCH PARK**



/rainwaterrevival



@RainwaterRev



rainwaterrevival.com



**#RainwaterRevival
#HillCountryLiving**

FOLLOW. SHARE. BE THERE.



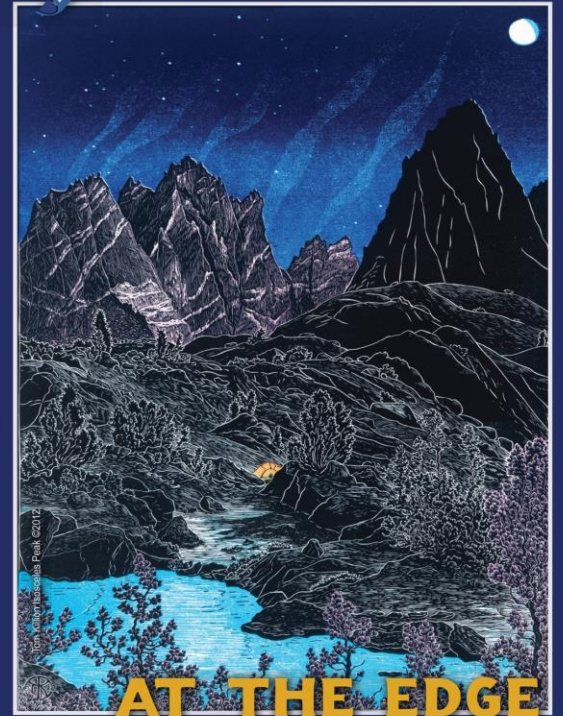
WILD & SCENIC[®] FILM FESTIVAL

WHERE ACTIVISM GETS INSPIRED

**Join Us!
Sep 28
2017**

**6:30pm
Schreiner
University
CCAC Ballroom
Kerrville, TX
8 Films!**

**Door prizes,
speakers
and fun!**



HOSTED BY:



SPONSORED BY:



TICKETS \$5 HILLCOUNTRYALLIANCE.ORG/WILDANDSCENIC





hill **country** **alliance**

BREAKOUT CONVERSATIONS



WRAP UP 4:20-4:30PM



hill **country** **alliance**

“Yes the Hill Country
is beautiful—But
remind them that
it’s going to take
some care, and
passion, and love,
and also **FUN!**”

Ira Yates,
HCA Board Emeritus

