

Nueces Basin headwater streams are noted for their pristine waters



House Bill 817 and Senate Bill 655 will protect these waters.

State Representative Tracy King has filed HB 817, and State Senator Pete Flores filed companion bill SB 655, to prohibit discharge of treated wastewater into the headwater streams of the Nueces River Basin. (See map on back.)

This localized legislation has received broad-based support for the reasons below:

- Elected leaders and citizens in this region recognize the intrinsic value these pristine waters bring to the local environment and economy. Three of the rivers in this region are designated by the Texas Legislature as being ecologically unique.
- The streams of the Nueces Basin headwaters support the region's visitor- and recreation-based economy.
- These streams carry little or no nutrients, such as nitrogen and phosphorus.
- Even highly treated wastewater carries levels of nitrogen and phosphorus that exceed the natural levels found in these Nueces Basin headwater streams.
- The addition of nutrients from treated wastewater discharged to these streams will cause water quality degradation.
- There are alternatives to discharging treated wastewater to these waters, including land application of the effluent by irrigation and reuse.
- For this rural, sparsely populated region, the prohibition of wastewater discharges should be the norm, until the Texas Legislature determines otherwise.

HB 817/SB 655 prohibit the discharge of treated wastewater into streams in the Nueces Basin portion of the Edwards Aquifer Contributing Zone.

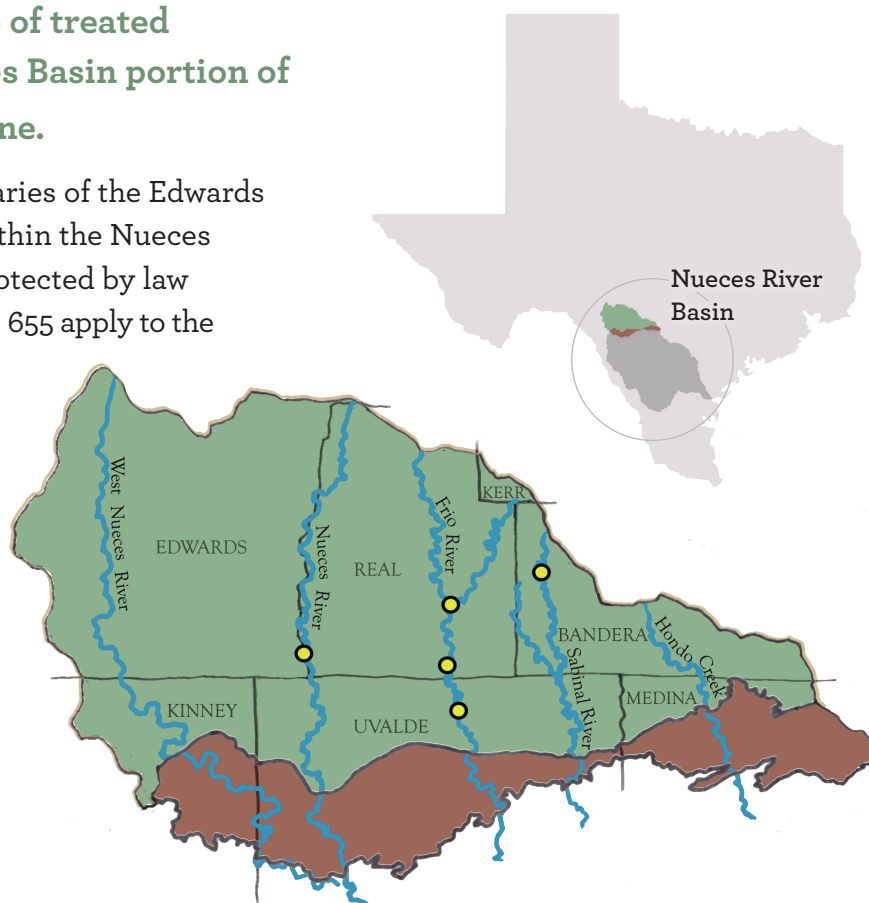
The map below shows the geographic boundaries of the Edwards Aquifer Contributing and Recharge Zones within the Nueces River Basin. The Recharge Zone is already protected by law from treated wastewater discharge. HB 817/SB 655 apply to the Contributing Zone only.

Five current permitted wastewater treatment facilities are shown in the Contributing Zone. All use land application for disposal of treated effluent; none discharge to a stream.

- Treatment Facilities
 - City of Camp Wood
 - Alto Frio Baptist Encampment
 - Leahey Regional Wastewater System
 - Garner State Park
 - Lost Maples State Natural Area

■ Edwards Aquifer Contributing Zone

■ Edwards Aquifer Recharge Zone



House Bill 817 and Senate Bill 655 need your support.

We encourage you to...



Share this information
with your neighbors.



Communicate
your support with
organizations to
which you may belong.



Ask legislators
you know, or who
serve you, to support
HB 817/SB 655.

You can look up, read, and follow HB 817 and SB 655 at capitol.texas.gov



The Nueces River Authority is a government agency created by the Texas Legislature in 1935 with broad authority to protect, preserve and develop water resources. *Nueces-RA.org*