

Lights Out, Texas!

What is Lights Out Texas

Lights Out Texas is a campaign of education, awareness, and action that focuses on turning out lights at night during the Spring and Fall migrations to help protect the billions of migratory birds that fly over Texas annually.

Goals:

- Increase statewide participation in Lights Out Texas at the business, local official, municipal, and community levels
- Reduce migratory bird mortality
- Coordinate local volunteer efforts to collect and report data

Why Are Birds Important

Birds provide:

- ecosystem services,
- act as benchmarks for environmental health,
- increase livability,
- and connect people of all ages and abilities to the natural world.

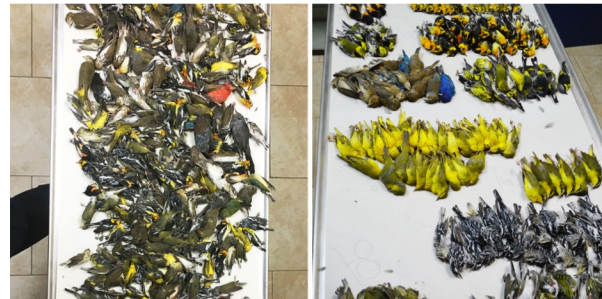
Birds also support the Texas economy. In the Rio Grande Valley alone, Texas A&M found that nature tourism – which is dominated by bird watching – contributes:

- \$300 million
- 4,407 full and part-time jobs annually

How Did Lights Out Texas Start?

Lights Out Texas first began in Texas in 2017 with Houston Audubon and commercial building American National Insurance Company in Galveston following a major bird collision event that killed near 400 birds in a single night at that building.

Beginning in 2020, Lights Out Texas was modeled at a city-wide scale in Dallas, led by the Cornell Lab of Ornithology and BirdCast, Texas Conservation Alliance, The Perot Museum of Nature and Science, and the Dallas Zoo, as well as Texan by Nature helping with outreach, before growing to an effort spanning cities all across Texas in Spring 2021 with the support of additional partners.



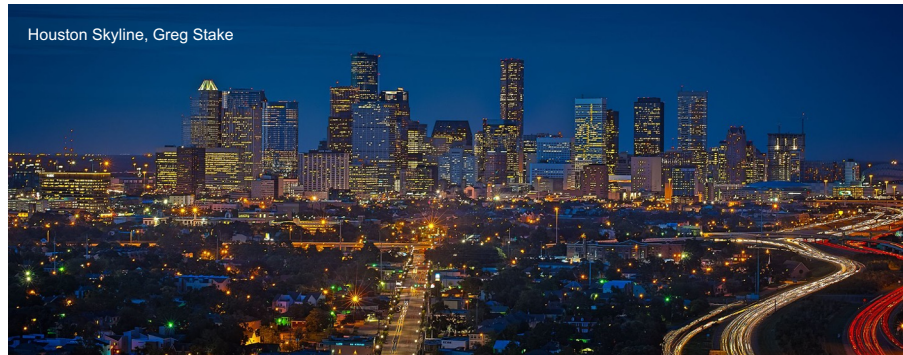
DANGEROUS SKIES:

Estimated Annual Mortality from Collision Threats to Birds



The Problem Lights Out Texas Addresses

Houston is ranked #2 of the 125 largest US cities for light pollution exposure risks to nocturnally migrating birds



The **Dallas-Fort Worth** metro area is ranked #3 of the 125 largest US cities for light pollution exposure risks to nocturnally migrating birds



What is Lights Out Texas

Lights Out Texas is a campaign of education, awareness, and action that focuses on turning out lights at night during the Spring and Fall migrations to help protect the billions of migratory birds that fly over Texas annually.

Goals:

- Increase statewide participation in Lights Out Texas at the business, local official, municipal, and community levels
- Reduce migratory bird mortality
- Coordinate local volunteer efforts to collect and report data

Lights Out Texas Partners - Founding and Coordinating Organizations

- The Cornell Lab of Ornithology
- Texas Conservation Alliance
- Perot Museum of Nature and Science
- Biodiversity Research and Teaching Collections, Texas A&M University
- Houston Audubon
- Texas Parks and Wildlife Department Nature Trackers
- Texan by Nature
- Colorado State University
- University of Massachusetts Amherst



Lights Out Texas Partners - Supporting Organizations

- *Austin & Central Texas*
 - City of Austin, Office of Sustainability
 - City of Dripping Springs
 - Hill Country Alliance
 - Travis Audubon
 - Travis County
- *Dallas Fort Worth & North Texas*
 - Acton Nature Center
 - City of Arlington
 - City of Dallas, Mayor's Office
 - City of Cedar Hill
 - Dallas Zoo
 - Dogwood Canyon Audubon Center
 - Ellis County Master Naturalists
 - Fort Worth Museum of History and Science
 - Friends of Fort Worth Nature Center
 - Trinity River Audubon Center
 - University of Texas at Arlington
- *Houston & Gulf Coast*
 - City of Houston
 - City of Galveston
 - Gulf Coast Bird Observatory
 - The Houston Museum of Natural Science
- *San Antonio*
 - Bexar Audubon Society
 - Mitchell Lake Audubon Center
 - The Witte Museum
- *West Texas*
 - Big Bend Conservation Alliance
 - El Paso Trans Pecos Audubon Society
 - University of Texas at El Paso
- *Statewide*
 - Audubon Texas
 - Defenders of Wildlife
 - The Nature Conservancy
- *National*
 - American Bird Conservancy
 - Audubon
 - National Wildlife Federation

When Are Birds Migrating Through Texas?

Spring Migration: ~ March 1 - June 15

- Peak Migration: ~April 19 - May 7
- 1 of every 3 birds migrating through the U.S. in Spring passes through Texas

Fall Migration: ~ August 15 - November 30

- Peak Migration: ~ September 5 - October 29
 - 1 of every 4 birds migrating through the U.S. in Fall passes through Texas

**= AROUND ONE BILLION BIRDS TRAVEL THROUGH TEXAS EACH
MIGRATION SEASON**



LIGHTS OUT FOR BIRDS

11pm - 6am

Where We Are Now & Success to Celebrate

In 2021, Texan by Nature collaborated with these leading organizations and many others across the state to facilitate Lights Out Texas at the statewide level in order to standardize the approach to messaging, communication, and volunteer efforts across all Texas organizations.

Success from the 2021 Spring Migration Season

- The cities of Arlington, Cedar Hill, Dallas, Dripping Springs, Fort Worth, Galveston, Houston, and Travis County made Lights Out Texas proclamations
- Countless businesses across Texas made commitments to go lights out
- 170+ volunteers contributed 1,200+ volunteer hours to document bird casualties in cities across Texas to better understand bird-build collisions and bird migration dynamics

How To Get Involved In Lights Out Texas

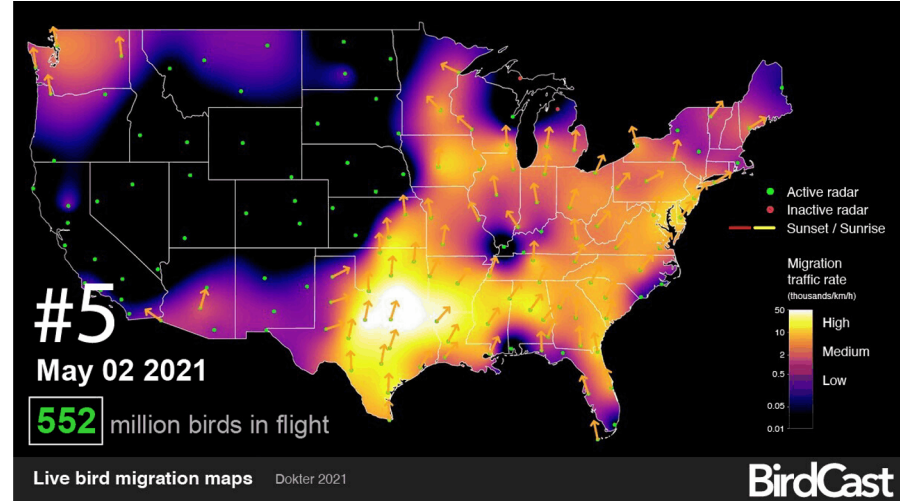
Guidelines for EVERYONE:

- Turn off all non-essential lights from 11:00 p.m. to 6:00 a.m. each night during migration season.
- Do not use landscape lighting to light up trees or gardens where birds may be resting.
- For essential lights (like security lighting) use the following dark skies friendly lighting practices:
 - Aim lights down
 - Use lighting shields to direct light downwards and to avoid light shining into the sky or trees
 - Use motion detectors and sensors so lights are only on when you need them
 - Close blinds at night to reduce the amount of light being emitted from windows
- Share your success on social media and with the press, your commitment to go lights out to save birds is newsworthy.

BirdCast & Migration Alerts

BirdCast develops and maintains tools that predict and monitor bird migration. These include:

1. forecast bird migration maps that predict where and when bird migration will occur across the continental US;
2. live bird migration maps that show where migration is occurring in real-time;
3. and migration alerts to which one can subscribe to learn when high bird migration will occur in your area.



Above is an animation of the top 5 migration nights, a by-the-numbers ranking of the biggest flight nights for nocturnally migrating birds over the contiguous US during peak of spring movements in 2021.

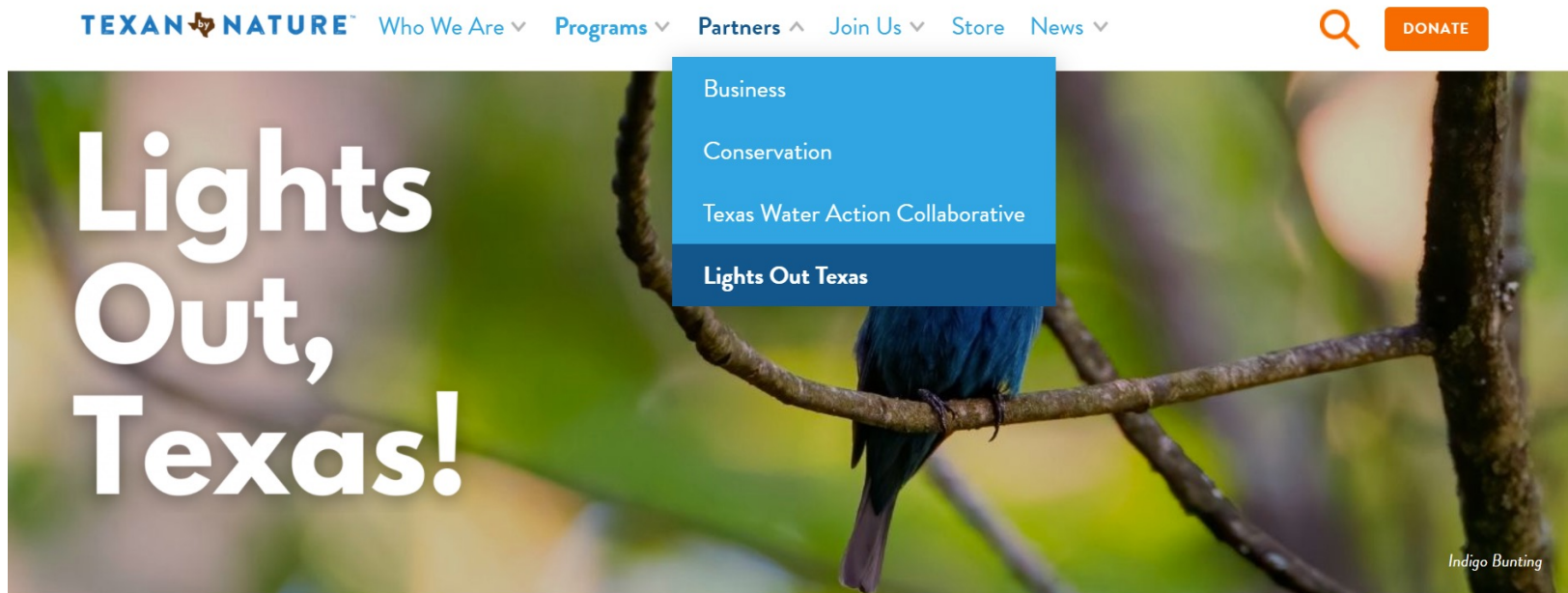
Get Recognition for Your Efforts

Take [Texas Conservation Alliance's Light Out for Wildlife Certification](#) pledge to show your commitment to go Lights Out!

Share your success and influence others to make a positive change for wildlife and energy efficiency on your social media channels and website.

If a company or community is seeking a deeper level of recognition, Texan by Nature (TxN) can recognize companies through their [Texan by Nature Certification program](#). Certified projects are highlighted on the TxN website through a story-telling write-up and on TxN social media channels, newsletter, et

Learn More About Lights Out Texas



<https://texanbynature.org/projects/lights-out-texas/>

Contact Information

Please email info@texanbynature.org if you are interested in setting up a meeting/presentation to learn more about Lights Out Texas.

REMEMBER to turn your Lights Out at night for birds in flights from 11 pm - 6 am during migration season:

- Spring Migration: ~ March 1 - June 15
- Fall Migration: ~ August 15 - November 30