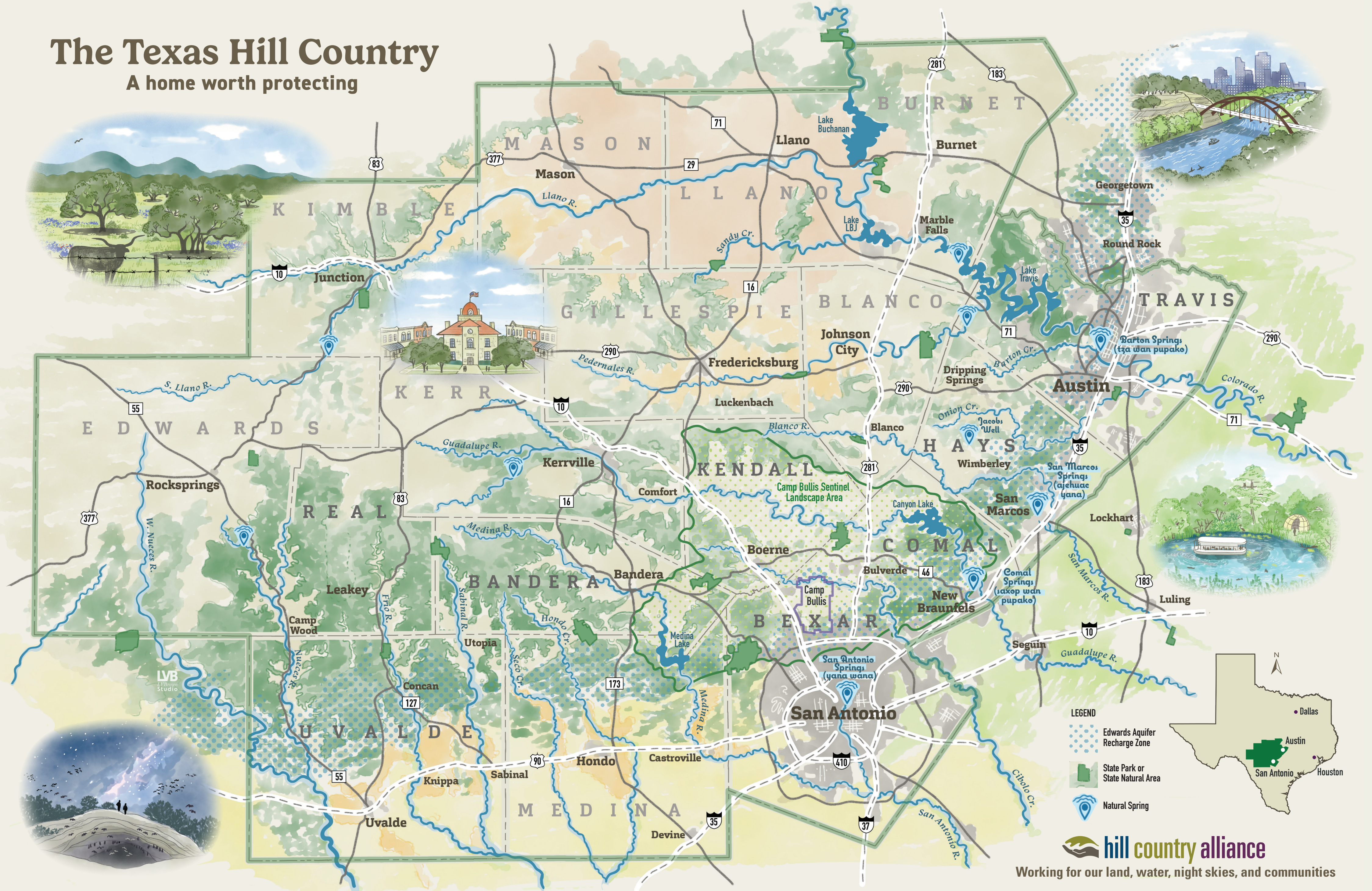


The Texas Hill Country

A home worth protecting



An Alliance for the Hill Country

The Texas Hill Country is a unique geographic region that people have called home for more than 14,000 years. At the **Hill Country Alliance**, we are dedicated to ensuring current and future generations have the opportunity to experience, enjoy, and benefit from the remarkable beauty of the Hill Country we know and love. **Our mission is to bring together a diverse coalition of partners to preserve the open spaces, starry night skies, clean and abundant waters, and the unique character of the Texas Hill Country.**



Our work is divided into four program areas:

Land: Advancing local land stewardship and conservation

Water: Preserving clear and flowing waters

Night Skies: Protecting our view of the starry night sky

Communities: Supporting thriving rural and urban communities

In addition to our work as a standalone organization, the Hill Country Alliance serves as the convener and fiscal sponsor of the Texas Hill Country Conservation Network, a broad coalition of organizations and agencies who have come together to advance shared goals for conservation of the region.

Learn more about the Network at www.OurTXHillCountry.org

Maps as Storytellers

Storytelling is central to the work of the Hill Country Alliance, and maps are a powerful tool in depicting all that we are working to protect in this region. While care has been taken to show geographic features as accurately as possible, this map is first and foremost a work of art. To preserve the beauty of its design, some towns, notable landmarks, and beloved natural features may not be shown. There are a few features depicted on this map that warrant additional explanation:



Land of 1,100 Springs

The Hill Country is the beating heart of water for the state of Texas—however, only a small selection of the region's many springs are shown. The named spring sites highlighted along the eastern edge of the Hill Country have both tremendous historical importance and present-day significance to indigenous communities who have called this region home since time immemorial. These springs are listed in both English and a Coahuiltecan dialect. Learn more about the original peoples of this region by visiting Indigenous Cultures Institute (IndigenousCultures.org) or attending their annual fall powwow at the springs in San Marcos.

Camp Bullis Sentinel Landscape

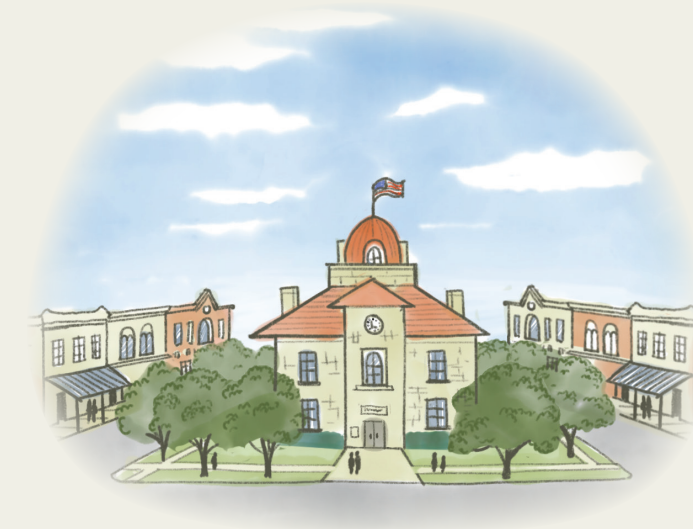
Started in 2022, the Camp Bullis Sentinel Landscape Partnership is a locally led, collaborative group focused on conserving natural resources, strengthening military readiness, and bolstering agricultural productivity around Joint Base San Antonio-Camp Bullis. To learn more about this collaborative effort coordinated by the Hill Country Alliance, see CBSLTexas.org.

Texas State Parks and Natural Areas

The Hill Country has some of the most highly visited parks in the entire state parks system, managed by Texas Parks and Wildlife Department. As our state becomes increasingly urban (more than 80% of Texans live in urban areas), it is critical that we invest in public places where anyone can connect to the incredible beauty and importance of our natural resources. Trails, parks, camps and open spaces are part of what makes the Hill Country such a special part of Texas.

Groundwater

Invisible from a bird's-eye view, the entire Hill Country is situated above and dependent upon vast karst aquifer systems. Four of Texas' nine major aquifers—the Edwards-Trinity, Edwards, Trinity, and Carrizo-Wilcox—underlay the region, providing water to millions of residents and sustaining our iconic springs. The Edwards Aquifer Recharge Zone, shown with blue hashing on the map, is an especially critical area for water quantity and quality protection because of the high-degree of connectivity between surface and groundwater.



Starry Night Skies

The stars really are big and bright across much of the Hill Country, as shown in this bat cave and starry night scene. What's not shown on this map are the public observatories, International Dark Sky Association-recognized parks, communities, and places, or the many Friends of the Night Sky Groups working tirelessly to keep our view of the stars clear.



Learn more about the Hill Country and our work:

Land

The Texas Hill Country region covers over 11 million acres of mostly privately held land. Texas is losing private ranch lands to fragmentation and development faster than any other state. The Land Program addresses these threats by promoting both land conservation and good land stewardship, hosting educational events, raising funds for land stewardship and conservation, sharing informational resources, and collaborating with landowners, neighbors, elected officials, and partners dedicated to conservation across the region.

Water

Historically known as the land of 1,100 springs, the Hill Country is the beating heart of water for the state of Texas. Our region generates the headwaters of twelve Texas rivers, and provides water for millions of downstream neighbors. As the Hill Country grows, increasing demands on limited groundwater resources threaten to dry up wells and springs that sustain our most iconic creeks and rivers. HCA works to address these water challenges by convening grassroots partners, promoting conservation practices and new models of water efficiency, helping rural communities improve failing water infrastructure, and raising community voices in local, regional, and statewide water management conversations.

Night Skies

80% of children in North America grow up without a view of the Milky Way due to light pollution - outdoor lighting that floods upward and clouds our view of the stars. The Hill Country sits on the edge of the night and as development and light pollution push westward from the urban corridor, we risk losing our unimpeded view of the night sky. Thanks to countless volunteers, the Hill Country is home to more night sky preservation activity than any other similarly-sized region in the world. HCA works to reduce light pollution and its impacts through community partnerships, public outreach, local and regional initiatives, lighting best practices, and celebration of our star-filled night sky.

Communities

90% of the Hill Country falls outside of incorporated cities and towns, where we have far fewer tools to plan for growth. As our population booms and development pressures extend into previously undeveloped lands, the cultural centers of our communities are being lost to new outward-spreading growth. HCA promotes new and better ways to support healthy, vibrant communities both in the urban corridor and in rural areas throughout the region. We partner with cities, counties, and local groups to build community leaders, support locally-based advocacy, and address challenges ranging from land loss to the expansion of the sand and gravel mining industry.

Join the Conversation!

The best way to stay in touch with the Hill Country Alliance and our work is to visit our website. There you can find informational resources, learn more about our programs, events and partnerships, and sign up for our monthly newsletter.

The Hill Country Alliance depends on the contributions of private individuals, family foundations, and businesses from across the region. Your support allows us to be a valuable resource for regional leaders, volunteers, land stewards, and local communities as we work toward a sustainable Hill Country. If you would like to support this important work, make a tax-deductible donation at www.hillcountryalliance.org/donate or mail your contribution to the mailing address below. Email info@hillcountryalliance.org to join our monthly Sustaining Neighbor program or to explore other ways to give including legacy giving or donor advised funds.

 **hill country alliance**
PO Box 151675, Austin, TX 78715

   
HillCountryAlliance.org