



Junction, Texas May 5, 2011

*...helping people restore the earth*

[www.seedsource.com](http://www.seedsource.com)

**all is well here on the farm!**

thank you to all those who checked in on  
us during last week's wildfires



# THE JUNCTION EAGLE

The Land of Living Water

Volume 130

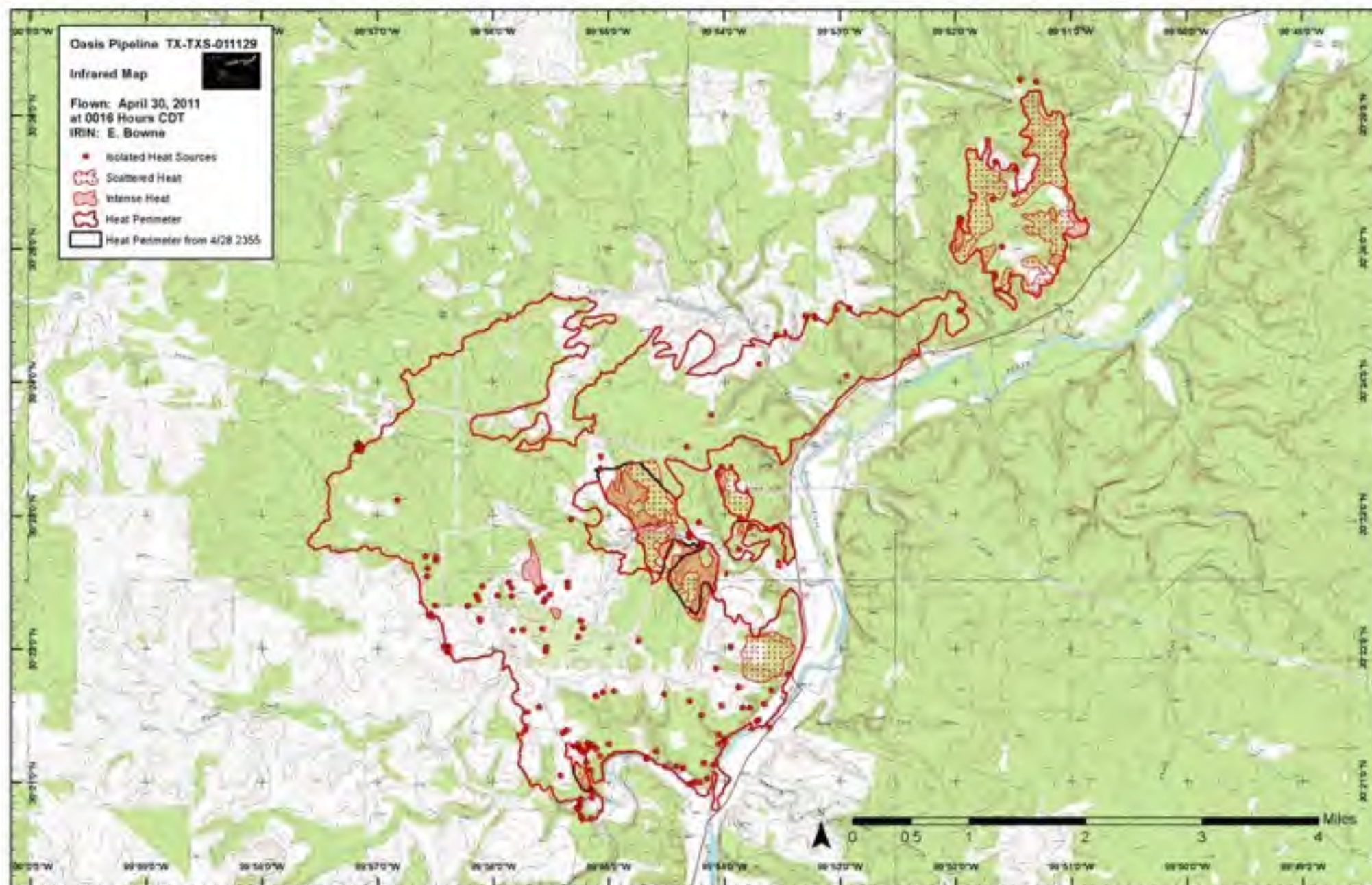
USPS 286-540

©The Junction Eagle, Wednesday, May 4, 2011

50¢ per copy

Number 17

## Fire consumes over 10,000 acres



Firefighters are making headway in containing the Oasis Fire located approximately 4 miles south/southwest of the City of Junction and 4.5 miles south of Interstate 10 west of Junction. Favorable weather conditions on Monday, May 2, greatly assisted efforts by approximately 100+ firefighters and other personnel as they continue with suppression efforts. The wildfire, which has consumed over 10,000 acres and destroyed ten structures, is now estimated to be 75% contained with operations personnel optimistic that con-

See Fire on Page 7





view of smoke  
from farm fields

ashes fell on us  
but no direct  
danger



several of our staff were out of town  
during first few days of fire  
at landscape architect conference  
galveston, tx



a fire in a  
neighborhood  
4-mi up river  
burned  
2 houses





undetermined  
how this fire started






the 10,000 acres that burned  
was in extremely rugged, cedar  
hill country - believed started by lightning





A landscape photograph taken from a dirt road. The foreground is a light-colored, sandy dirt road. To the left, there is a dense cluster of dark green trees. The middle ground shows a field with sparse, low-lying green vegetation and some small trees. In the background, there are rolling hills under a clear, light blue sky. The text "access only to small portions of burn area by a county road" is overlaid in white on the lower part of the image.

access only to small  
portions of burn area  
by a county road





it was named

## Oasis Pipeline Fire

the line did not  
catch fire



A black and white photograph of a forest. In the foreground, there are several bare, thin tree branches. A large, thick, gnarled tree trunk is prominent in the center-left. The background shows a dense forest of bare trees under a light sky. The ground is covered with dry leaves and twigs.

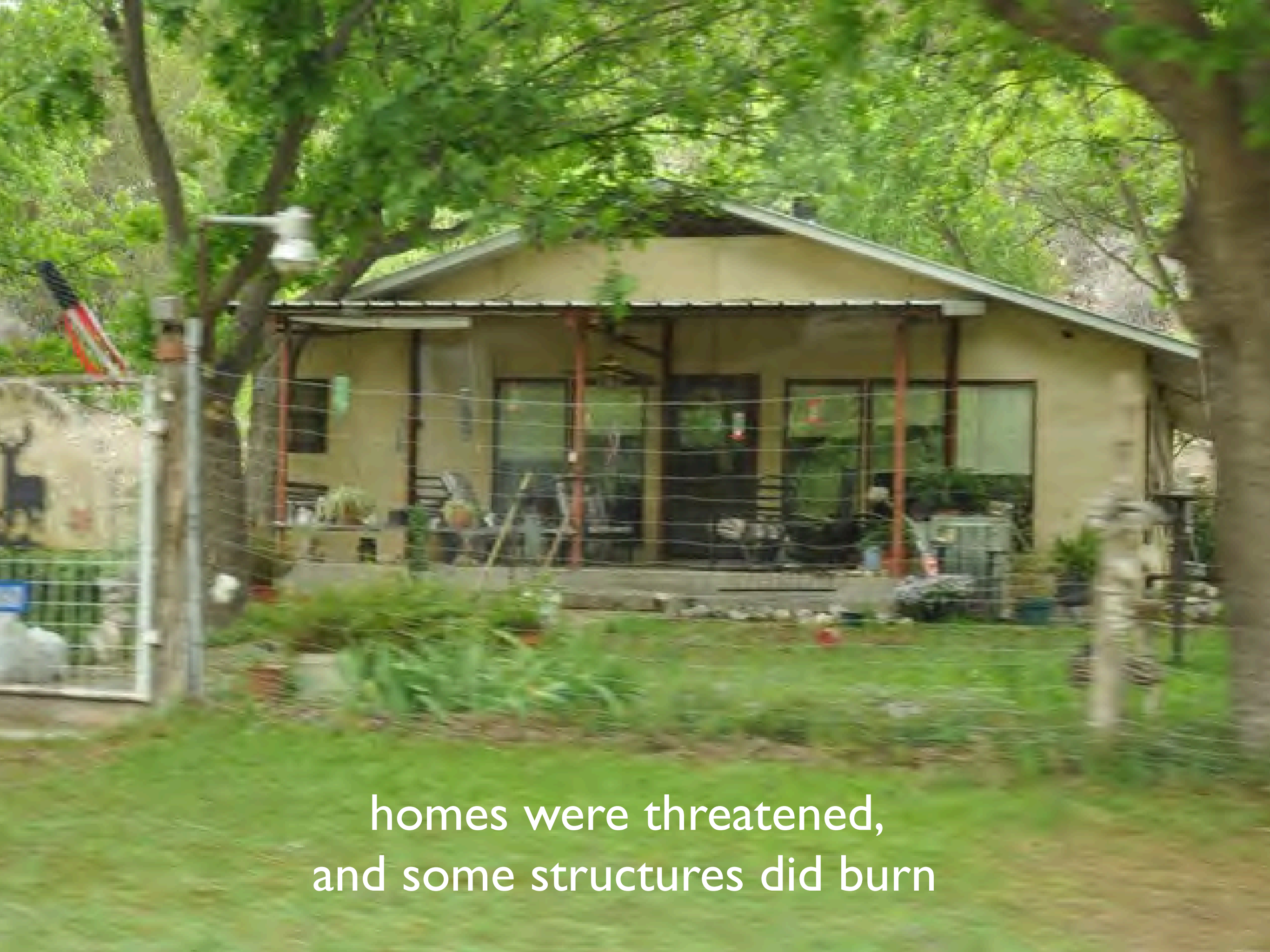
cedar fires are extremely hot  
and are nearly impossible to put out





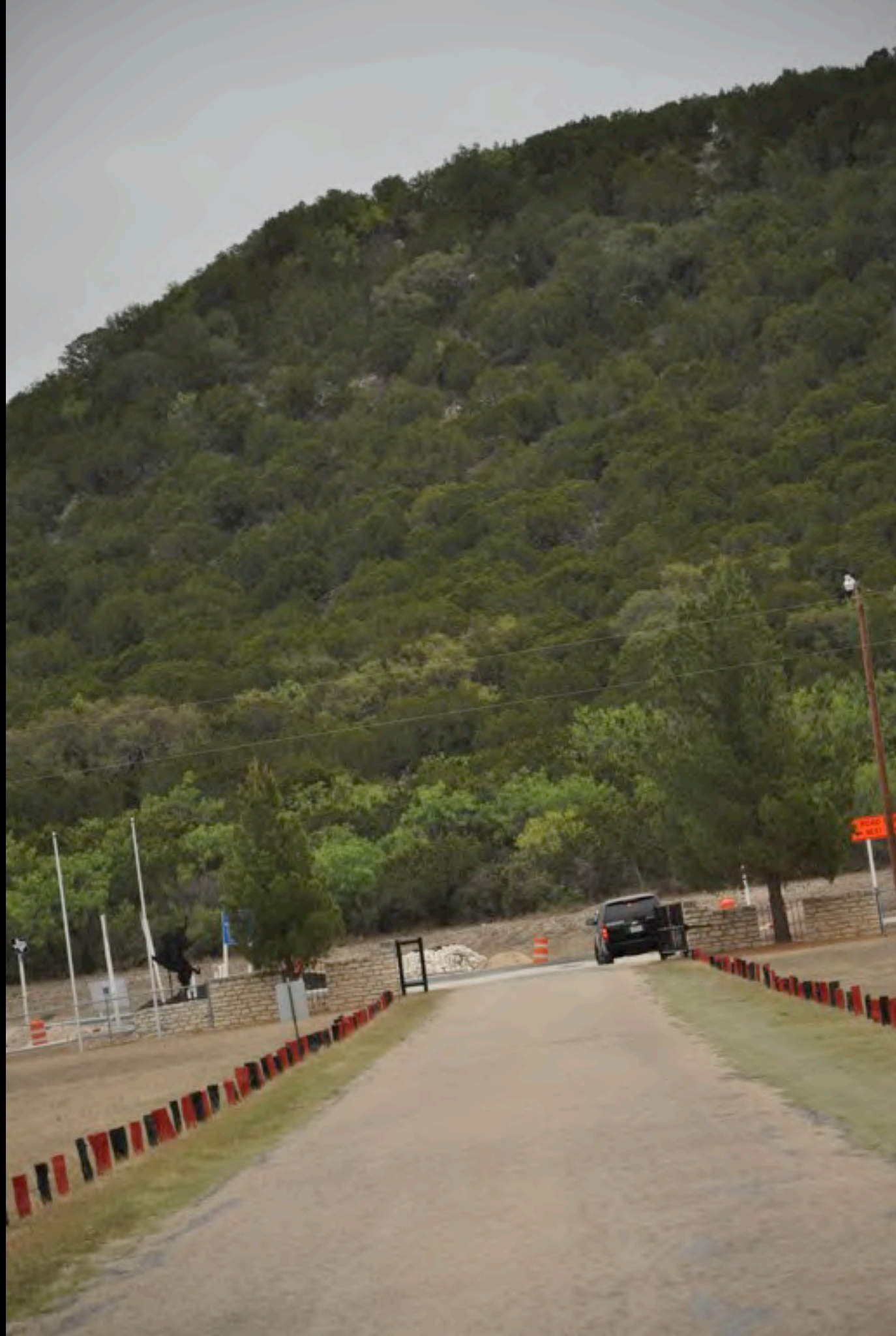
the fire jumped  
one county road  
and kept burning





homes were threatened,  
and some structures did burn






TTU campus  
in Junction  
offered their space  
to out of town  
firefighters

for sleeping  
& meals









the fire  
forced  
many ranchers  
to evacuate  
their livestock

some of our staff  
helped friends  
move animals



An aerial photograph showing a large, irregularly shaped area of land that has been burned. The burned area is a mix of dark brown and grey, with some lighter patches, indicating different stages of fire or soil composition. It is surrounded by dense green forest. The terrain appears rugged with some ridges and valleys. In the upper left, there are some lighter, more uniform patches of land, possibly agricultural fields or cleared areas. The overall perspective is from a high altitude, looking down on the landscape.

a few thousand acre finger of the fire  
taken from 5500 ft above sea level





the land  
needs time

and

careful management  
to recover





...and rain









other farm news





westy  
implemented...

a vision for sustainable  
rainwater harvesting  
on our farm





3 new tanks  
+ 1 old tank

total capacity  
18,500 gal





1000 gallons already captured from  
1" rain 2-days after finished

handmade artful  
gutter design  
to catch water  
from roof





our old farm dog got  
her first ever  
professional spring  
haircut & loves it!





bruno hasn't chased  
the chickens  
anymore





emily still gets  
3 fresh eggs / day





friends visiting from Holland  
got thrown into the fray





the huisache daisies  
smell amazing!



















we have literally  
hundreds  
of painted buntings  
signaling the texas cupgrass  
is ready for harvesting















the farm  
continues to  
attract  
life



Cool River Cabin located  
between our farm fields & the Llano River

has availability  
check our website

[www.seedsource.com](http://www.seedsource.com)



NATIVE AMERICAN



SEED

'the grass issue'

...helping people  
a practical guide  
for eco-logical

