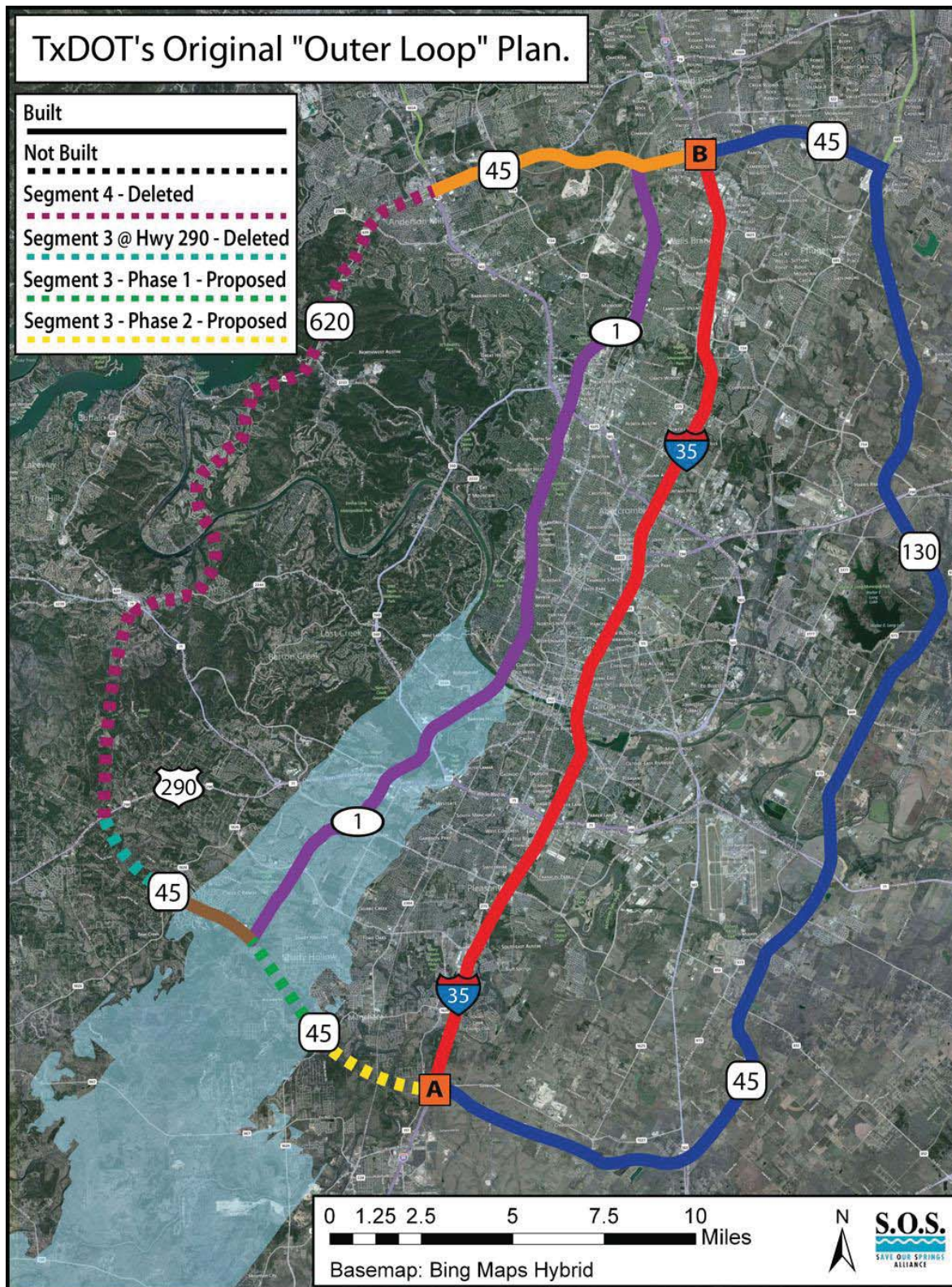


TxDOT's Original "Outer Loop" Plan.

- Built
- Not Built
- Segment 4 - Deleted
- Segment 3 @ Hwy 290 - Deleted
- Segment 3 - Phase 1 - Proposed
- Segment 3 - Phase 2 - Proposed



Current Proposal:
Mopac as the Outer Loop &
Western Bypass for I-35 Traffic.

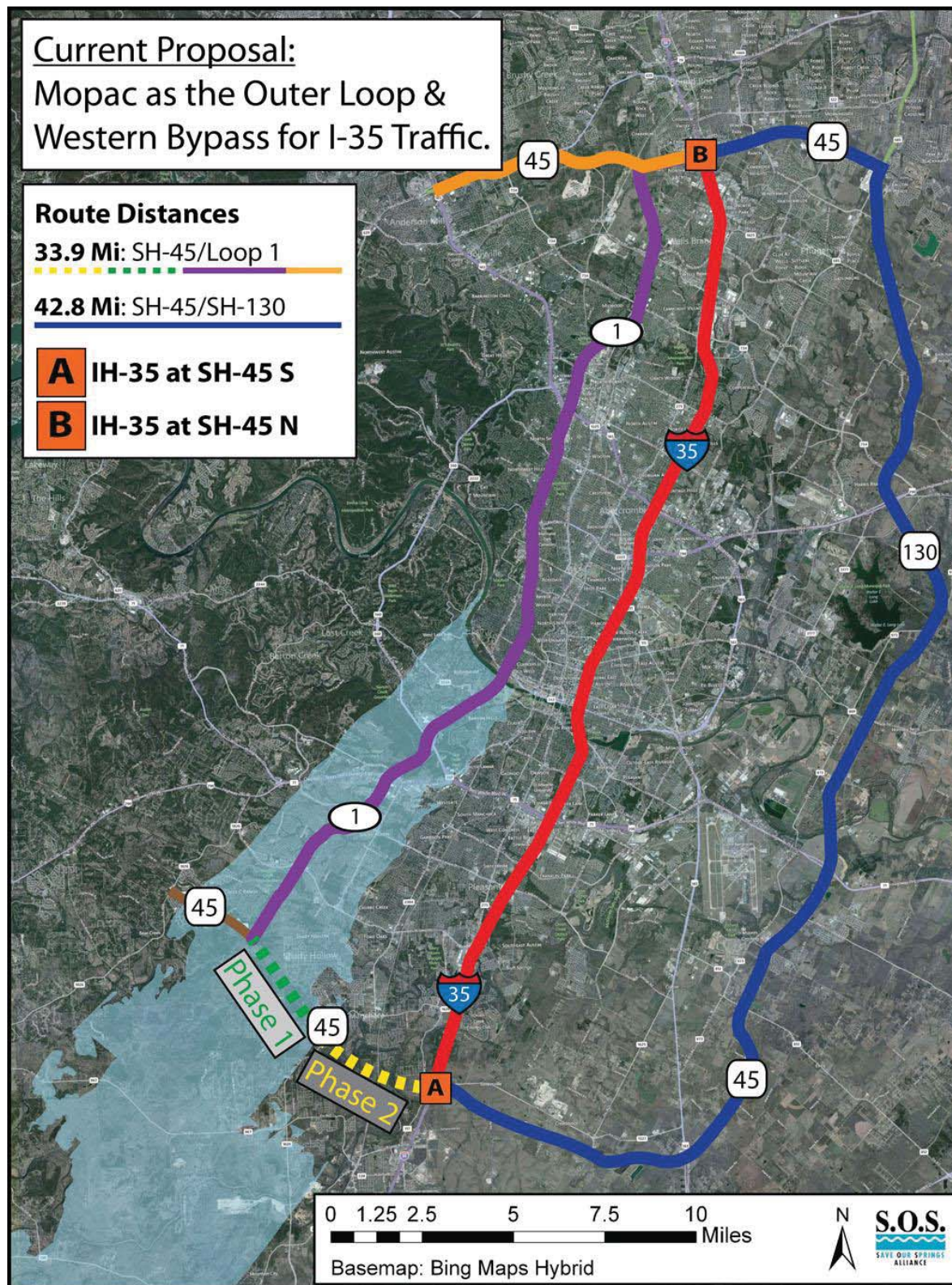
Route Distances

33.9 Mi: SH-45/Loop 1

42.8 Mi: SH-45/SH-130

A IH-35 at SH-45 S

B IH-35 at SH-45 N

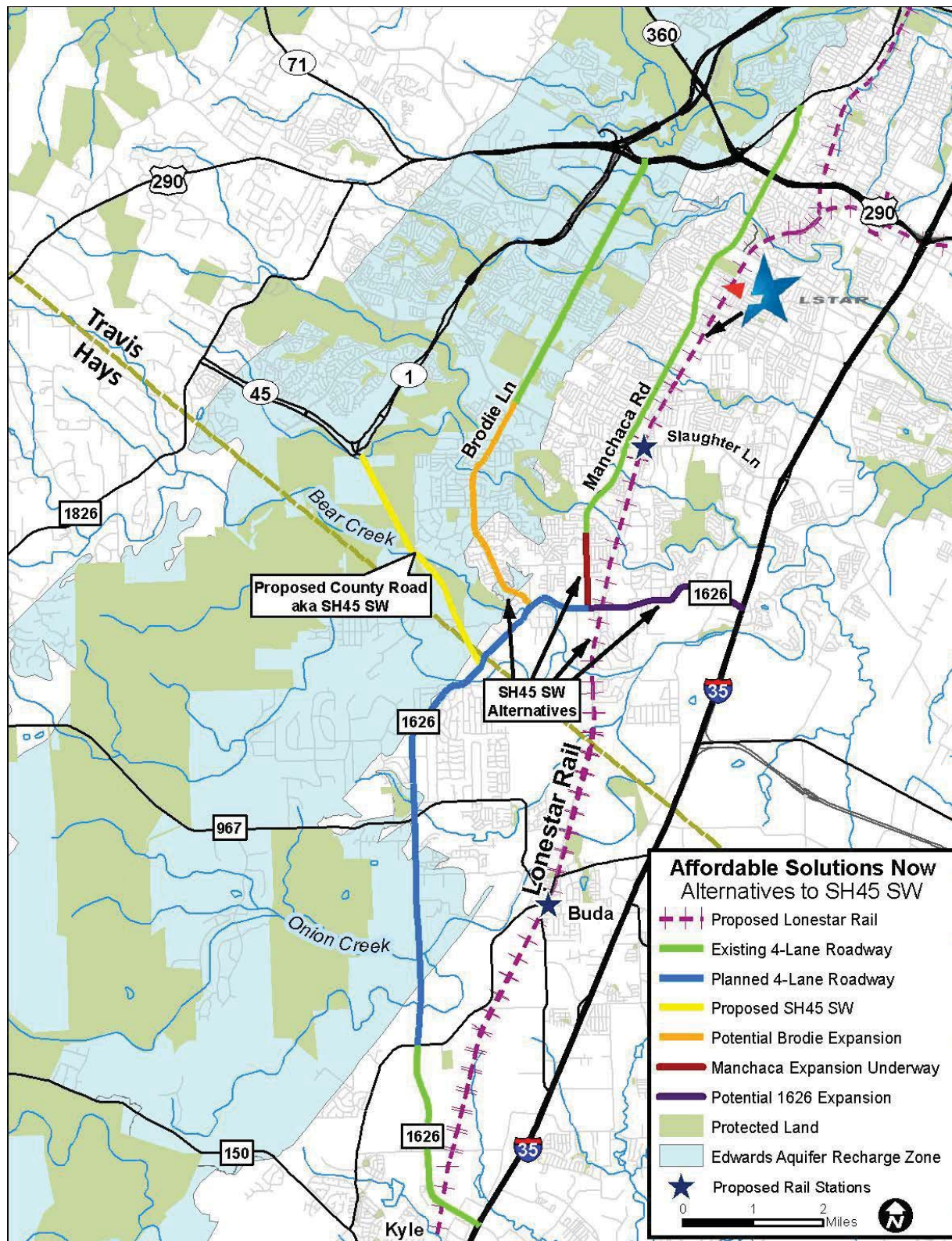


0 1.25 2.5 5 7.5 10 Miles

Basemap: Bing Maps Hybrid



S.O.S.
SAVE OUR SPRINGS
ALLIANCE



SH45SW Transportation Alternatives

**CFI
Intersection,
increase left
turn bays**

**Add left turn
lane**

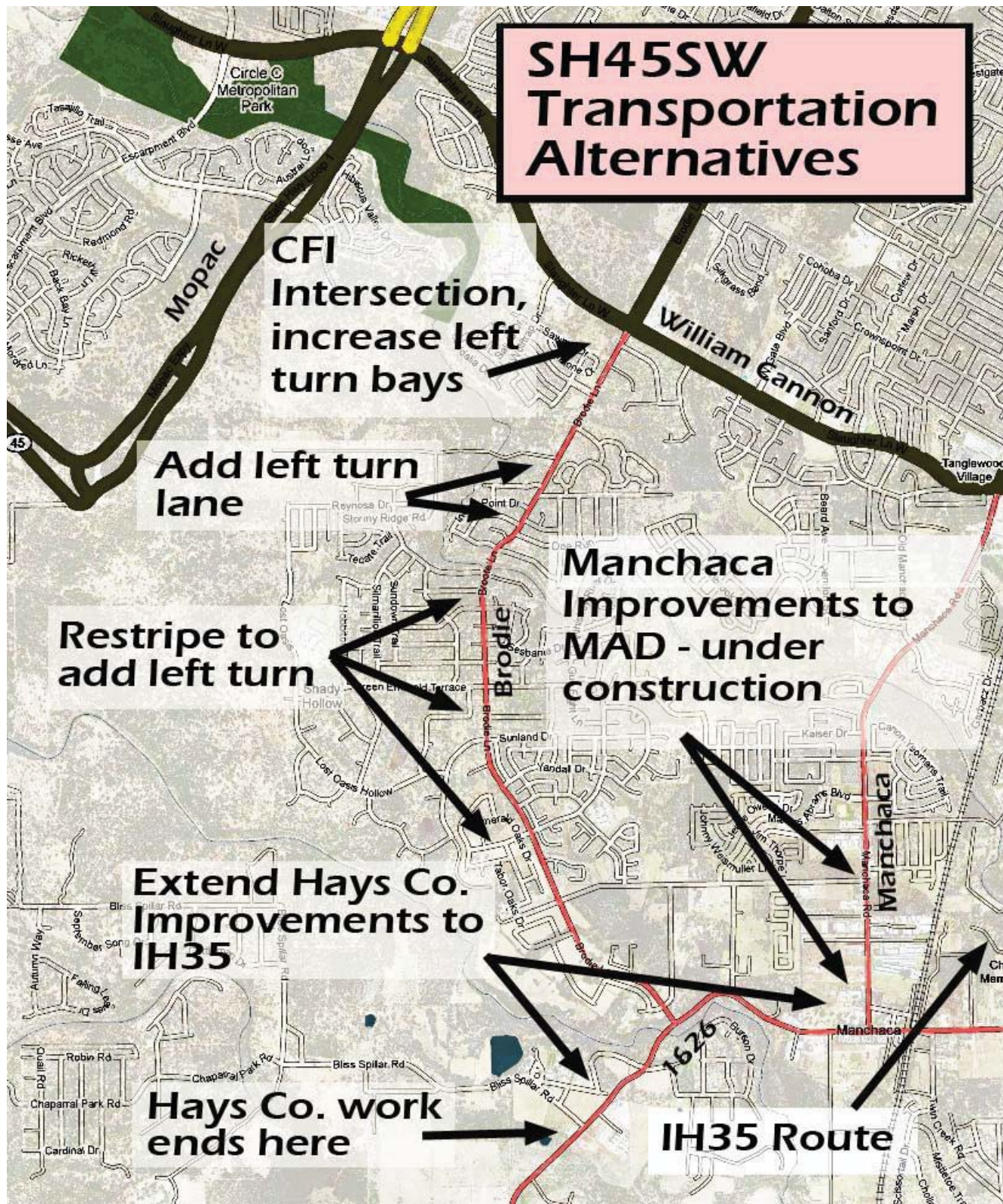
**Restripe to
add left turn**

**Extend Hays Co.
Improvements to
IH35**

**Hays Co. work
ends here**

**Manchaca
Improvements to
MAD - under
construction**

**1626
IH35 Route**



Projected 2015 Traffic Volumes in the Vicinity of SH 45 SW (SH 45 SW Built and Not-Built)

	Roadway	2005 ⁽¹⁾ Counts	2015 Volumes		
			SH 45 SW Built ⁽²⁾		SH 45 Not-Built ⁽³⁾
			Toll	Toll free	
1	SH 45 SW	N/A	20,800	29,500	N/A
2	Brodie	9,550	10,500	10,100	13,500
3	FM 1626 N of 45	13,100	28,000	28,000	35,500
4	FM 1626 S of 45	7,600	42,500	45,000	35,500
5	FM 1626 E of FM 2304	12,200	26,000	26,000	26,500
6	FM 2304 N of FM 1626	13,000	14,500	13,000	23,000
7	Loop 1 S N of SH 45 SW	20,300	31,000	37,500	19,000

⁽¹⁾ 2005 Counts are from TxDOT annual counts for FM 1626 and saturation counts for Brodie Ln.

⁽²⁾ The volumes are from the CAMPO Model assuming SH 45 SW built between Loop1 and RM 1626 in 2015.

⁽³⁾ The volumes are from the CAMPO Model assuming SH 45 SW not built between Loop1 and RM 1626 in 2015.

Projected 2030 Traffic Volumes in the Vicinity of SH 45 SW (SH 45 SW Built and Not-Built)

	Roadway	2005 ⁽¹⁾ Counts	2030 Volumes		
			SH 45 SW Built ⁽⁴⁾		SH 45 Not-Built ⁽⁵⁾
			Toll	Toll free	
1	SH 45 SW	N/A	41,200	54,500	N/A
2	Brodie	9,550	20,000	17,000	22,500
3	FM 1626 N of 45	13,100	38,000	32,000	49,500
4	FM 1626 S of 45	7,600	50,500	54,000	49,500
5	FM 1626 E of FM 2304	12,200	34,500	33,500	40,500
6	FM 2304 N of FM 1626	13,000	21,500	17,500	32,000
7	Loop 1 S N of SH 45 SW	20,300	59,000	79,500	49,000

⁽¹⁾ 2005 Counts are from TxDOT annual counts for FM 1626 and saturation counts for Brodie Ln.

⁽⁴⁾ The volumes are from the CAMPO Model assuming SH 45 SW built between Loop1 and I-35 in 2030.

⁽⁵⁾ The volumes are from the CAMPO Model assuming SH 45 SW not built between Loop1 and I-35 in 2030.

Campo DTA Results Memo, September 5th 2012

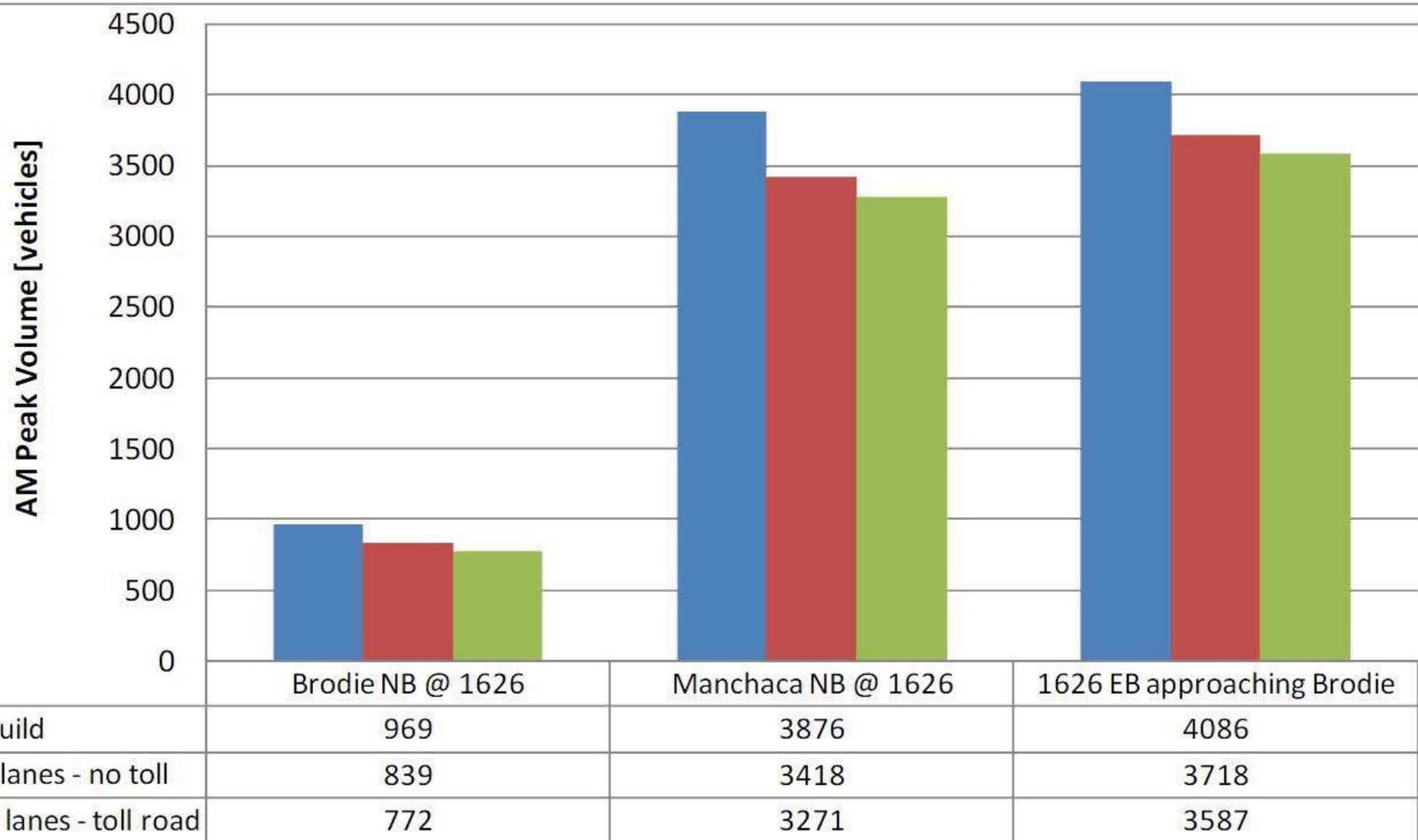


Figure 1. Volumes in the vicinity of Brodie Lane, Manchaca Road, and FM 1626

Campo DTA Results Memo, September 5th 2012

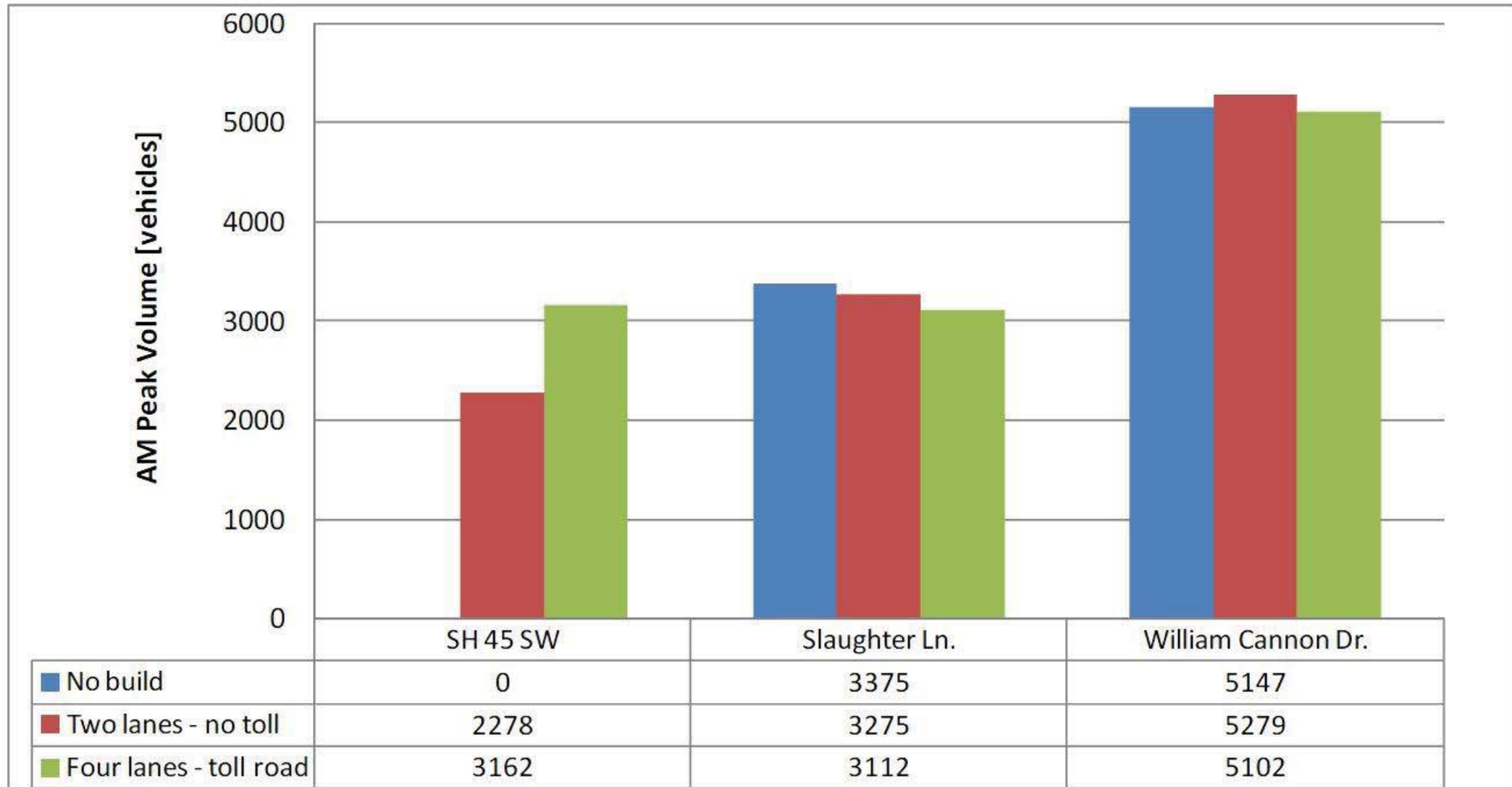
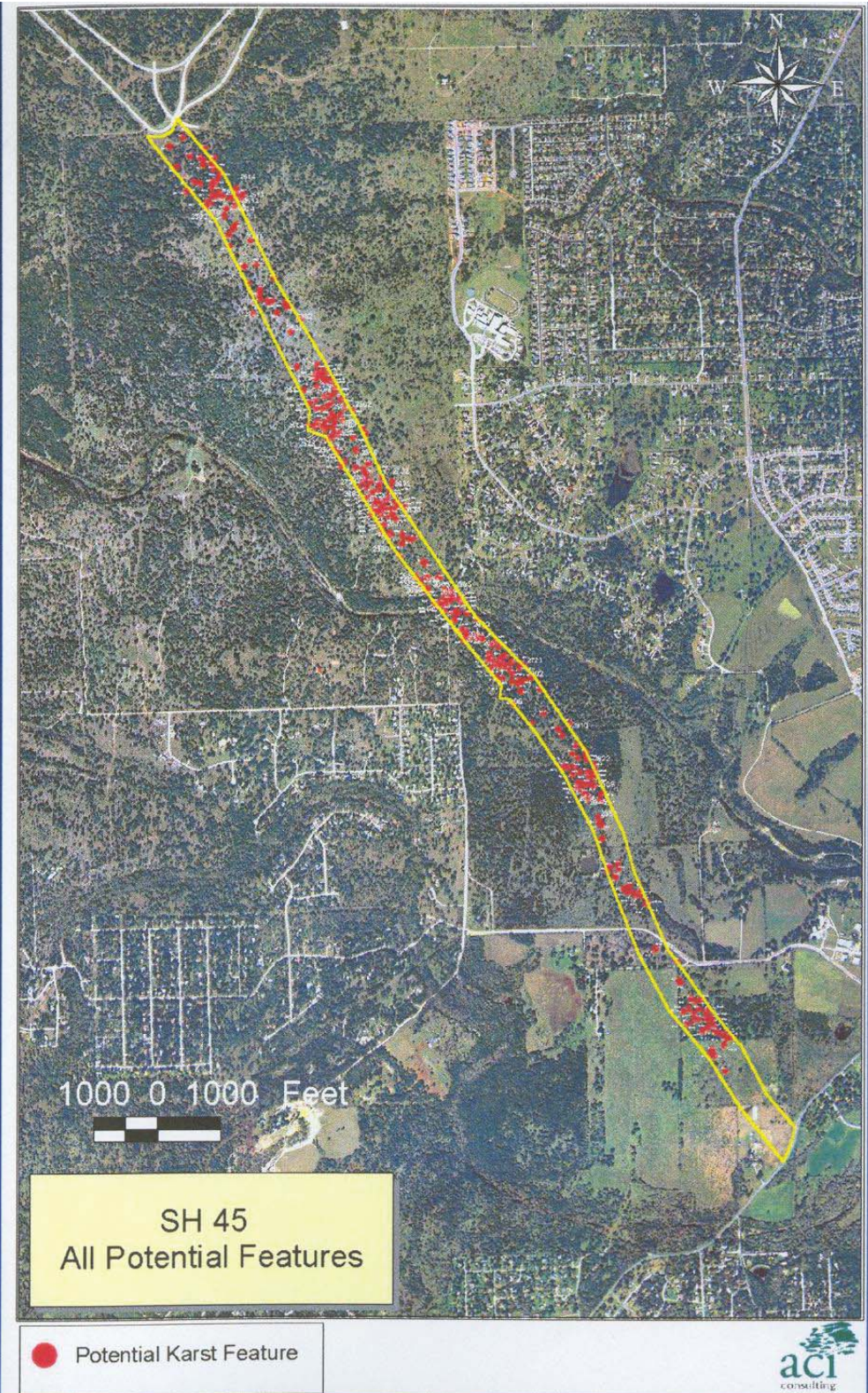


Figure 2. Volumes on westbound streets approaching MoPac Expressway

All Features

- Preliminary Karst Survey generated 381 potential features



DRAFT

Flint Ridge Cave Surface Catchment

