

# Capital Area Council of Governments

## 2008 State of the Region

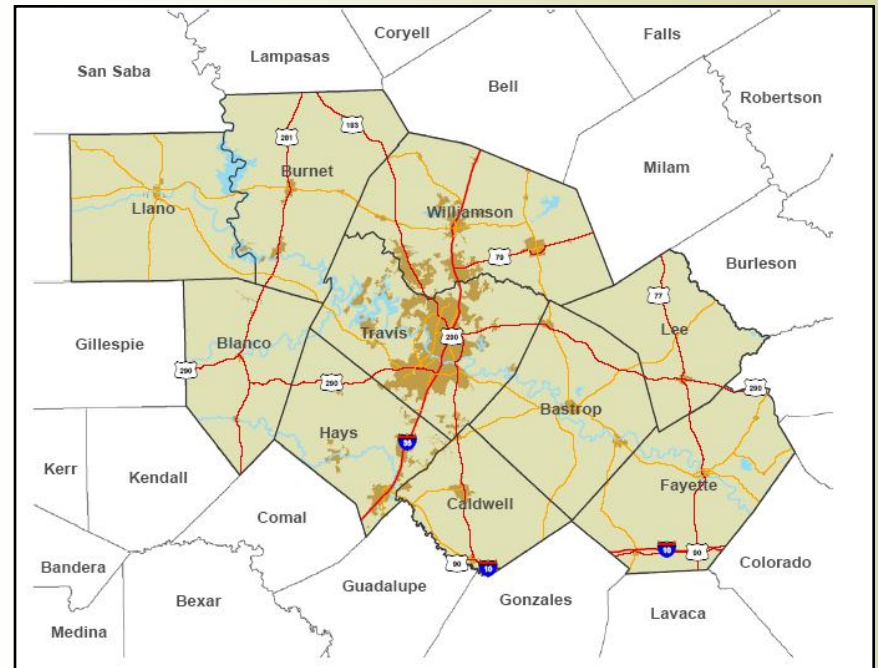
CAPCOG General Assembly

Marriot Austin Airport South

December 10, 2008

Betty Voights, Executive Director

Brian Kelsey, Director





- 2008
- 2009
- CAPCOG Strategies
- Q&A



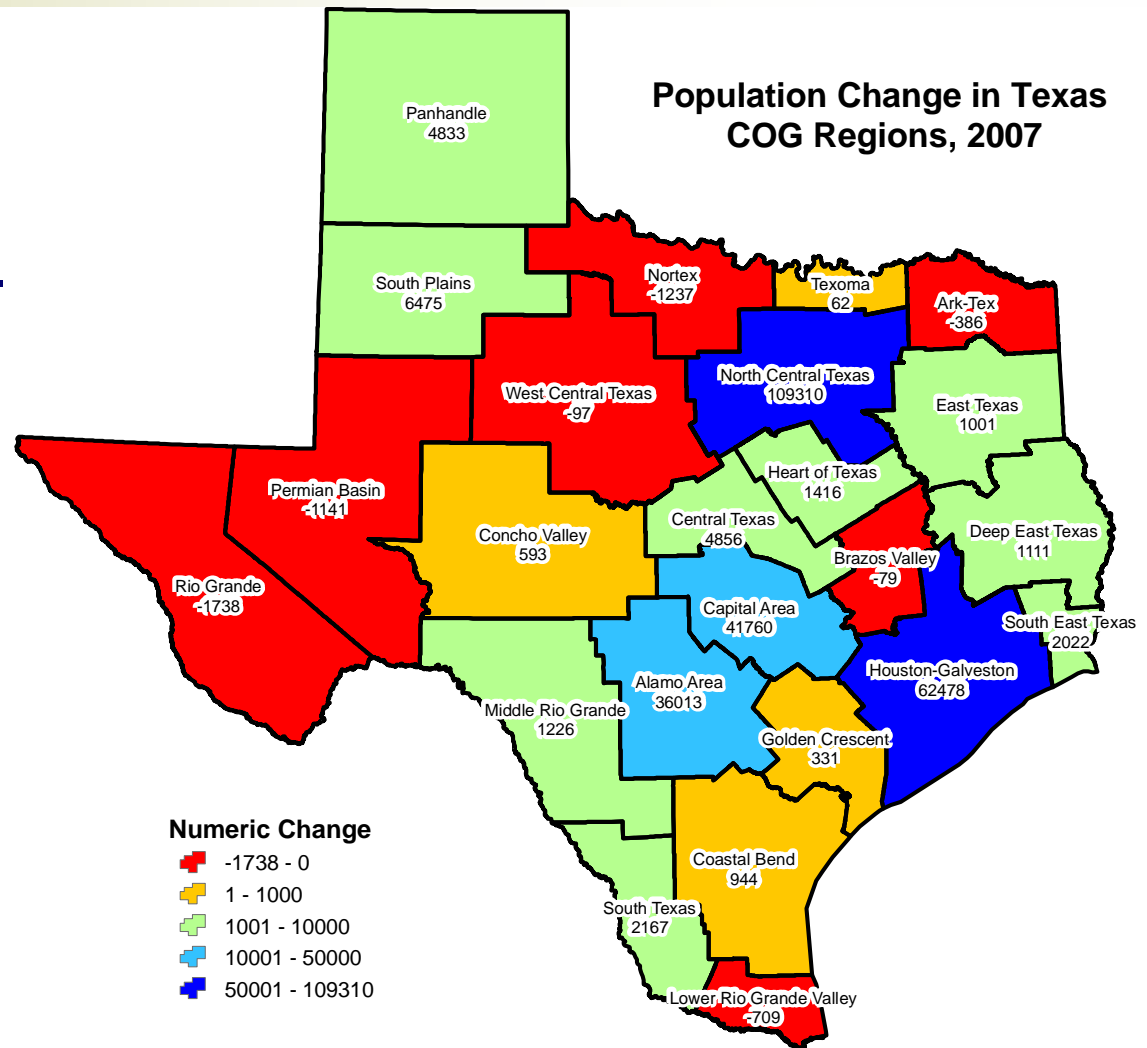
# 2008



- Strong growth, but slowing
- Home building correction
- Rising unemployment
- Still competitive

CAPCOG's population grew by an estimated 42,000 people in 2007.

CAPCOG ranked third among COGs. 92% of statewide growth was in the 4 largest COGs.



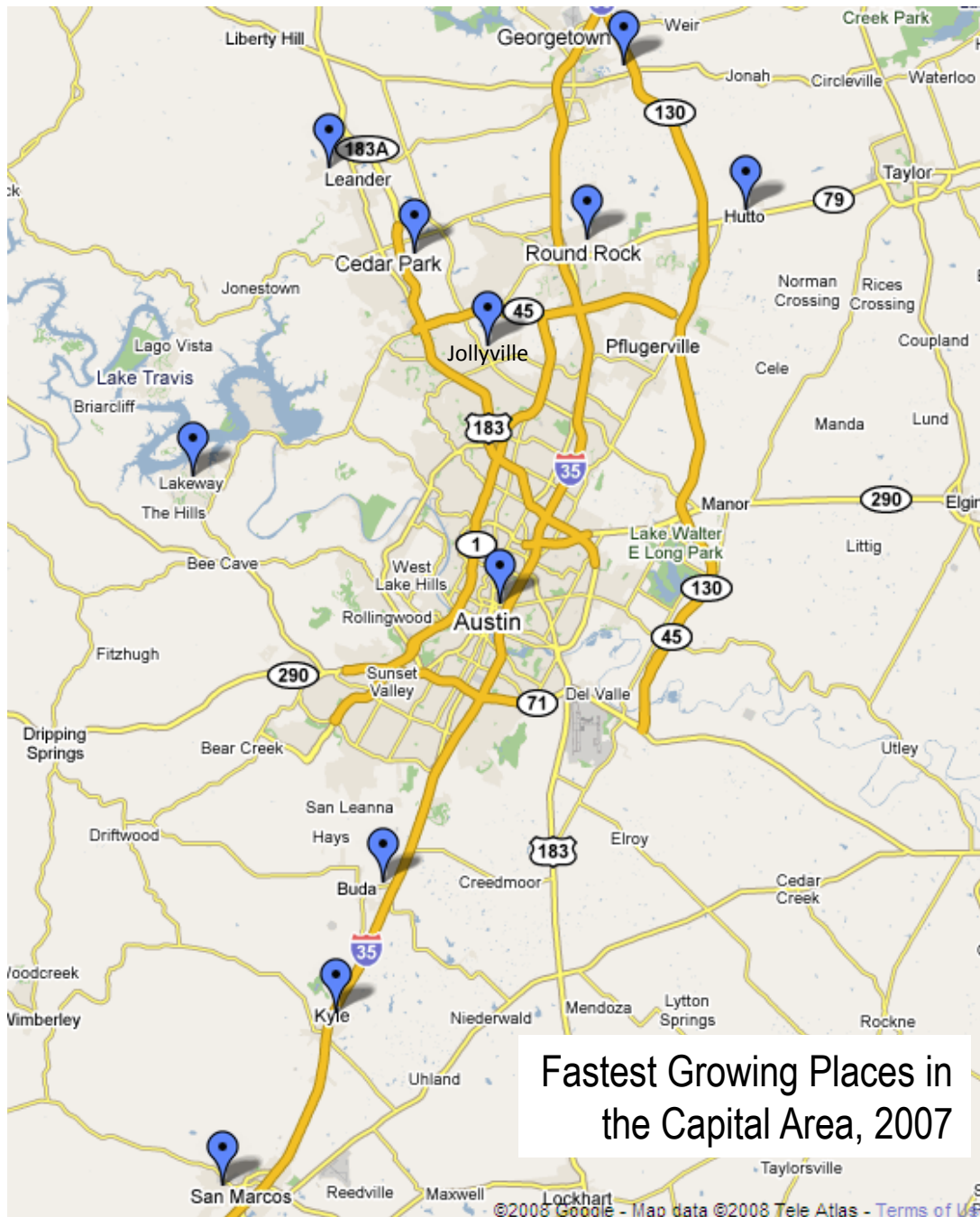
## CAPCOG 2008 State of the Region 2008



	Population	% of CAPCOG
Travis	956,901	56%
Williamson	381,461	22%
Hays	142,310	8%
Bastrop	72,620	4%
Burnet	43,433	3%
Caldwell	35,843	2%
Fayette	24,037	1%
Llano	19,220	1%
Lee	17,391	1%
Blanco	9,420	1%

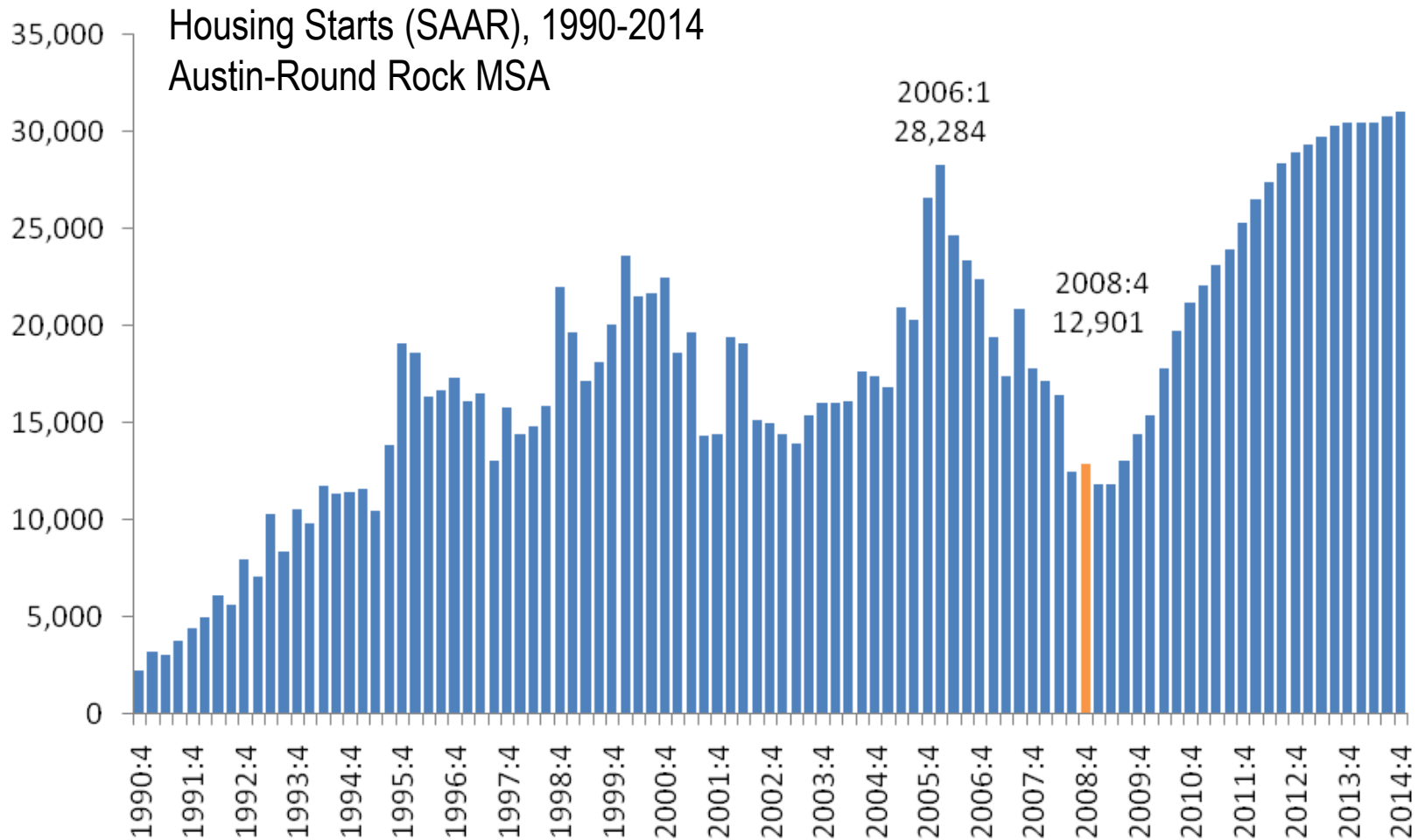
Fastest growing counties  
in Texas during 2007:

Williamson	5 <sup>th</sup>
Travis	10 <sup>th</sup>
Hays	14 <sup>th</sup>
Burnet	21 <sup>st</sup>

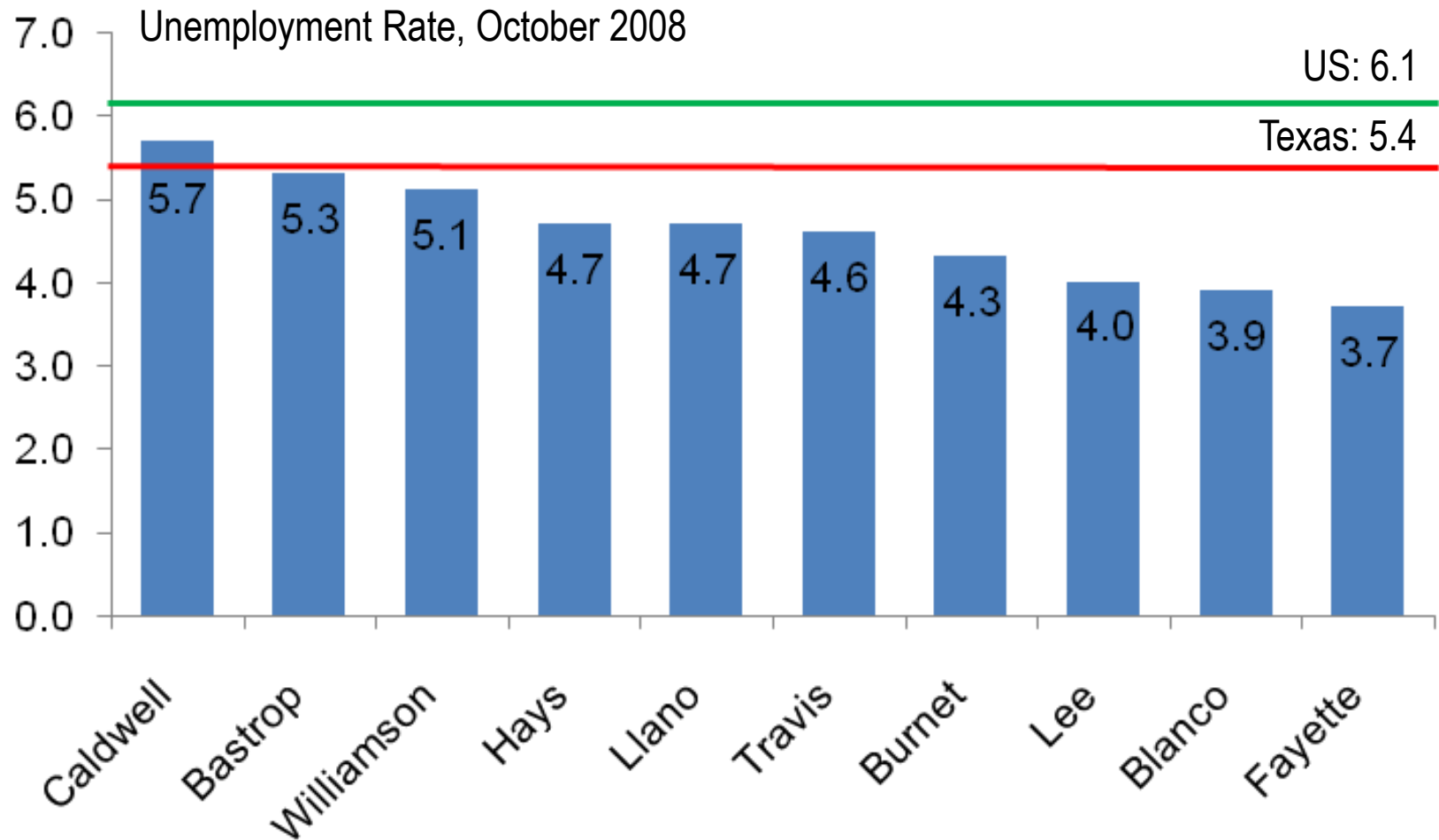


Population Growth, 2007		
1.	Austin	9,332
2.	Round Rock	4,604
3.	Leander	3,960
4.	San Marcos	3,708
5.	Cedar Park	3,093
6.	Georgetown	2,852
7.	Hutto	2,297
8.	Lakeway	1,981
9.	Kyle	1,233
10.	Jollyville	1,085
11.	Buda	1,008

# CAPCOG 2008 State of the Region 2008







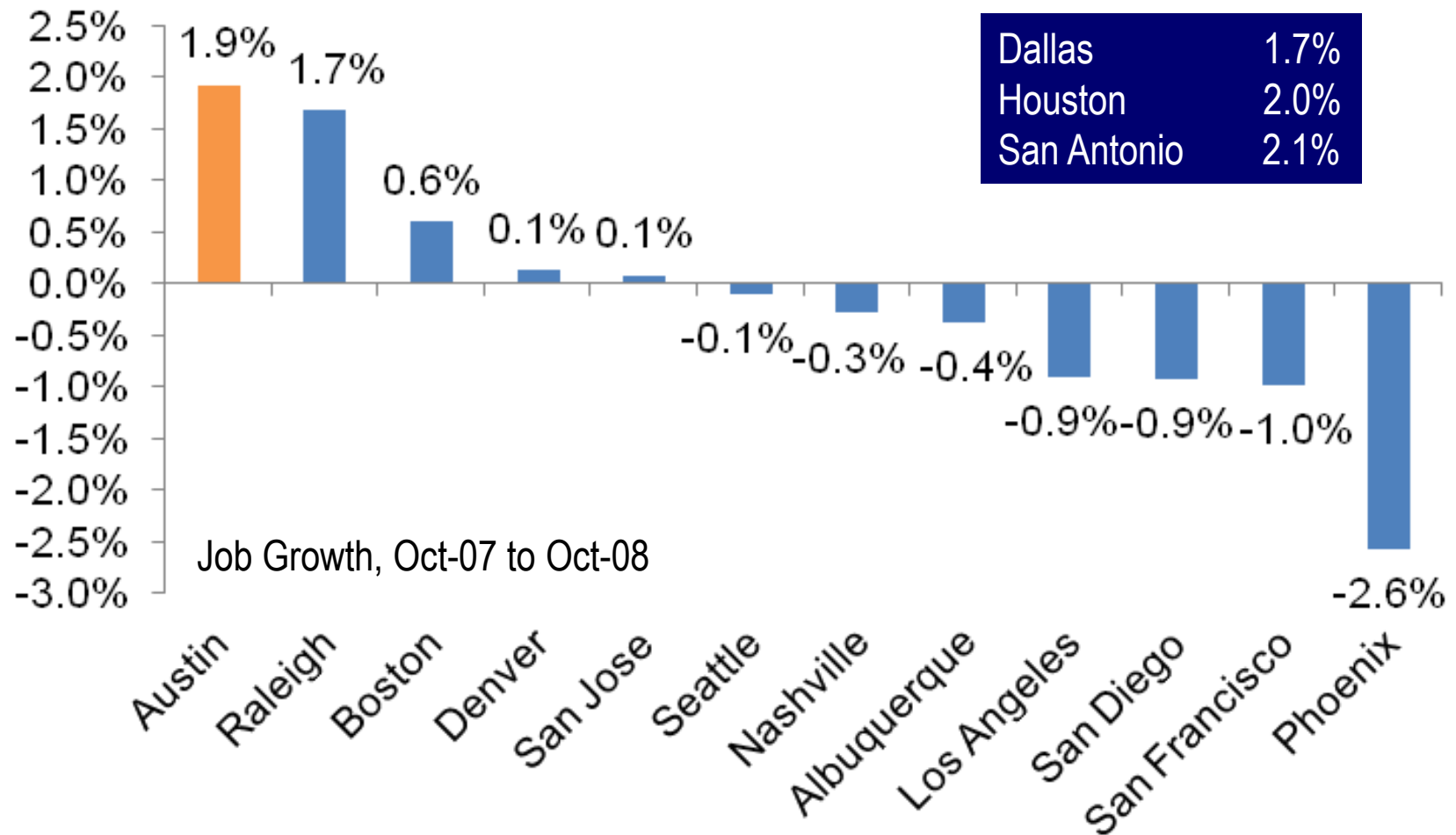
## CAPCOG 2008 State of the Region 2008



	Unemployed Oct-08	Change 2007-08	Change 2006-07
Bastrop	1,915	602	-113
Blanco	199	39	-2
Burnet	990	276	-96
Caldwell	960	317	-61
Fayette	457	87	-28
Hays	3,458	947	-148
Lee	373	72	-16
Llano	411	93	-28
Travis	25,099	6,927	-799
Williamson	10,090	3,171	-294

Unemployed people in the Capital Area reached 43,952 in October 2008, a 40% increase from one-year earlier.

# CAPCOG 2008 State of the Region 2008



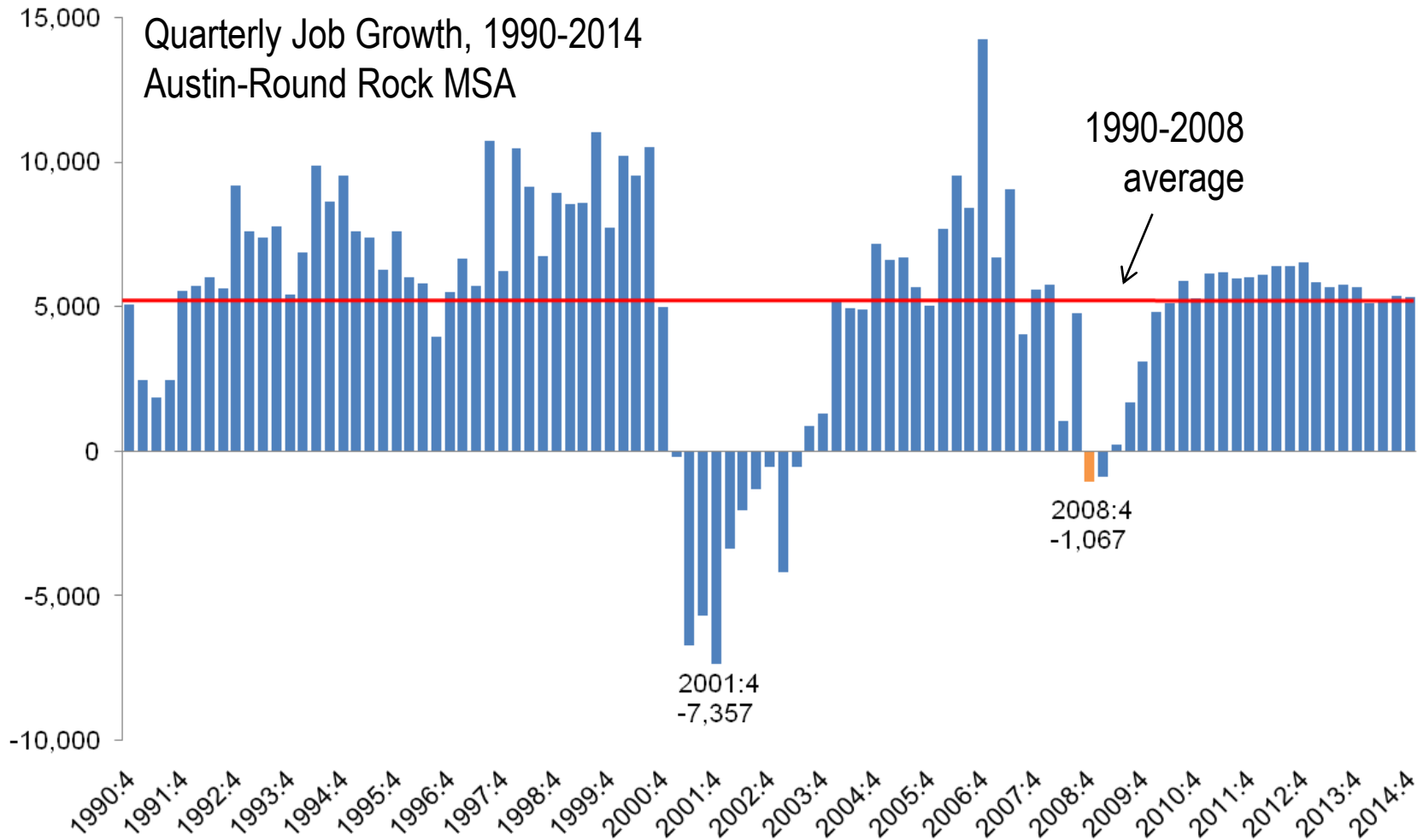


# 2009

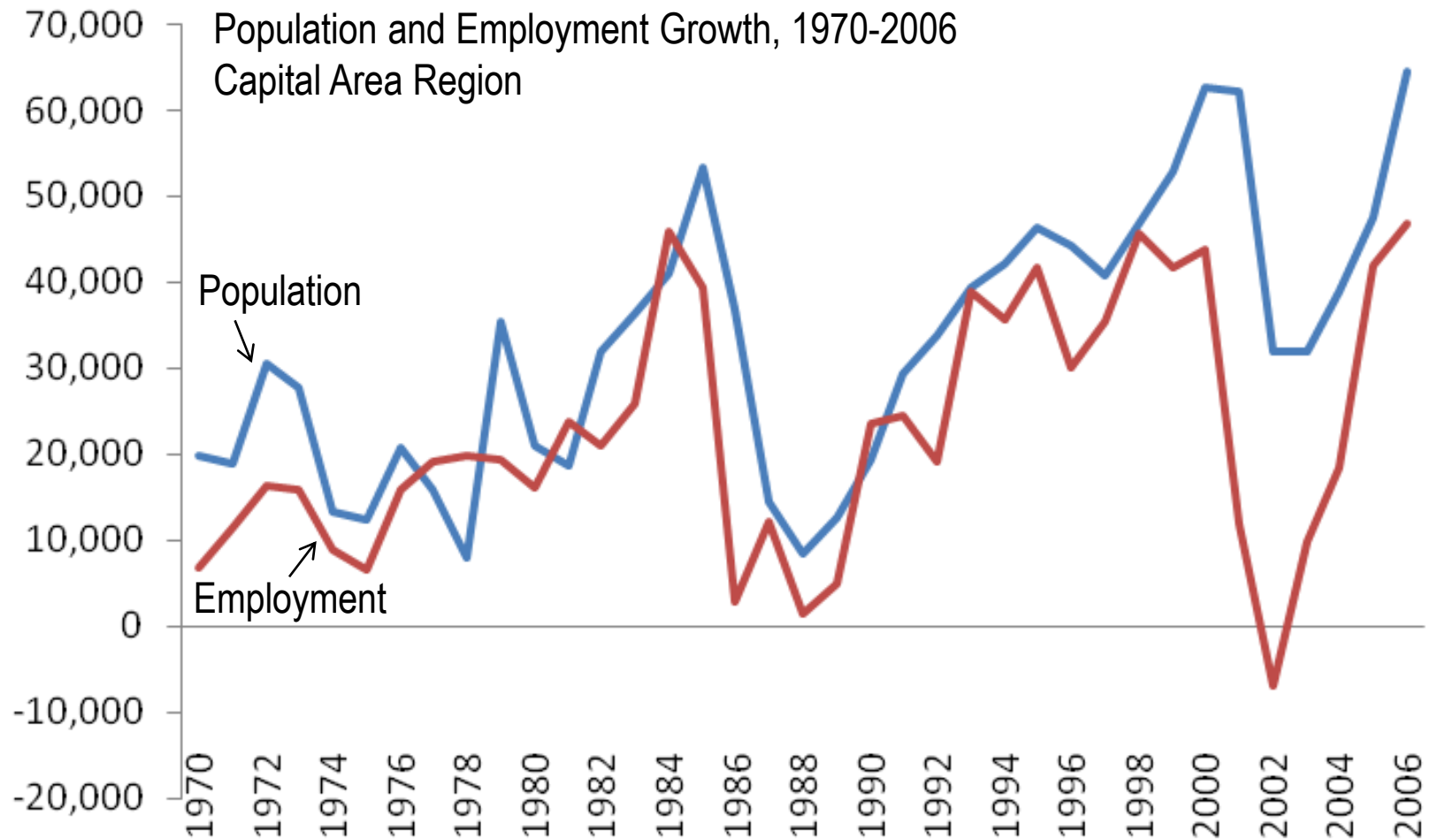


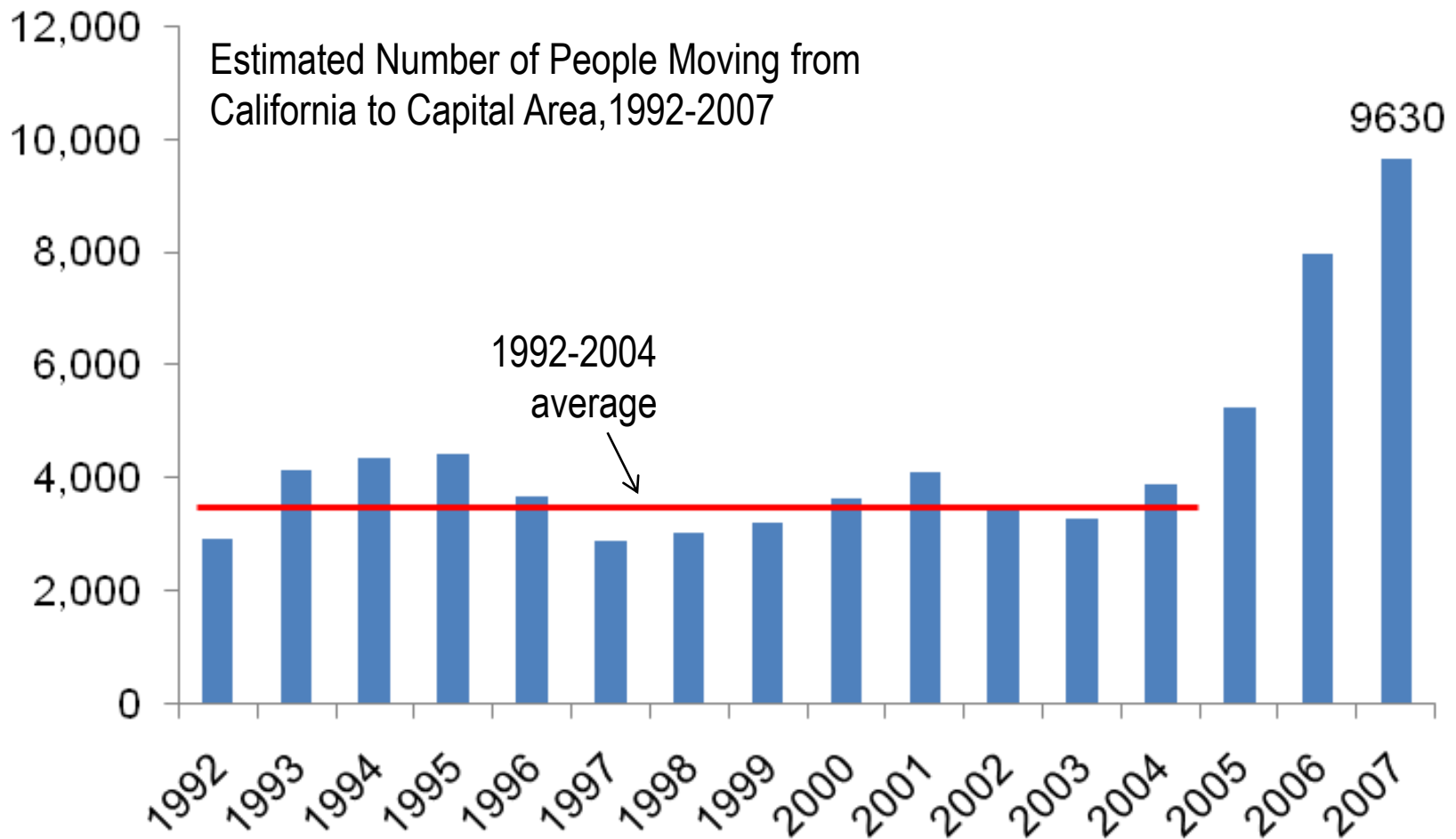
- Mild recession predicted
- Slower growth
- Fewer people moving here
- Declining affordability (?)

# CAPCOG 2008 State of the Region 2009

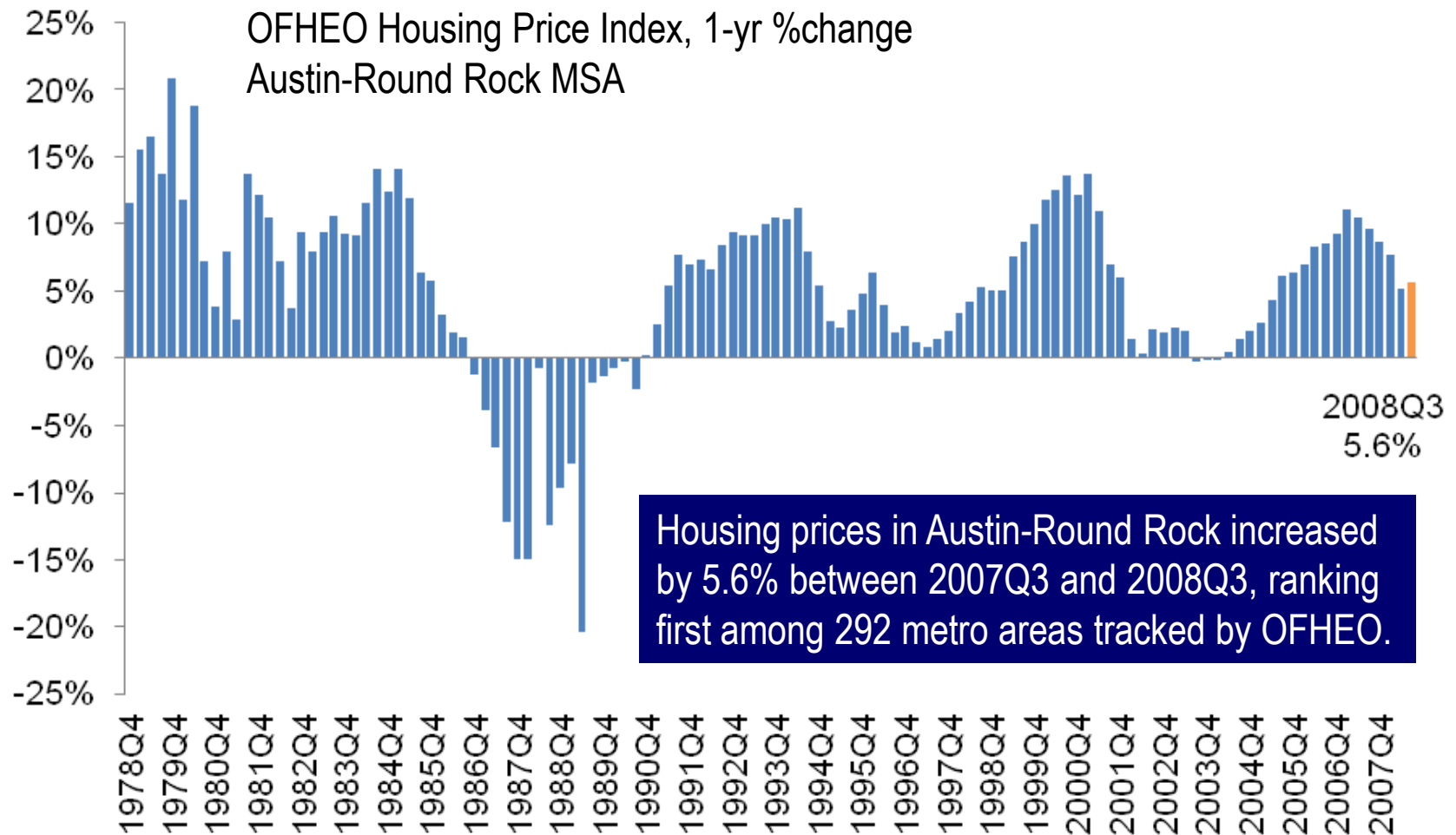


## CAPCOG 2008 State of the Region 2009



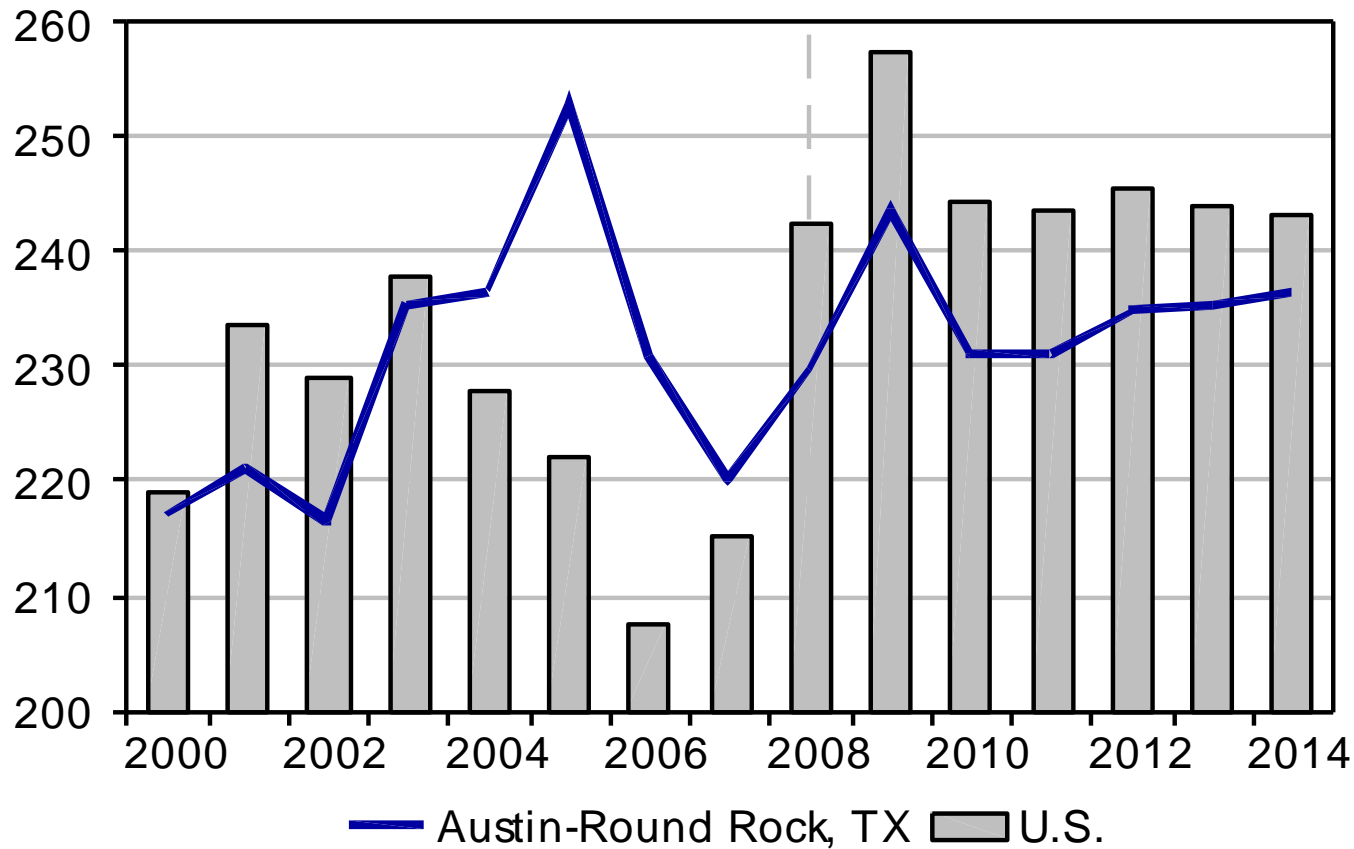






## Housing Affordability

(Higher index reading = more affordable)





# CAPCOG Strategies



- Economic development strategy update
- County land use/transportation planning
- Implications for air quality
- Expanded regional clearinghouse



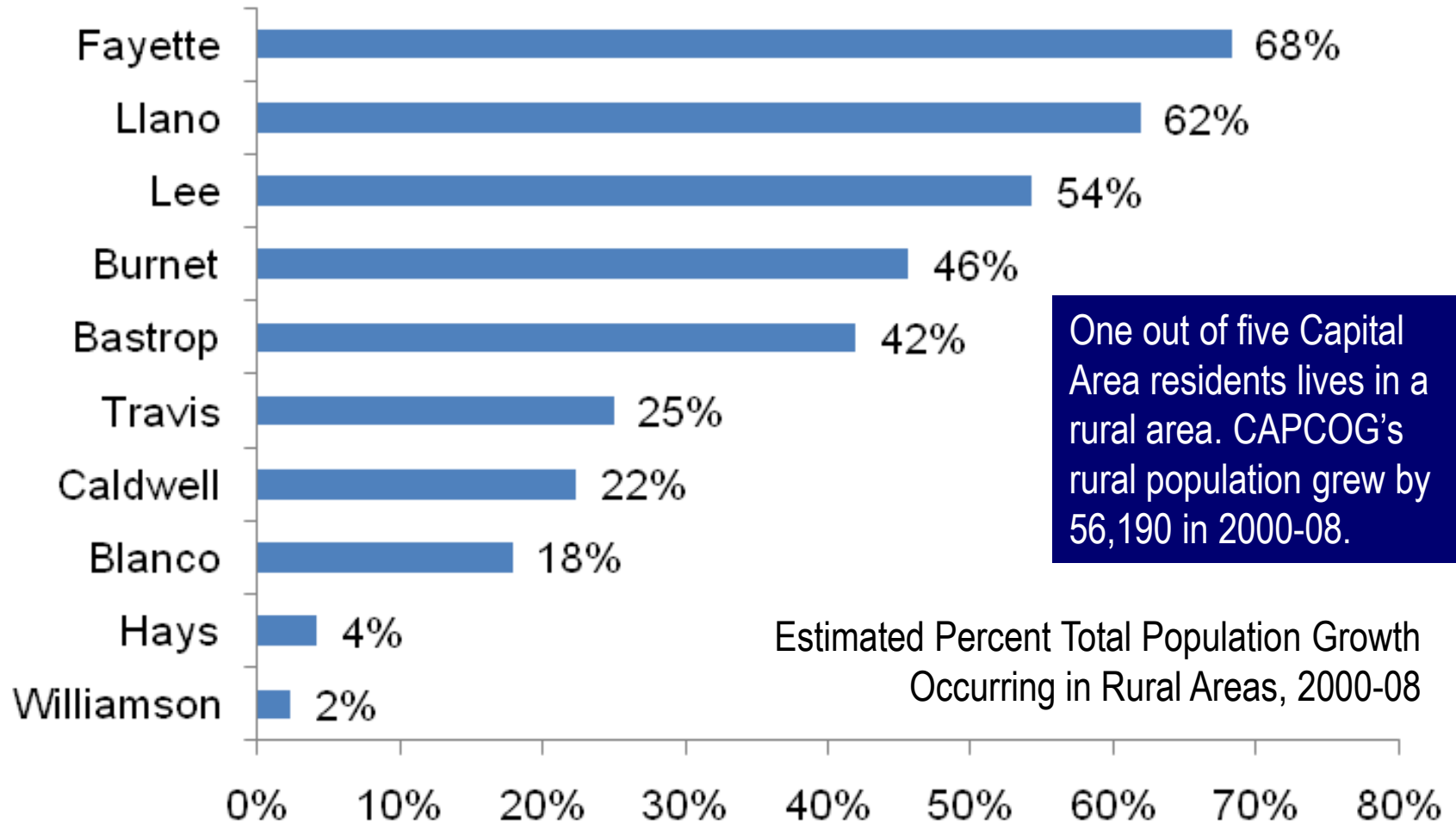
Capital Area grew from 1.3 million to 1.7 million residents between 2000 and 2008, an increase of 26 percent.

For every 100 residents added during 2000-08, 22 were in Austin and 11 were in Round Rock.

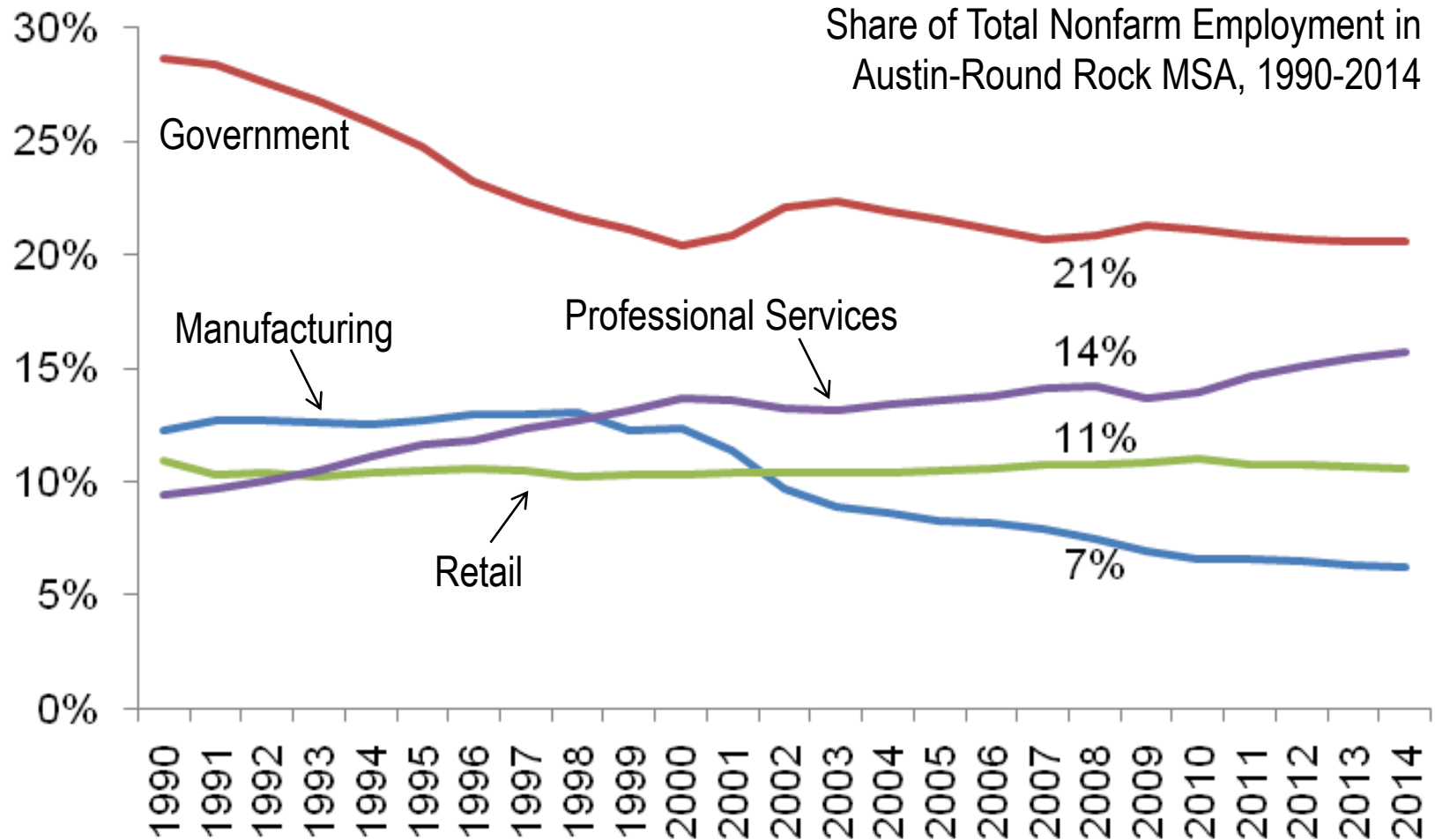
On average, 17 out of every 100 new residents were in unincorporated areas of the counties.

Austin	22	Other Cities	12
Round Rock	11	ETJ Areas	2
Cedar Park	8	<b>Unincorp.</b>	<b>17</b>
Kyle	5		
Georgetown	5		
San Marcos	5		
Pflugerville	5		
Leander	5		
Hutto	3		

## CAPCOG 2008 State of the Region CAPCOG Strategies

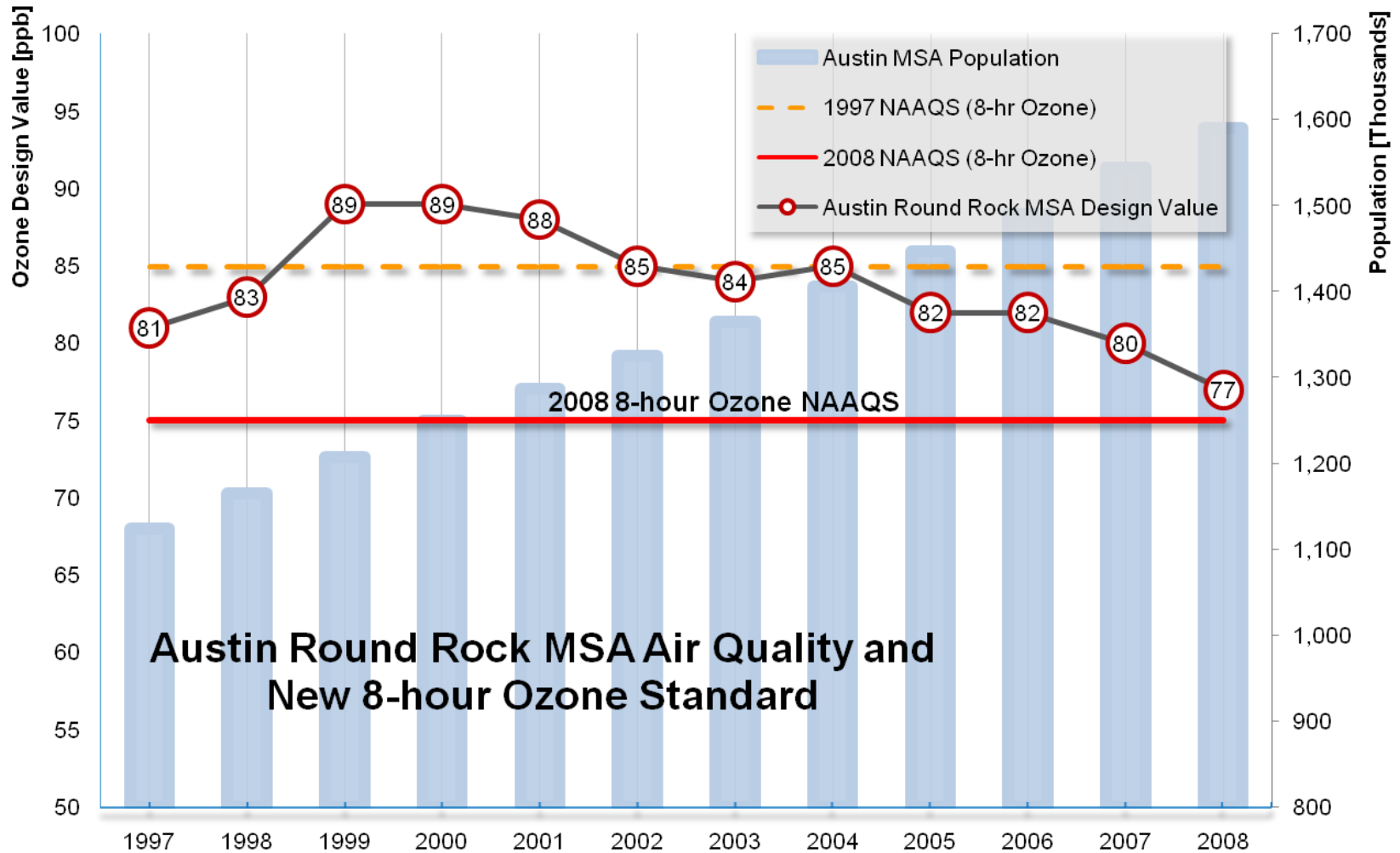


## CAPCOG 2008 State of the Region CAPCOG Strategies



# CAPCOG 2008 State of the Region

## CAPCOG Strategies







## CAPCOG Divisions

**Administration**

**Area Agency on Aging**

**Community & Economic  
Development**

**Regional Planning**

**Emergency Communications**

**Homeland Security**

**Regional Training Academy**

## About CAPCOG

## Quick Links

## Committees

## Calendar of Events

## Links

## Training

## Information Clearinghouse

## Contact Us

6800 Burleson Road  
Building 310, Suite 165  
Austin, TX 78744

[Map](#)

### Mail to:

PO Box 17848  
Austin, TX 78760

[Staff Directory](#)

**TEL:** (512) 916-6000

**FAX:** (512) 916-6001

[Betty Voights](#)

Executive Director

## CAPCOG Newsletter

Subscribe to our "CAPCOG  
Connections" Newsletter by

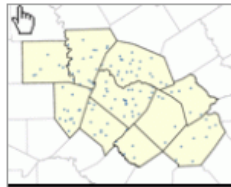
## Information Clearinghouse

### Geospatial Data

CAPCOG provides vector data (e.g. point, line, or polygon) as an ESRI geodatabase and an ESRI shapefile; and raster data (e.g. orthoimagery, digital elevation models, etc) as a MrSID file. **NEW FEATURE!** Now users with [Google Earth](#) can view CAPCOG's geospatial data by downloading KMZ files. Shapefiles and SID images may be viewed using free software such as ESRI's [ArcExplorer](#) (Version 2 for Windows) or LizardTech's [ExpressView](#) (SID images only). The data developed and/or distributed by CAPCOG is in a NAD 83, State Plane, Texas Central Zone, feet map projection and coordinate system. Refer to the metadata for information regarding a specific data layer. CAPCOG provides data to the general public under certain terms and conditions. Review our [Data License](#) for more information.

Our most requested datasets are available to the public at no charge. Simply right-click on the hyperlink for the data format of your choice and select "Save Target As...". CDs, DVDs, or prints of these datasets are available to the public at cost of reproduction plus labor and shipping. Please see our fee schedule for more information. To order a CD, DVD, or print, please contact CAPCOG Center for Regional Development at (512) 916-6000 or [Carolyn Defoore](#).

Select a Record... 



### Airfields

Airfield points of the CAPCOG region from US Bureau of Transportation Statistics. ([metadata](#))

[ESRI Geodatabase](#) (49 KB)

[ESRI Shapefile](#) (31 KB)

[Google KMZ File](#) (17 KB)

[Top of page](#)



### Airport Runways

Runway polygons for the major airports of the CAPCOG region. ([metadata](#))

[ESRI Geodatabase](#) (195 KB)

[ESRI Shapefile](#) (129 KB ZIP)

[Google KMZ File](#) (237 KB)

[Top of page](#)



### Bridges

Bridges connecting paved roadways for the CAPCOG region. ([metadata](#))

[ESRI Geodatabase](#) (250 KB)

[ESRI Shapefile](#) (111 KB ZIP)

[Google KMZ File](#) (138 KB)

[Top of page](#)



# Questions?

## Contact Information

Capital Area Council of Governments  
6800 Burleson Road  
Building 310, Suite 165  
Austin, TX 78744  
512.916.6000  
[www.capcog.org](http://www.capcog.org)

Betty Voights, Executive Director

Brian Kelsey, Director  
Community & Economic Development  
512-916-6183  
[bkelsey@capcog.org](mailto:bkelsey@capcog.org)

