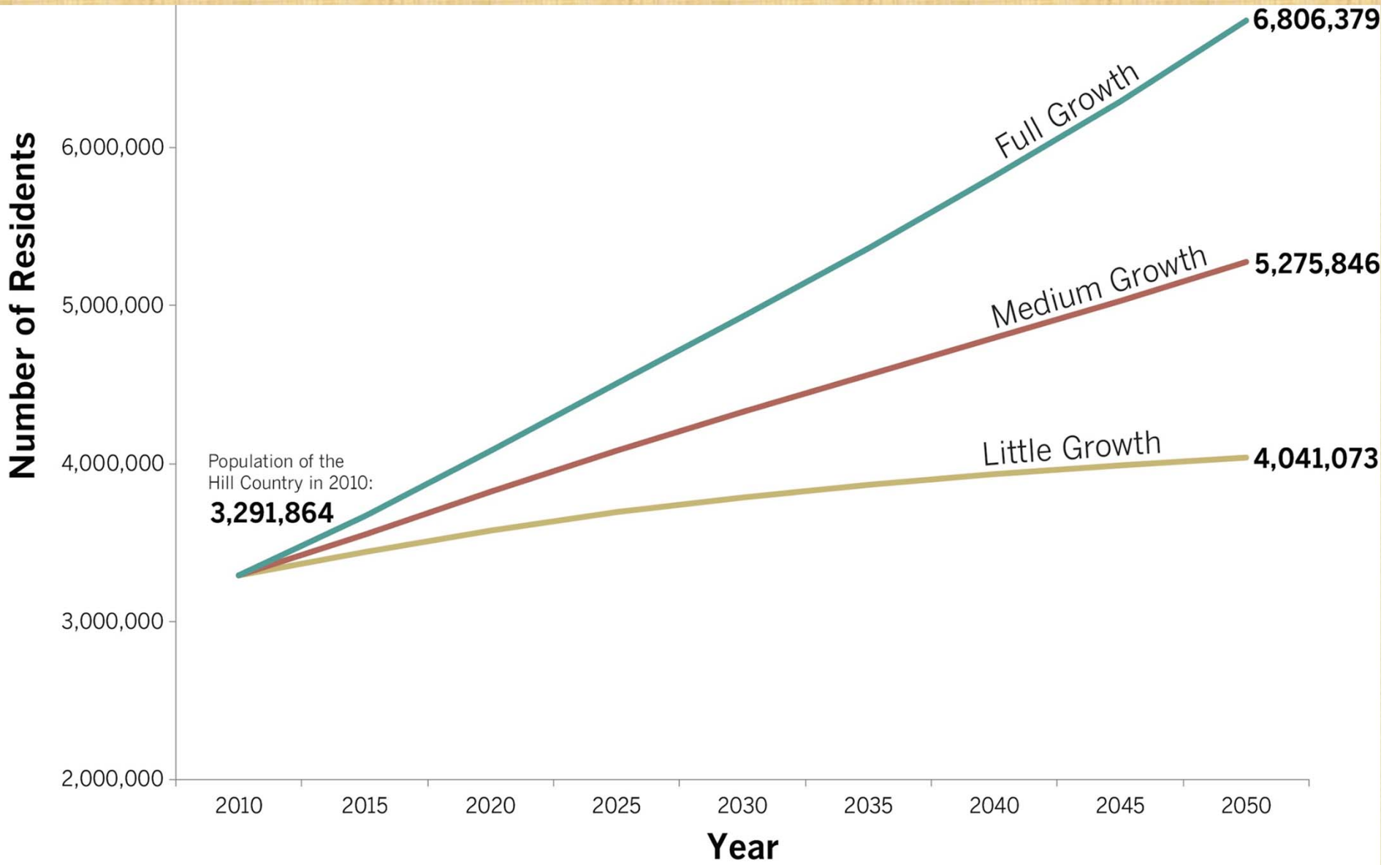




hill **country** **alliance**





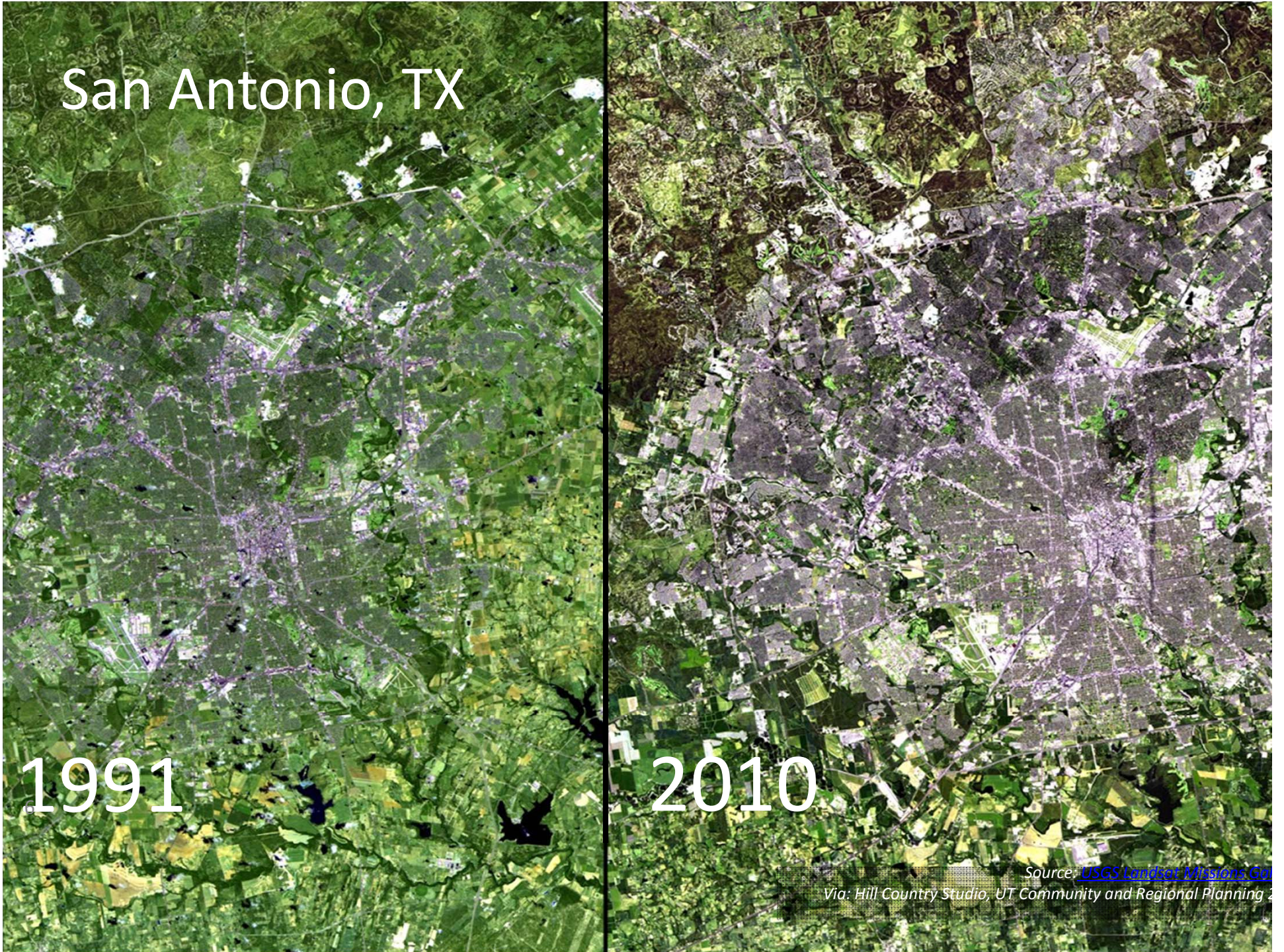
Source: Texas State Demographer, 2013
Via Hill Country Studio, UT Community and Regional Planning 2015

San Antonio, TX

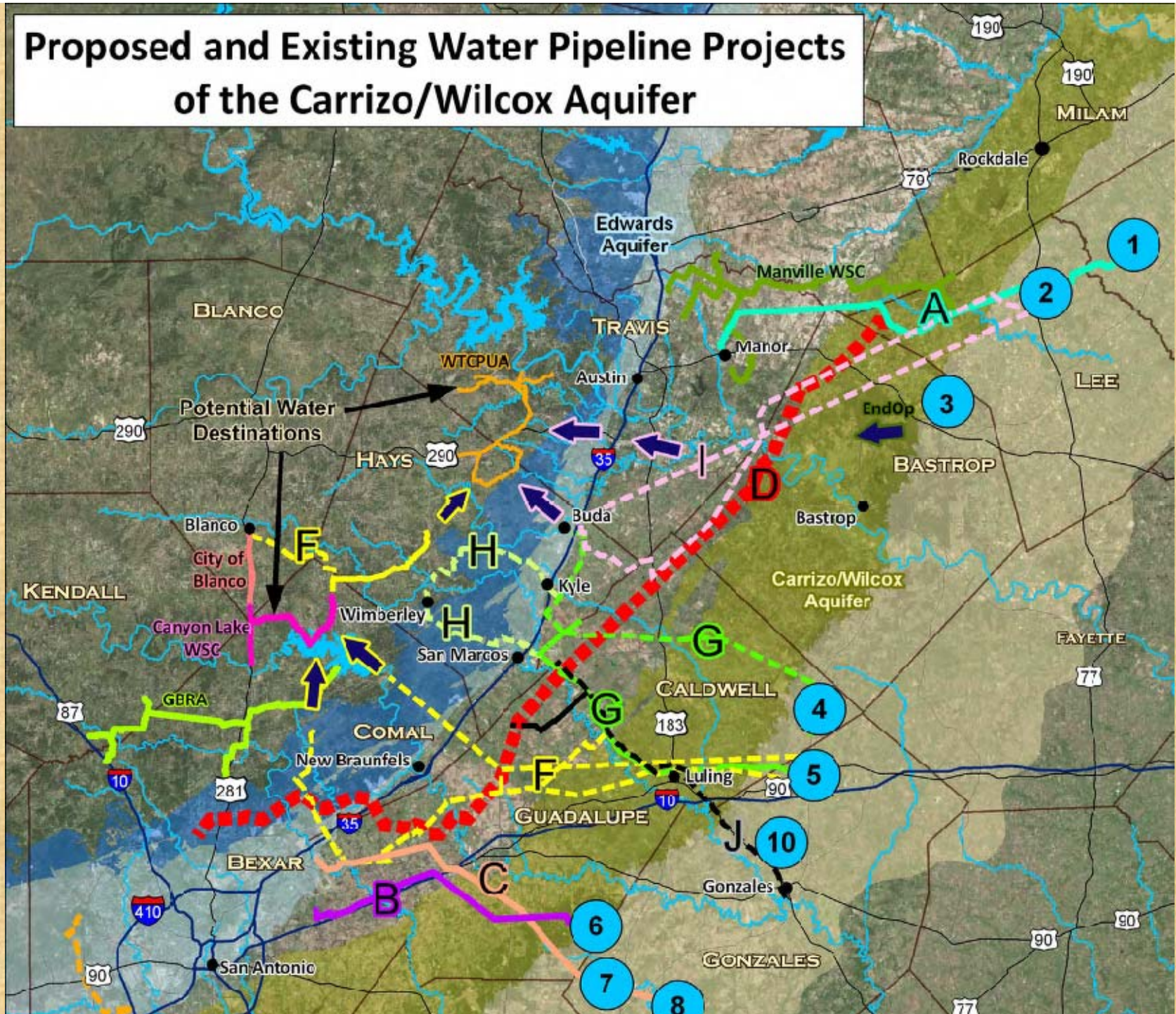
1991

2010

Source: [USGS Landsat Missions](#)
Via: Hill Country Studio, UT Community and Regional Planning



Proposed and Existing Water Pipeline Projects of the Carrizo/Wilcox Aquifer







Hays County 1997-2012

\$5,256

Market Value Change (\$/ac.)

318%

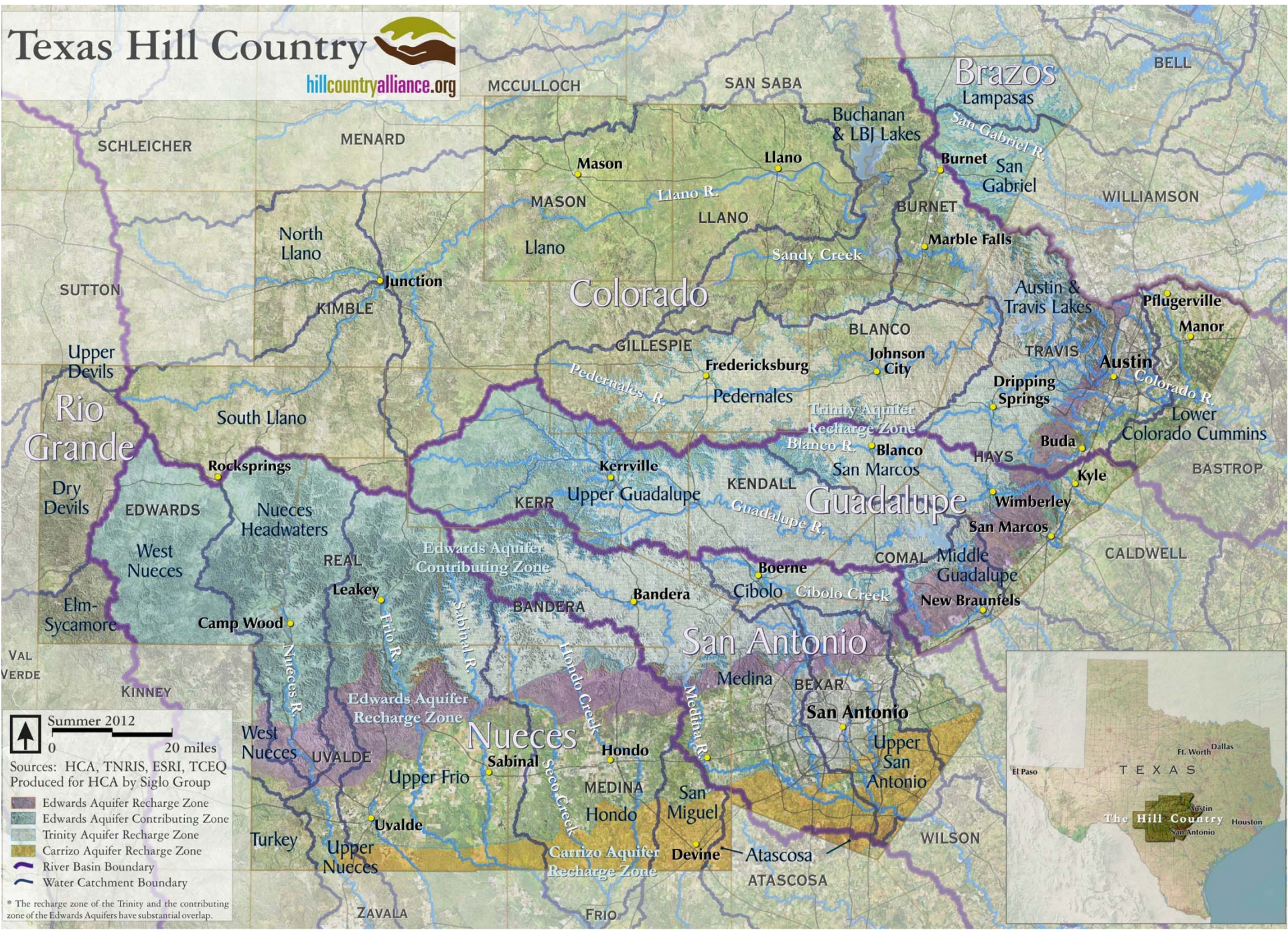
94,719

Population Change

112%

Texas Hill Country

hillcountryalliance.org



Summer 2012

0 20 miles

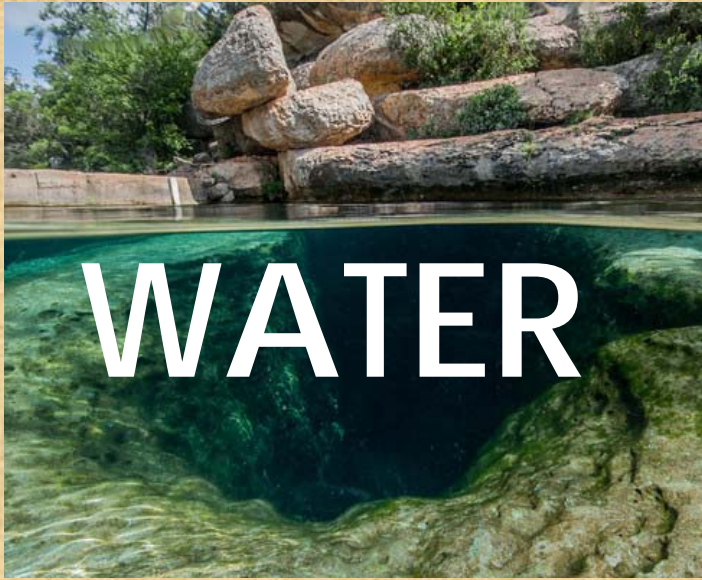
Sources: HCA, TNRIS, ESRI, TCEQ
Produced for HCA by Siglo Group

- Edwards Aquifer Recharge Zone
- Edwards Aquifer Contributing Zone
- Trinity Aquifer Recharge Zone
- Carrizo Aquifer Recharge Zone
- River Basin Boundary
- Water Catchment Boundary

* The recharge zone of the Trinity and the contributing zone of the Edwards Aquifers have substantial overlap.



PROGRAM AREAS



WATER



- Groundwater and Surface Water
- Rainwater Harvest
- Quality and quantity
- Demand and conservation

LAND



- Land Conservation
- Land Stewardship
- Healthy River Basins

COMMUNITY

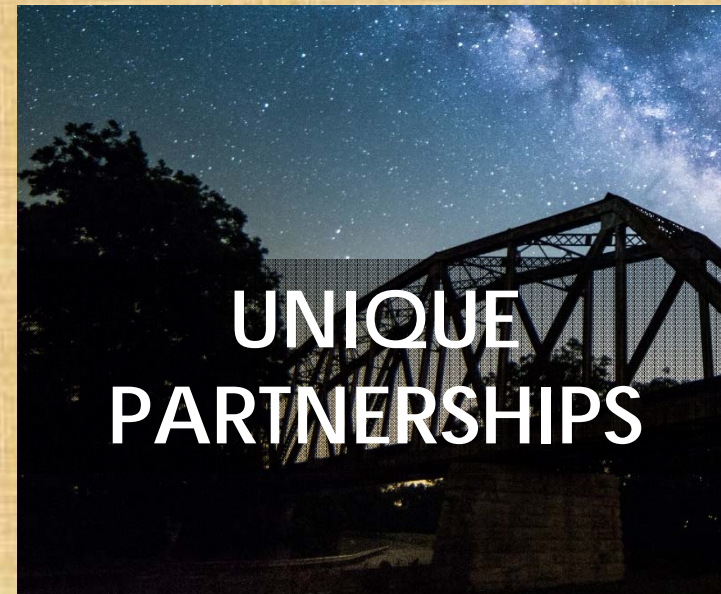


- Community of stakeholders and organizations
- Built Environment
- Rural and Urban economic vitality

SKY



STRATEGIES





Toward a Regional Plan for
the Texas Hill Country

*Dripping Springs
Photo by: Tom Zinn
Source: Camp Lucy*

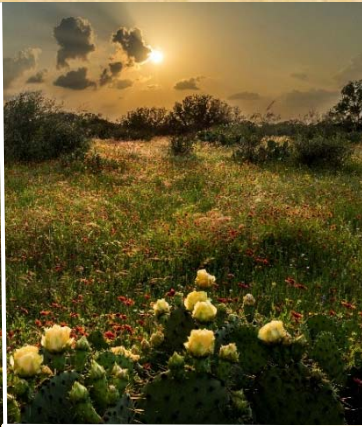


OUR HILL COUNTRY | COUNTS

Metrics in the Hill Country for Land, Water, Sky and Community

Project Goal

Develop a user-friendly tool to track various indicators for the health and well-being of the Texas Hill Country.





THE TEXAS HILL COUNTRY IS REVERED for its beauty, charm, history, star-filled night skies and spring-fed rivers. This website is a resource for tracking changes and the overall health of the region. Using research data, satellite imagery and mapping tools, many stories unfold. **Are we preserving it—or losing it?**

17 COUNTIES
3.4 MILLION PEOPLE
17K SQUARE MILES





THE EDGE OF NIGHT

THE TEXAS HILL COUNTRY IS STILL A PLACE where dark nights hold star-filled skies, where the Milky Way is clearly visible, where nocturnal patterns of plants and wildlife remain unchanged, and where we as humans can still look up in wonder and ponder our place in the solar system. **Can we keep it this way?**



Light Pollution

[LEARN MORE](#)



International Dark Sky Places

[LEARN MORE](#)

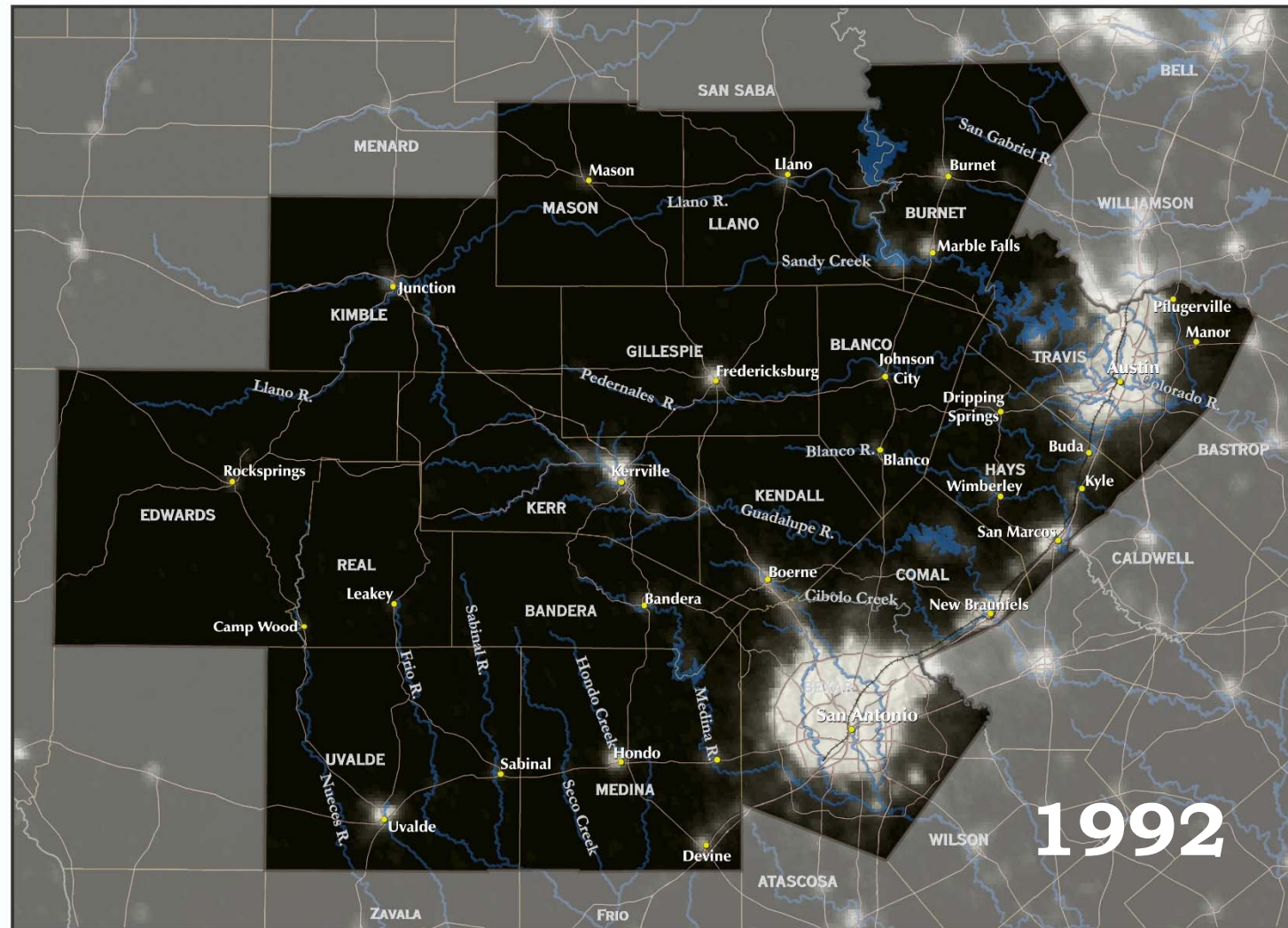


Taking Action

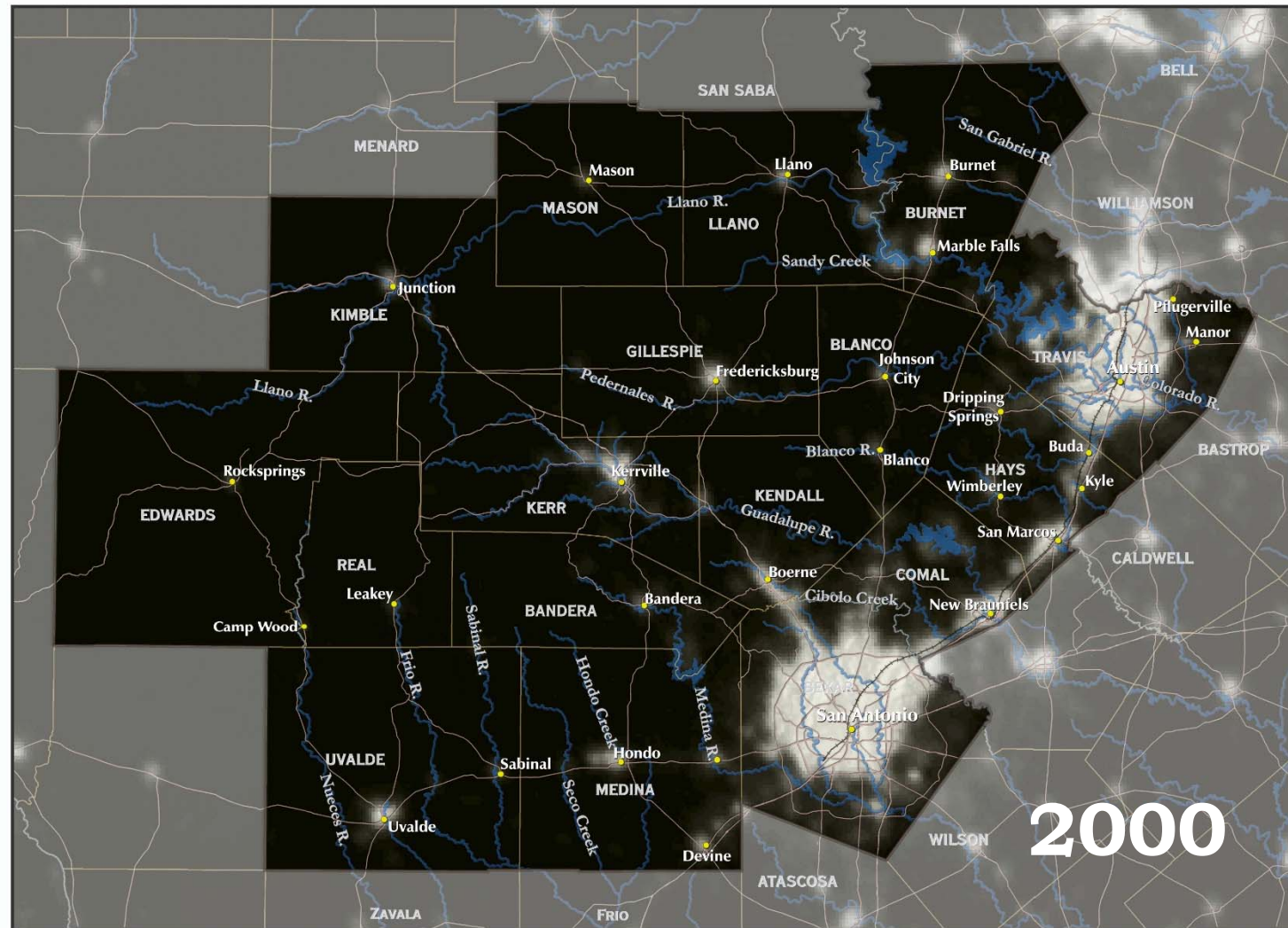
[LEARN MORE](#)



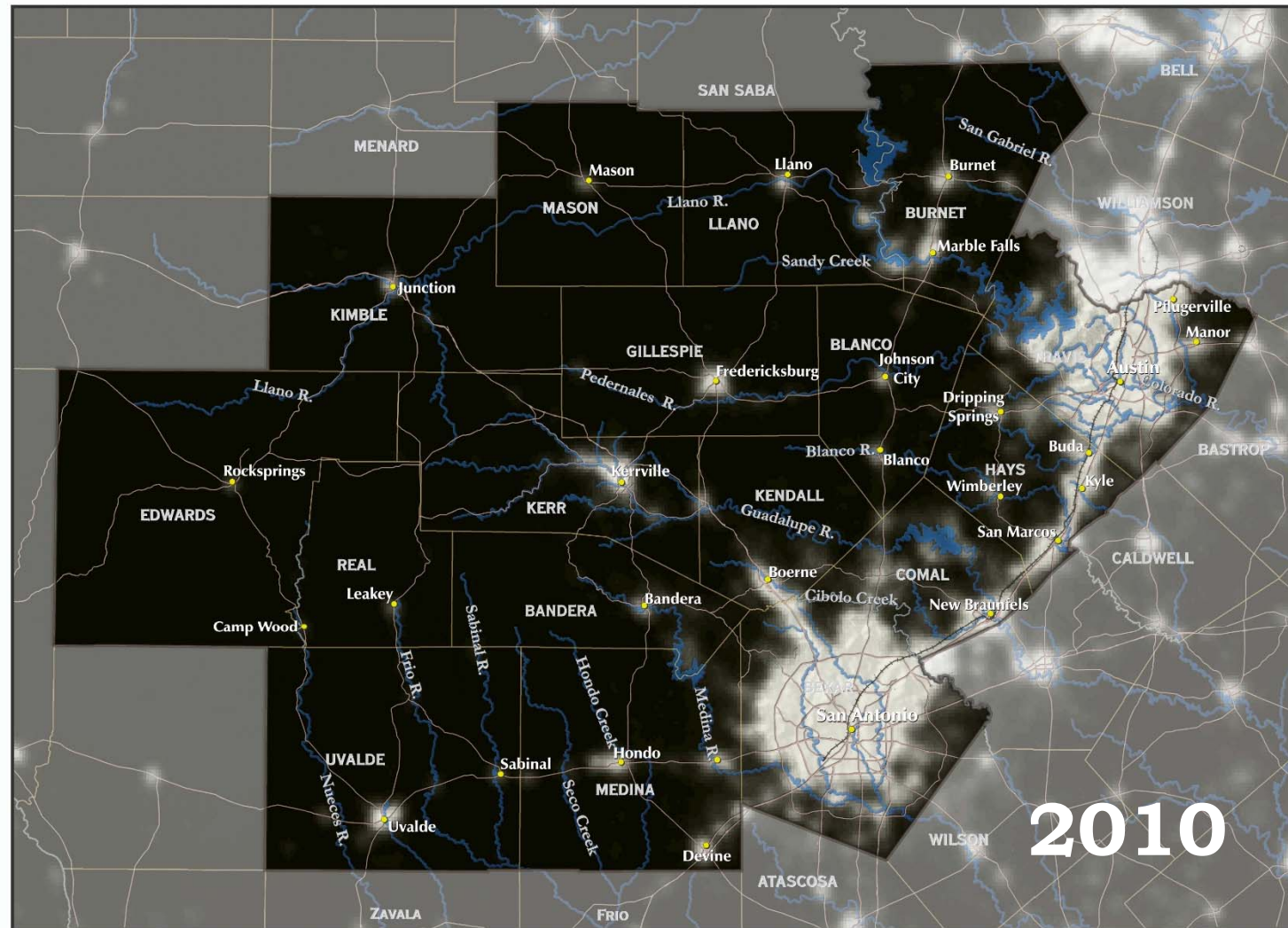
LIGHT POLLUTION PUSHES EDGE OF NIGHT FURTHER WEST.



LIGHT POLLUTION PUSHES EDGE OF NIGHT FURTHER WEST.



LIGHT POLLUTION PUSHES EDGE OF NIGHT FURTHER WEST.





HEALTHY LANDS MAKE HEALTHY WATERS

THE TEXAS HILL COUNTRY'S LANDSCAPE is changing in numerous ways and for many reasons—population growth, climate change, land fragmentation, and a lack of land management tools for local governments—to name but a few. All have potential for long-term impacts on water resources, wildlife habitat, and scenic beauty. How do we protect this region from detrimental change?



Conserved Lands

[LEARN MORE](#)



Industrial Activity

[LEARN MORE](#)

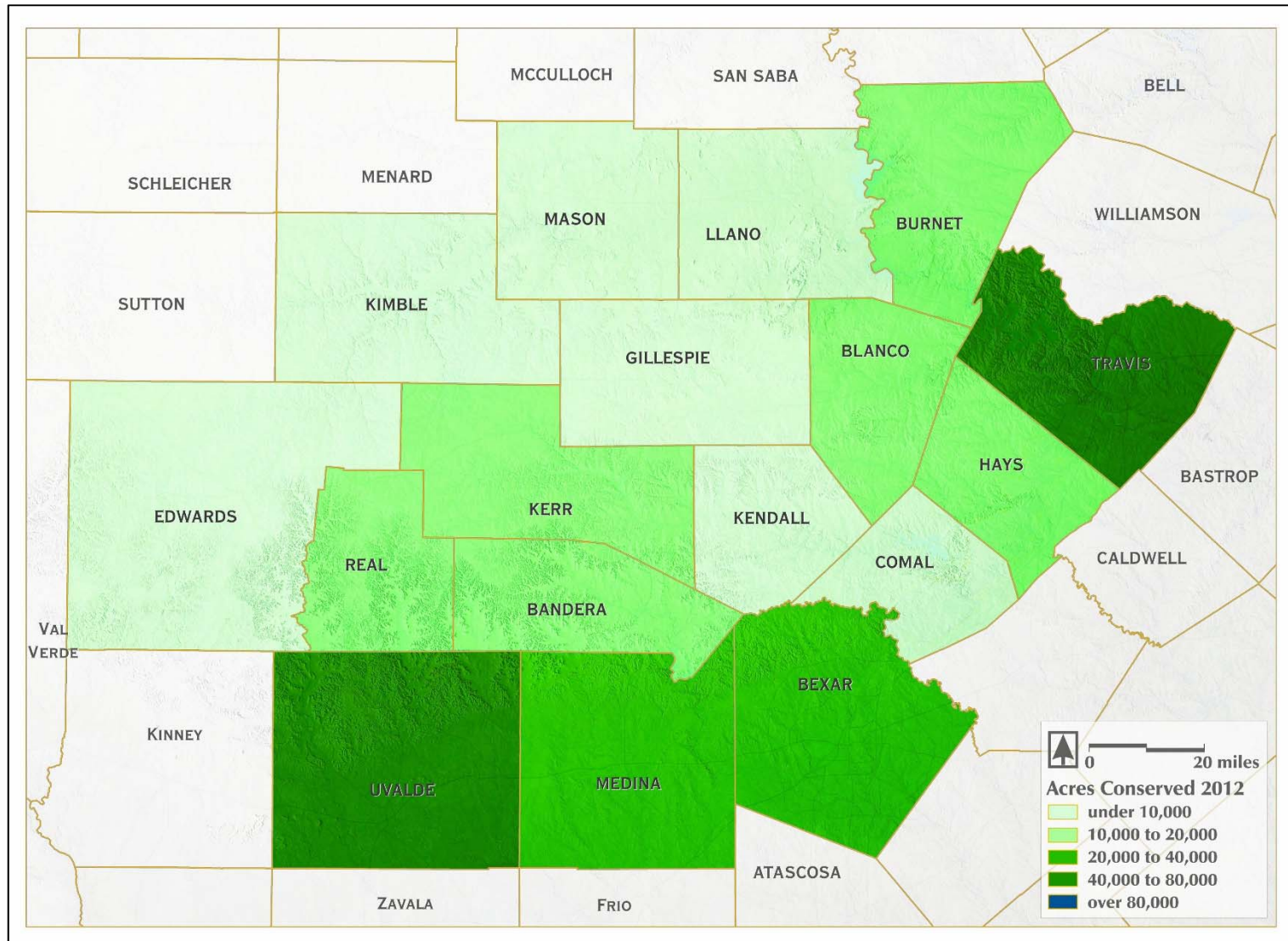


Urbanization

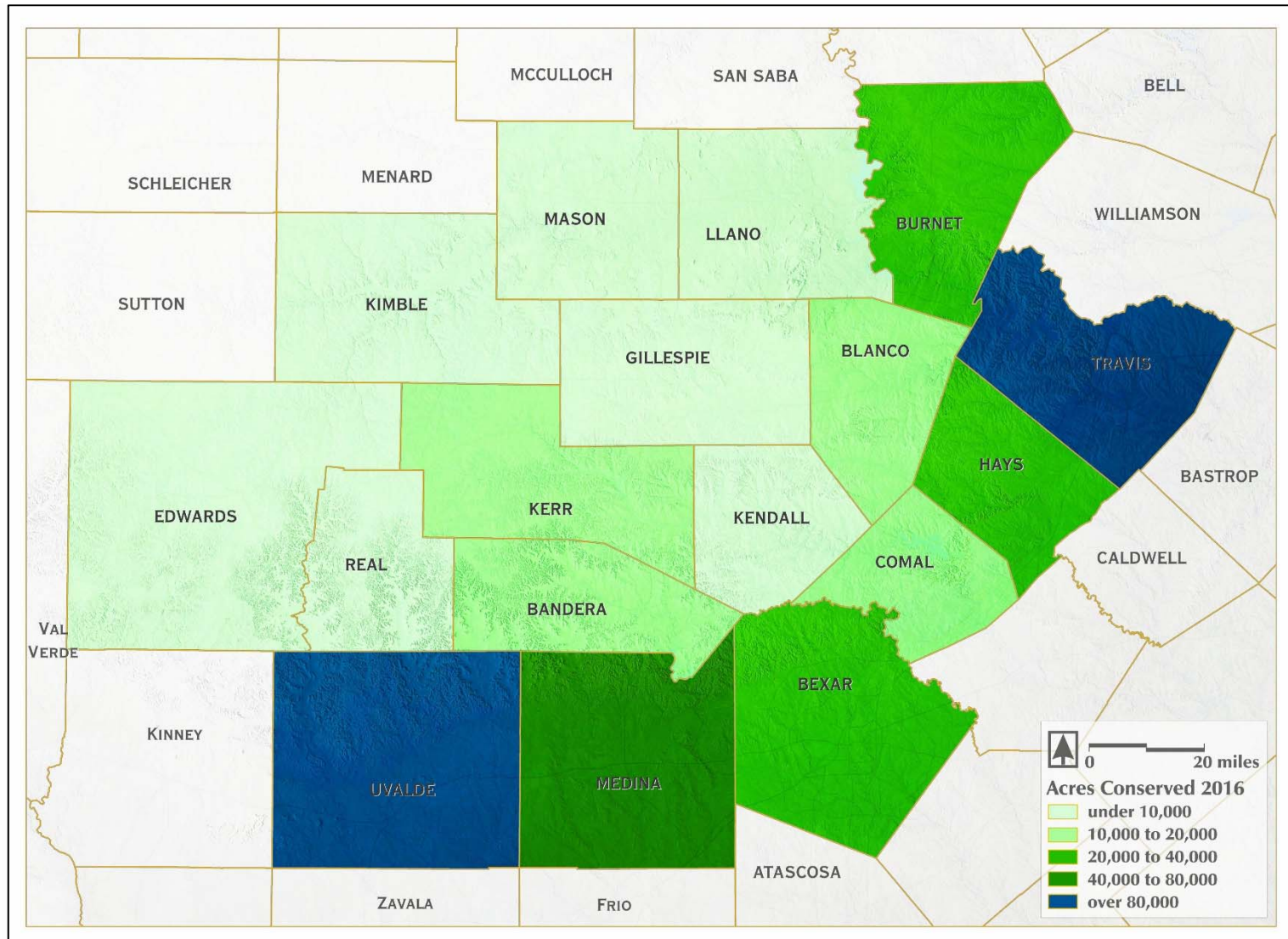
[LEARN MORE](#)



CONSERVED LANDS IN ACRES - 2012



CONSERVED LANDS IN ACRES - 2016



Thank you
for making our
Hill Country Count!





hill **country** **alliance**